



2021 New Products



**Designed
To Serve**

New Pro



**Designed
To Serve**

Melamine Dinnerware

Minski.....	9	Riverstone.....	23
Midtown.....	11	Pottery Market Glazed Dove Gray.....	25
Arctic Mill.....	15	Pottery Market Glazed Cream.....	27
Urban Mill.....	17	Pottery Market Glazed Brown.....	29
Rustic Mill.....	19	Pottery Market Matte.....	31
French Mill.....	21		

Cosmo Stardust.....	33
Nara.....	35
Milano Bento Box.....	37
Porcelain Dinnerware	
Corona Porcelain.....	39
Ramekins	41

Drinkware

Via Barware.....	43
Social Club Barware.....	45
To-Go Barware Flasks & Pouches.....	47
Reusable To-Go Tumblers.....	49
Jumbo Stemware.....	51
Tritan Stackable Mugs.....	53



Products

Trays	Risers	Point of Purchase	
Guest Dining Trays.....55	Mondrian Cubes.....65	Urban Renewal.....71	Eco Takeouts Black.....83
Display	Heights Risers.....66	High Chairs77	Eco Takeouts Bowls.....85
Breeze Baskets.....57	Chopstix Risers.....66	Booster Seats78	Eco Takeouts Pizza.....87
Harvest Baskets.....59	Cookware	Eco Friendly	Eco Takeouts Cup.....89
Catering & Buffet	Heiss Cookware.....67	Eco Takeouts Jade.....79	Eco Drop Bin.....91
Strata Buffetware.....61	Heiss Accessories.....69	Eco Takeouts Clear.....81	Evolution Plate Lid.....93

Tabletop Innovation

This has been a huge year for tabletop innovation and we are proud to say that we've been busy creating new concepts and collections that are sure to delight your guests.

We've expanded our most popular collections to include sizes for every conceivable application: from saucy little ramekins to big, decadent sharable platters.

Form, function, and fashion all come together in our new product assortment to produce tabletop collections that out perform, out last, and out shine anything previously available.

We have poured our hearts and minds into this craft of love, and we are thrilled to share it with the customers that we love.

This is our passion.
Our calling.
Our love.

And we are so fortunate to get to share it with you. Thank you for being our muse and our inspiration.

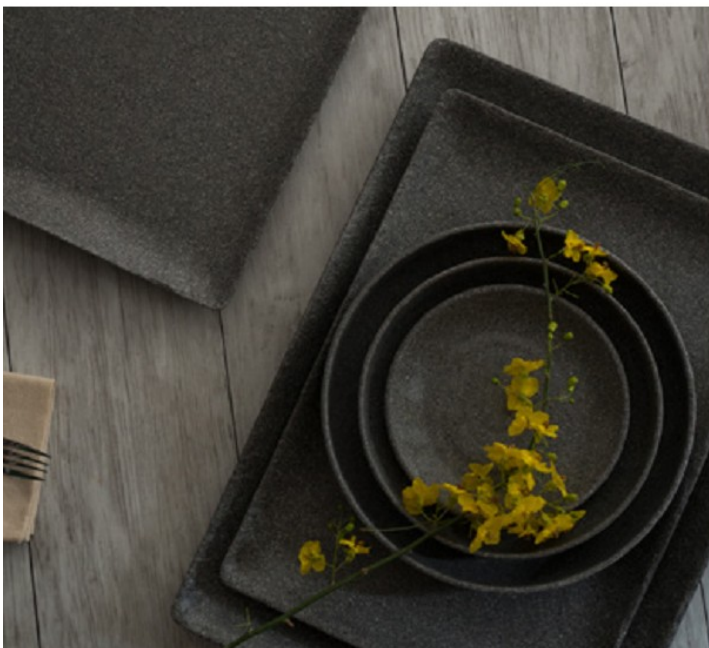
This is all for you.


chefforward

We are excited to announce a new addition to the G.E.T. product assortment! Chef Forward is now part of the G.E.T. portfolio.

Truly artisanal patterns, surface textures, and shapes all come together with G.E.T.'s tried and true supply chain, shipping, and logistics in order to bring operators' the latest and greatest in design and service.

www.chefforward.com



Form

Expanded collections have new shapes that swoop and contour to highlight culinary creations and impress guests.

Inspiring new surface textures ripple, shine, and dazzle to create a truly unique plating surface.



Function

G.E.T.'s most popular collections have been expanded to include a full suite of sizes and shapes: from the little details like ramekins and monkey dishes to dinner plates for fast casual restaurants and banquet halls, all the way to big shared appetizer platters and buffet displays. You can get the look without making any compromises.



Fashion

Plant the seeds of style with all-new innovative products on your tabletops. An abundance of options for building jaw-dropping presentations with on-trend tabletop pieces await you!

Choose from a variety of looks from dazzling whites to artisanal pottery in food-friendly colors.



Display, Buffet & Banqueting

Now more than ever, gatherings are precious: breaking bread, sharing company, being together.

We want to help make these moments special, and that means helping operators make it all come together.

We have banqueting displays that build up, break down, and transport easily. We have multi-use products that can help you serve breakfast in the morning and also serve hors-d'oeuvres in the evening.

Come find out why G.E.T. is truly designed to serve.

Strata

The only completely mobile, modular buffet system, Strata can expand, pack up, dress up, and roll out.

One unified system can roll in on a single cart and expand into over 16 feet of banqueting space. Soft-close hinges, butane burner safety features, and mix-and-match parts make this collection the Swiss Army knife of catering operations.



Innovative

Heiss induction-ready displayware is 1/3 the weight and 1/3 the cost of traditional cast iron.

Available sizes can accommodate small side dishes, single entree, family-style sharables, and even large displays. Heat, display, and serve all in one innovative package.



Interchangeable

Things change: menus, venues, guests. So why not have displayware that changes too?

Collections like Urban Renewal and Madison Avenue were designed with change in mind. Interchangeable pieces can be swapped, switched, and combined to accommodate different menus, event sizes, and venue styles.



Inviting

As the leader in fashion-forward displayware, we're constantly pushing the boundaries of style and function.

Collections like Moonstone and Granville have the trendy aesthetics of wood and stone with the convenience and food safety only available from melamine. So you can create the perfect inviting atmosphere to delight and entertain.



Reusable To-Go Containers

With the huge influx of meals to-go, you're using more disposable packaging than ever before. Many operators are seeking a better way, and they've found it with our Eco-Takeouts reusable container collection.

We've been busy innovating for Eco-Takeouts over the last year, and now you can accommodate nearly any menu item, including the only reusable single-slice pizza box and whole pizza box available anywhere, an expanded collection of bowls and the new Eco-Takeouts Luxury Black containers.

Eco-Takeouts®

Environmental responsibility is important, as is guest dining experience. What if you could improve both with one simple switch?

Eco-Takeouts provide a much improved dining experience over flimsy disposables and also help reduce landfill waste. Contact us and we'll even create a custom cost savings estimate for your first three years of ownership.



Save Green When You Go Green

Did you know a single Eco-Takeouts container replaces 1,000 disposable ones? It's true. Think of the money you'll save while also dramatically reducing landfill waste!



Reduce Waste with Upscale Taste

G.E.T.'s Eco-Takeouts come in a variety of colors and styles: from the classic green, to clear, to luxury black. We even have the ability to custom print with low minimum order quantities!



A Full Suite Solution

Change can be difficult. Luckily, we have a variety of implementation models that can help your operation start to use a sustainable model.

G.E.T. offers receptacle solutions, cost-savings models, and logistic models to help you start utilizing a sustainable and cost-saving service model.



Minski



Developed through a painstaking process, we perfected the intricate rim texturing chefs and guests have loved for years.

The design offers a porcelain-like glossy finish and an attractive plating area with a lovely edge that avoids sauce runoff. Heavyweight bodies carry enough heft to feel luxurious but still lighter weight than porcelain.

Minski's beautiful bright white aesthetic is the perfect match for nearly any menu and offers the flexibility to serve indoors or outdoors.



New Minski Mugs

- Made from break-resistant Tritan
- Microwavable
- Machine washable
- The perfect replacement for traditional fragile mugs



TM-8-MN-W
8 oz Tritan Mug
10.5 oz Rim Full, 4.4" dia.
3.3" H
2 dz.



TM-12-MN-W
12 oz Tritan Mug
15.5 oz Rim Full, 4.8" dia.
3.7" H
2 dz.



PT-12-MN-W
Plate
12.5"
1 dz.



PT-151-MN-W
Oval Plate
15" x 11"
6 ea.



PT-183-MN-W
Oval Platter
18" x 13"
3 ea.



B-3-MN-W
Ramekin
3 oz. 3" dia.
1.5" H
4 dz.



B-5-MN-W
Monkey Dish
5 oz. 3.5" dia.
1.75" H
2 dz.



B-14-MN-W
Soup/Cereal Bowl
16 oz. 5" dia.
2.25" H
1 dz.



B-64-MN-W
Serving Bowl
2 qt. 12.75" dia.
3.75" H
6 ea.



B-128-MN-W
Serving Bowl
4 qt. 16" dia.
4.75" H
6 ea.



B-192-MN-W
Serving Bowl
6 qt. 18" dia.
5.5" H
3 ea.



B-352-MN-W
Serving Bowl
11 qt. 22" dia.
7" H
3 ea.

See the full line here:

https://get-melamine.com/sites/default/files/minski_factsheet.pdf

Midtown

The NSF logo is a blue circle with the letters "NSF" in white.

Sleek, sophisticated and refined in true mid-century modern style, Midtown's complete collection of rectangle and square coupes add undeniable style to your tabletop. Put the spotlight on your culinary creations with this classic white surface paired with simple design.





CS-600-W
Square Plate
6"
2 dz.



CS-801-W
Square Plate
8"
2 dz.



CS-950-W
Square Plate
9.5"
1 dz.



CS-1101-W
Square Plate
11"
1 dz.



CS-1212-W
Square Plate
12"
1 dz.



CS-948-W
Rect. Platter
9.5" x 4.75"
1 dz.



CS-1411-W
Rect. Platter
14" x 11.5"
6 ea.



CS-1812-W
Rect. Platter
18" x 11"
3 ea.



CS-50-W
Square Monkey Dish
5 oz. 3.25" L
1.5" H
2 dz.



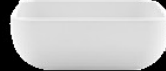
CS-120-W
Square Bowl
12 oz. 4.25" L
2" H
1 dz.



CS-320-W
Square Bowl
32 oz. 5.75" L
2" H
1 dz.



CS-960-W
Square Bowl
3 qt. 9.5" L
2.75" H
3 ea.



CS-1281-W
Square Bowl
4 qt. 10" L
3.25" H
3 ea.



CS-1920-W
Square Bowl
6 qt. 10.5" L
4.25" H
3 ea.



CS-4480-W
Square Bowl
14 qt. 14.5" L
4.75" H
3 ea.

See the full line here:

https://get-melamine.com/sites/default/files/midtown_factsheet.pdf



**Arctic Mill****Urban Mill****French Mill****Rustic Mill**

The Mill collection's four patterns offer guests a sense of place: from dazzling 21st century white to artful simplicity, and farmhouse charm to artisanal porcelain-like style, you have four beautiful options to craft the perfect plating.

These comprehensive collections are made with heavyweight construction and pure melamine, ensuring low replacement rates and a safe dining environment.



Arctic Mill

NSF

Arctic Mill sets the new standard for dazzling white melamine with a bright, lustrous white, coupe design and organic textures for 21st century plating.

A comprehensive collection, Arctic Mill provides everything you need for guest tabletop service from entrées to desserts.





CS-5-AM-W
Round Plate
5.5" dia.
4 dz.



CS-7-AM-W
Round Plate
7" dia.
1 dz.



CS-9-AM-W
Round Plate
9" dia.
1 dz.



CS-10-AM-W
Round Plate
10.5" dia.
1 dz.



SCS-6-AM-W
Square Plate
6"
2 dz.



SCS-9-AM-W
Square Plate
9.5"
1 dz.



CS-117-AM-W
Rectangular Platter
12" L x 7.5" W
1 dz.



SB-5-AM-W
Square Monkey Dish
5 oz. (5.5 oz. rim-full)
4.25" L x 1" H
4 dz.



SB-14-AM-W
Square Bowl
14 oz. (14.5 oz. rim-full)
6" L x 1.5" H
2 dz.



SB-48-AM-W
Square Bowl
1.5 qt. (1.6 qt. rim-full)
10.25" L x 1.75" H
1 dz.



B-3-AM-W
Round Ramekin
3 oz. (3.3 oz. rim-full)
3.25" dia. 1.6" H
6 dz.



B-5-AM-W
Round Monkey Dish
5 oz. (5.5 oz. rim-full)
4.25" dia. 1.5" H
6 dz.



B-8-AM-W
Round Bowl
8 oz. (12 oz. rim-full)
5" dia. 2" H
2 dz.



B-18-AM-W
Round Bowl
16 oz. (20 oz. rim-full)
7" dia. 1.75" H
1 dz.



B-43-AM-W
Round Bowl
28 oz. (30 oz. rim-full)
10.75" dia. 1" H
1 dz.



B-42-AM-W
Round Bowl
1.3 qt. (1.4 qt. rim-full)
10" dia. 1.75" H
1 dz.



B-792-AM-W
Cascading Bowl
24 oz. (1.3 qt. rim-full)
9.2" dia. 2.75" H (front) 4.75" (back)
1 dz.



B-22-AM-W
Round Bowl
22 oz. (24 oz. rim-full)
6.25" dia. 2.75" H
1 dz.

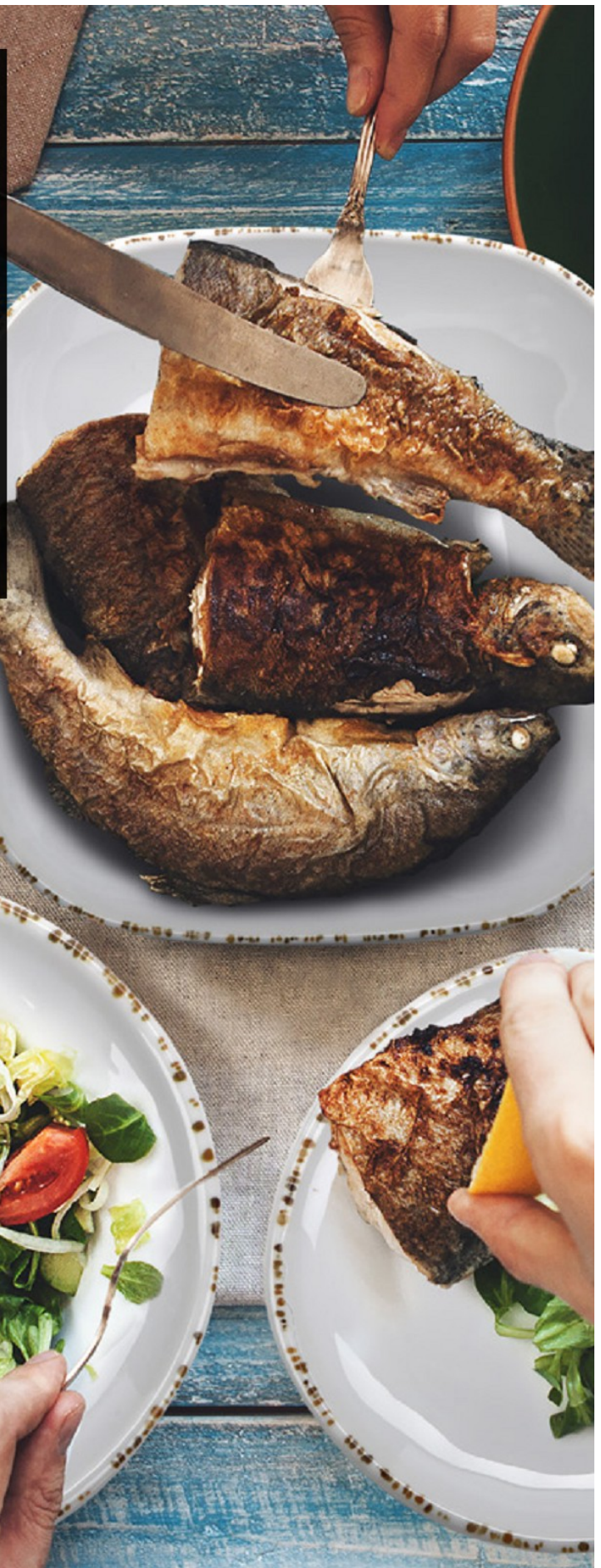
Urban Mill

The NSF logo is a blue circle with the letters "NSF" in white.

A beautiful cosmopolitan pattern with a cream plating area and a wink of bistro style, Urban Mill brings simplified sensibility to the table.

With the gorgeous sophistication chefs love, this collection points to thoughtful and artistic food sourcing, prepping and plating.

You benefit from an artisanal backdrop for your food plating, a comprehensive collection supporting both tabletop and banqueting service and the significant savings from reduced breakage.





CS-1511-UM
Oval Platter
15" L x 11" W
6 ea.



CS-1813-UM
Oval Platter
18" L x 13" W
3 ea.



B-3-UM
Round Ramekin
3 oz. 3.25" dia.
1.25" H
1 dz.



B-5-UM
Round Monkey Dish
5 oz. 4.5" dia.
1.25" H
6 dz.



B-66-UM
Round Bowl
2 qt. 9" dia.
4" H
6 ea.



B-792-UM
Cascading Bowl
24 oz. 9.25" dia.
2.75" H (front)
4.75" H (back)
1 dz.



B-130-UM
Round Bowl
4 qt. 11.25" dia. 5" H
3 ea.



B-193-UM
Round Bowl
6 qt. 13" dia. 5.5" H
3 ea.



B-353-UM
Round Bowl
11 qt. 18" dia. 4.5" H
3 ea.



SCS-6-UM
Square Plate
6"
2 dz.



SCS-9-UM
Square Plate
9.5"
1 dz.



CS-1576-UM
Display Tray
15" L x 7.5" W
12 ea.



CS-1814-UM
Rectangular Display Tray
18" L x 11" W
3 ea.



SB-14-UM
Square Bowl
14 oz. 6" L 1.5" H
2 dz.



SB-48-UM
Square Bowl
1.5 qt. 10.25" L 1.75" H
1 dz.



SB-80-UM
Square Bowl
2.5 qt. 10" L
2.5" H
6 ea.



SB-182-UM
Square Bowl
5.7 qt. 13" L
3.5" H
3 ea.



SB-410-UM
Square Bowl
12.8 qt. 16.75" L
4.5" H
3 ea.

See the full line here:

https://get-melamine.com/sites/default/files/urban_mill_factsheet_1.pdf

Rustic Mill

The NSF logo is a blue circle with the letters "NSF" in white.

Rustic Mill harvests the artful simplicity of farm-to-table aesthetics with the perfect country bistro style.

Organic textures, cream base with brown speckles and seemingly hand-painted brown rim offer ideal plating for a wide variety of menu items.

With this newly expanded collection, you can bring the farm-to-table look to your employee-served buffets and banquets, as well as your tabletop service.





See the full line here:

https://get-melamine.com/sites/default/files/rustic_mill_factsheet.pdf

French Mill

The NSF logo is a blue circle with the letters "NSF" in white.

A crackle pattern peaks through the cream base of French Mill's plating area like artisanal porcelain, transporting guests to a cozy bistro.

With organic surface textures and brown rim styling, you'll delight your guests with scratch-made farm-to-table offerings.

Only French Mill provides porcelain-like style but with premium weight melamine and now features all the tabletop pieces you need for great service!





CS-5-FM
Round Plate
5.5"
4 dz.



CS-7-FM
Round Plate
7"
1 dz.



CS-9-FM
Round Plate
9"
1 dz.



CS-1511-FM
Oval Platter
15" L x 11" W
6 ea.



CS-1813-FM
Oval Platter
18" L x 13" W
3 ea.



B-3-FM
Round Ramekin
3 oz., 3.25" dia., 1.25" H
6 dz.



B-5-FM
Round Monkey Dish
5 oz., 4.5" dia., 1.25" H
6 dz.



B-8-FM
Round Bowl
8 oz., 5" dia., 2" H
2 dz.



SCS-4-FM
Square Plate
4"
4 dz.



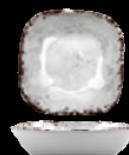
SCS-6-FM
Square Plate
6"
2 dz.



SCS-9-FM
Square Plate
9.5"
1 dz.



SB-5-FM
Square Monkey Dish
5 oz.
4.25" L x 1" H
4 dz.



SB-14-FM
Square Bowl
14 oz.
6" L x 1.5" H
2 dz.



SB-48-FM
Square Bowl
1.5 qt.
10.25" L x 1.75" H
1 dz.



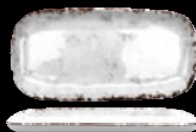
CS-119-FM
Rectangular Platter
12.75" L x 9.5" W
1 dz.



CS-146-FM
Rectangular Platter
14" L x 5.5" W
12 ea.



CS-1412-FM
Rectangular Platter
14" L x 11.5" W
6 ea.



CS-1576-FM
Rectangular Platter
15" L x 7.5" W
12 ea.



CS-1814-FM
Rectangular Platter
18" L x 11" W
3 ea.

See the full line here:

https://get-melamine.com/sites/default/files/french_mill_factsheet_.pdf

Riverstone

The NSF logo is a blue circle with the letters "NSF" in white.

Inspired by water-smoothed stones, only the Riverstone collection offers an artisanal style of organic stoneware in three colors.

The chef-approved clean plating surfaces spark presentation inspiration guests can't resist.

Durable, heavyweight melamine bodies outperform porcelain 3:1, creating a wealth of savings for operations.



White



B-401-W
Oval Ramekin
1.5 oz., 3.5" L x 3" W 1" H
4 dz.



B-500-W
Oval Ramekin
3 oz., 3.9" L x 3.4" W 1.4" H
2 dz.



B-1200-W
Oval Bowl
8 oz., 5.1" L x 4.4" W 2.1" H
2 dz.



B-2000-W
Oval Bowl
12 oz., 6.5" dia., 2.6" H
1 dz.



B-4500-W
Round Bowl
28 oz., 9.2" L x 8.7" W 2.4" H
1 dz.



CS-710-W
Round Plate
7"
1 dz.



CS-910-W
Round Plate
9.1"
1 dz.



CS-1050-W
Round Plate
10.6"
1 dz.



CS-1275-W
Oval Platter
12" L x 7.5" W
1 dz.

Dark Gray



B-401-DG
Oval Ramekin
1.5 oz., 3.5" L x 3" W 1.6" H
4 dz.



B-500-DG
Oval Ramekin
3 oz., 3.9" L x 3.4" W 1.6" H
2 dz.



B-1200-DG
Oval Bowl
8 oz., 5.1" L x 4.4" W 2.1" H
2 dz.



B-2000-DG
Oval Bowl
12 oz., 6.4" L x 5" W 2.6" H
1 dz.



B-4500-DG
Round Bowl
28 oz., 9.2" L x 8.7" W 2.4" H
1 dz.



CS-710-DG
Round Plate
7"
1 dz.



CS-910-DG
Round Plate
9.1"
1 dz.



CS-1050-DG
Round Plate
10.6"
1 dz.



CS-1275-DG
Oval Platter
12" L x 7.5" W
1 dz.

Light Gray



B-401-LG
Oval Ramekin
1.5 oz., 3.5" L x 3" W 1.6" H
4 dz.



B-500-LG
Oval Ramekin
3 oz., 3.9" L x 3.4" W 1.6" H
2 dz.



B-1200-LG
Oval Bowl
8 oz., 5.1" L x 4.4" W 2.1" H
2 dz.



B-2000-LG
Oval Bowl
12 oz., 6.4" L x 5" W 2.6" H
1 dz.



B-4500-LG
Round Bowl
28 oz., 9.2" L x 8.7" W 2.4" H
1 dz.



CS-710-LG
Round Plate
7"
1 dz.



CS-910-LG
Round Plate
9.1"
1 dz.



CS-1050-LG
Round Plate
10.6"
1 dz.



CS-1275-LG
Oval Platter
12" L x 7.5" W
1 dz.

Pottery Market Glazed Dove Gray

With true artisanal pottery style and just a touch of glaze for a smooth surface, Pottery Market Glazed naturally frames food as scratch-made.

This is the ideal collection for the artisanal food movement.

Available for the first time in on-trend Dove Gray, this new pattern provides undeniable style for a wide variety of menus and operations, from upscale to casual.





P-55-DVG
Round Plate
5.5"
4 dz.



P-75-DVG
Round Plate
7.5"
1 dz.



P-90-DVG
Round Plate
9"
1 dz.



P-83-DVG
Round Plate
8.3"
2 dz.



P-100-DVG
Round
Soup Plate
1 qt. 10" dia. 1.5" H
1 dz.



P-101-DVG
Round Plate
10.5"
1 dz.



B-35-DVG
Round Ramekin
2.5 oz. 3.5" dia., 1" H
4 dz.



B-55-DVG
Round Ramekin
4.5 oz. 4.5" dia., 1" H
4 dz.



B-81-DVG
Round Side Dish Bowl
8 oz. 5" dia., 2" H
2 dz.



B-299-DVG
Round Soup/Salad Bowl
10 oz. 5" dia., 2" H
2 dz.



B-300-DVG
Round Bowl
14 oz. 6.25" dia., 2.25" H
1 dz.



B-302-DVG
Round Salad Bowl
20 oz. 6.25" dia., 2.25" H
1 dz.



B-303-DVG
Round Salad Bowl
1 qt. 7" dia., 2.5" H
1 dz.



B-305-DVG
Round Entrée Bowl
1.5 qt., 8.25" dia., 2.75" H
1 dz.



P-129-DVG
Oval Platter
11.75" L x 9.25" W
1 dz.



P-151-DVG
Oval Platter
15" L x 11" W
6 ea.



P-183-DVG
Oval Platter
18" L x 13" W
3 ea.



B-310-DVG
Round Pasta/Salad Bowl
1.5 qt. 10" dia.
2.25" H
1 dz.



B-320-DVG
Round Display Bowl
4 qt. 12.25" dia.
3.25" H
3 ea.



B-330-DVG
Round Display Bowl
5.5 qt. 13.5" dia.
3.75" H
3 ea.



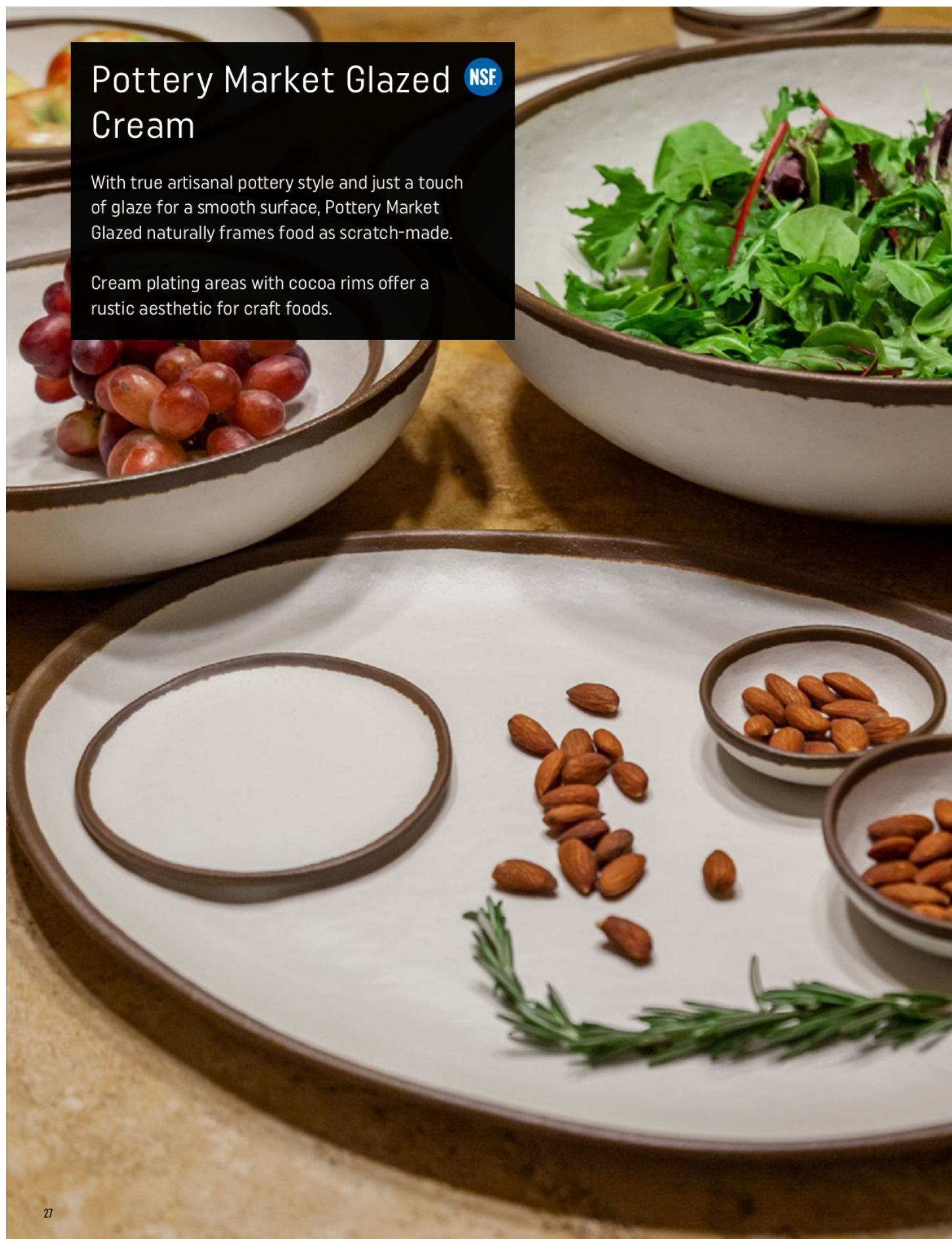
B-350-DVG
Round Display Bowl
10 qt. 16.5" dia.
4.5" H
3 ea.

Pottery Market Glazed Cream

NSF

With true artisanal pottery style and just a touch of glaze for a smooth surface, Pottery Market Glazed naturally frames food as scratch-made.

Cream plating areas with cocoa rims offer a rustic aesthetic for craft foods.





P-55-CRM
Round Plate
5.5"
4 dz.



P-75-CRM
Round Plate
7.5"
1 dz.



P-90-CRM
Round Plate
9"
1 dz.



P-83-CRM
Round Plate
8.3"
2 dz.



P-100-CRM
Round Soup Plate
1 qt. 10" dia. 1.5" H
1 dz.



P-101-CRM
Round Plate
10.5"
1 dz.



B-35-CRM
Round Ramekin
2.5 oz. 3.5" dia.
1" H
4 dz.



B-55-CRM
Round Ramekin
4.5 oz. 4.5" dia.
1" H
4 dz.



B-81-CRM
Round Side Dish Bowl
8 oz. 5" dia.
2" H
2 dz.



B-299-CRM
Round Soup/Salad Bowl
10 oz. 5" dia.
2" H
2 dz.



B-300-CRM
Round Bowl
14 oz. 6.25" dia.
2.25" H
1 dz.



B-302-CRM
Round Salad Bowl
20 oz. 6.25" dia.
2.25" H
1 dz.



B-303-CRM
Round Salad Bowl
1 qt. 7" dia.
2.5" H
1 dz.



B-305-CRM
Round Entrée Bowl
1.5 qt. 8.25" dia.
2.75" deep
1 dz.



P-129-CRM
Round Platter
11.75" L x 9.25" W
1 dz.



P-151-CRM
Round Platter
15" L x 11" W
6 ea.



P-183-CRM
Round Platter
18" L x 13" W
3 ea.



B-310-CRM
Pasta/Salad Bowl
1.5 qt. 10" dia.
2.25" H
1 dz.



B-320-CRM
Display Bowl
4 qt. 12.25" dia.
3.25" H
3 ea.



B-330-CRM
Display Bowl
5.5 qt. 13.5" dia.
3.75" H
3 ea.



B-350-CRM
Display Bowl
10 qt. 16.5" dia.
4.5" H
3 ea.

Pottery Market Glazed Brown

With true artisanal pottery style and just a touch of glaze for a smooth surface, Pottery Market Glazed naturally frames food as scratch-made.

The dark brown plating areas and beige rims create a striking counterbalance for bright and colorful creations like veggie-centric dishes, creamy sauces and Instagram-worthy desserts.





P-55-BR
Round Plate
5.5"
4 dz.



P-90-BR
Round Plate
9"
1 dz.



P-83-BR
Round Plate
8.3"
2 dz.



P-151-BR
Oval Platter
15" L x 11" W
6 ea.



P-183-BR
Oval Platter
18" L x 13" W
3 ea.



B-35-BR
Round Ramekin
2.5 oz. 3.5" dia.
1" H
4 dz.



B-55-BR
Round Ramekin
4.5 oz. 4.5" dia.
1" H
4 dz.



B-81-BR
Round Side Dish Bowl
8 oz. 5" dia.
2" H
2 dz.



B-299-BR
Round Soup/Salad Bowl
10 oz. 5" dia.
2" H
2 dz.



B-305-BR
Round Entrée Bowl
1.5 qt. 8.25" dia.
2.75" H
1 dz.



B-310-BR
Round Pasta/Salad Bowl
1.5 qt. 10" dia.
2.25" H
1 dz.



B-320-BR
Round Display Bowl
4 qt. 12.25" dia.
3.25" H
3 ea.



B-330-BR
Round Display Bowl
5.5 qt. 13.5" dia.
3.75" H
3 ea.



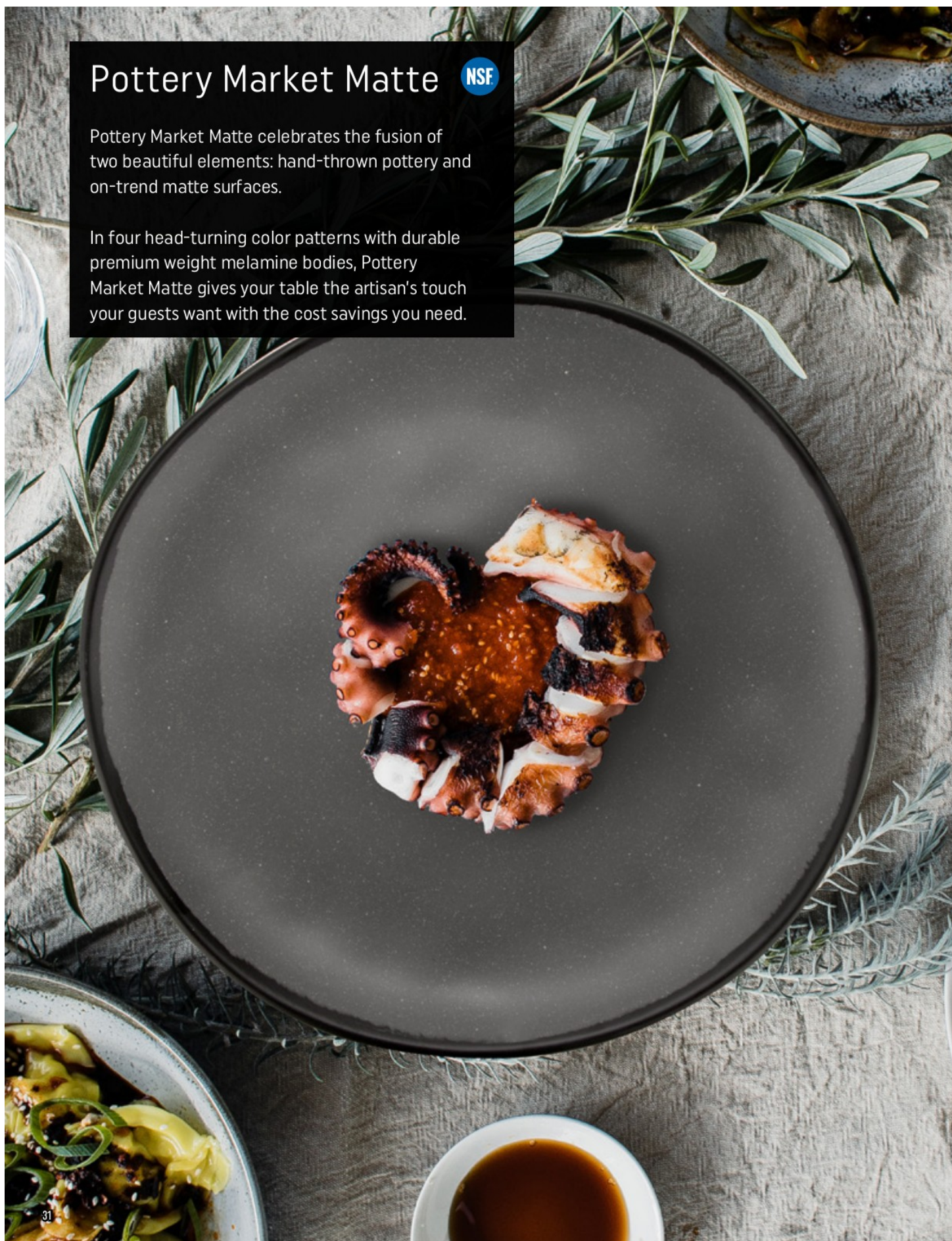
B-350-BR
Round Display Bowl
10 qt. 16.5" dia.
4.5" H
3 ea.

Pottery Market Matte

NSF

Pottery Market Matte celebrates the fusion of two beautiful elements: hand-thrown pottery and on-trend matte surfaces.

In four head-turning color patterns with durable premium weight melamine bodies, Pottery Market Matte gives your table the artisan's touch your guests want with the cost savings you need.





CS-70-MA
Round Bread Plate
7"
1 dz.

CS-90-MA
Round Dinner Plate
9"
1 dz.

CS-100-MA
Round Dinner Plate
10.5"
1 dz.

B-80-MA
Round
Side Dish Bowl
8 oz. 5" dia.
2" H
2 dz.

B-180-MA
Round
Salad Bowl
16 oz. 7" dia.
1.75" H
1 dz.

B-420-MA
Round
Pasta Bowl
1.3 qt. 10" dia.
1.75" H
1 dz.

CS-1170-MA
Rectangular Platter
12" L x 7.5" W
1 dz.



CS-70-TP
Round Bread Plate
7"
1 dz.

CS-90-TP
Round Dinner Plate
9"
1 dz.

CS-100-TP
Round Dinner Plate
10.5"
1 dz.

B-80-TP
Round
Side Dish Bowl
8 oz. 5" dia.
2" H
2 dz.

B-180-TP
Round
Salad Bowl
16 oz. 7" dia.
1.75" H
1 dz.

B-420-TP
Round
Pasta Bowl
1.3 qt. 10" dia.
1.75" H
1 dz.

CS-1170-TP
Rectangular Platter
12" L x 7.5" W
1 dz.



CS-70-GR
Round Bread Plate
7"
1 dz.

CS-90-GR
Round Dinner Plate
9"
1 dz.

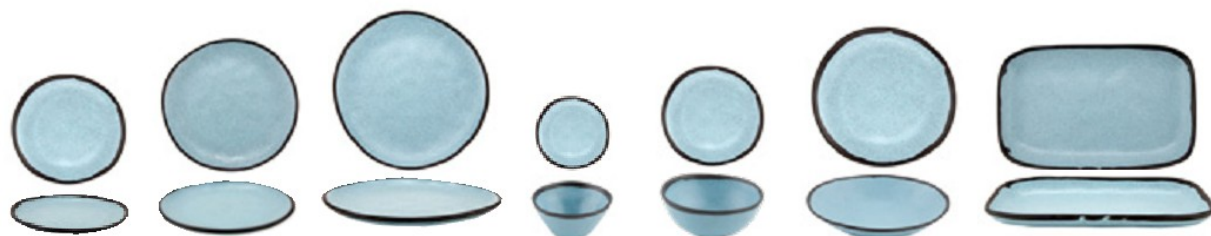
CS-100-GR
Round Dinner Plate
10.5"
1 dz.

B-80-GR
Round
Side Dish Bowl
8 oz. 5" dia.
2" H
2 dz.

B-180-GR
Round
Salad Bowl
16 oz. 7" dia.
1.75" H
1 dz.

B-420-GR
Round
Pasta Bowl
1.3 qt. 10" dia.
1.75" H
1 dz.

CS-1170-GR
Rectangular Platter
12" L x 7.5" W
1 dz.



CS-70-GBL
Round
Bread Plate
7"
1 dz.

CS-90-GBL
Round
Dinner Plate
9"
1 dz.

CS-100-GBL
Round Dinner Plate
10.5"
1 dz.

B-80-GBL
Round
Side Dish Bowl
8 oz. 5" dia.
2" H
2 dz.

B-180-GBL
Round
Salad Bowl
16 oz. 7" dia.
1.75" H
1 dz.

B-420-GBL
Round
Pasta Bowl
1.3 qt. 10" dia.
1.75" H
1 dz.

CS-1170-GBL
Rectangular Platter
12" L x 7.5" W
1 dz.

Cosmo Stardust: New to the Crew

NSF

The NEW Stardust color encapsulates the cosmos with its food-friendly silver-gray surface and celestial shimmer. Use all 15 pieces, including plates, bowls and a platter, to serve nearly anything. Pull a design thread through your plating or mix and match with the other two harmonizing colors.





Tabletop

Melamine Dinnerware

Porcelain Dinnerware

Specialty Metal Dinnerware

Baskets & Paper

Ramekins

Tabletop Accessories

Drinkware

See the full line here:

https://get-melamine.com/sites/default/files/cosmo_factsheet.pdf

Nara

NSF

Featuring a beautiful matte black finish textured with concentric circles, the Nara collection is masterly suited for all mainstream Asian menus. From Korean bibimbap to Japanese sushi and Thai curries to Vietnamese Banh Mi, Chinese Mapo Tofu and more, the possibilities are endless. Economically priced, Nara is best suited for operations with fewer than 500 daily covers.





P-500-BK
Square Plate
5"
4 dz.



P-600-BK
Square Plate
6"
2 dz.



BF-12-BK
Round Plate
12" dia.
1 dz.



SD-3800-BK
Round Ramekin
3 oz., 4" dia., 0.75" H
2 dz.



SD-4500-BK
Round Monkey Dish
5 oz., 4.5" dia., 0.75" H
2 dz.



B-70-BK
Round Bowl With Handle
7 oz., 4.5" dia.,
(5" dia. with handle), 1.5" H
2 dz.



B-501-BK
Square Bowl
6 oz., 4.8" L x 1.65" H
2 dz.



B-101-BK
Square Bowl
7 oz., 4.25" L x 2.1" H
2 dz.



B-601-BK
Square Bowl
12 oz., 5.75" L x 2" H
2 dz.



B-150-BK
Round Bowl
14 oz., 5" dia., 2.5" H
1 dz.



B-200-BK
Round Bowl w/ Lid
30 oz., 6.25" Dia.,
3" H (5" H w/ lid)
1 dz.



B-400-BK
Round Bowl w/ Lid
40 oz., 6.25" Dia.,
4.1" H (6" H w/ lid)
1 dz.



B-480-BK
Round Bowl w/ Lid
48 oz., 6.25" Dia.,
.5" H (6" H w/ lid)
1 dz.



B-95-BK
Round Bowl With Lid
8 oz., 4.1" dia., 3" H
1 dz.



SD-7600-BK
Three-Compartment
Sauce Dish
5.5 oz.,
7.75" L x 3.25" W x
0.75 H
2 dz.



RP-1865-BK
Rectangular Platter
18" L x 6.5" W
6 ea.



CHOPS96-BK
Glossy Black Chopsticks
9.5" L
100 sets/case

See the full line here:

https://get-melamine.com/sites/default/files/nara_factsheet_.pdf

Milano Bento Boxes

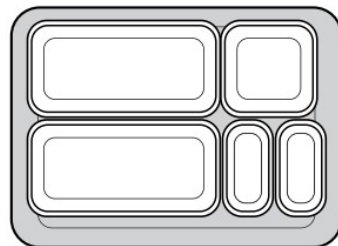
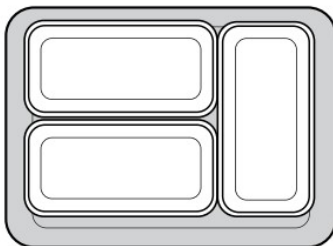
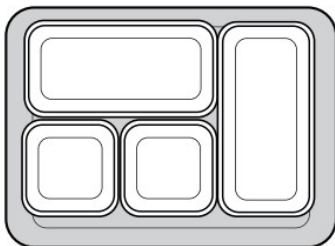
Keep the outdoor dining momentum going by thinking inside the box!

Stylish new bento boxes, built with pieces from the Milano collection, offer a contemporary stage to prepare and serve multi-course meals that can be covered during transport.

They're ideal for outdoor dining when food must be transported farther than kitchen-to-table, like cruise ship deck dining, poolside or beachfront cabana huts, rooftop bars, dining halls, restaurant patios and more.

These bento boxes feature smart design with a tray capable of holding multiple configurations of interior boxes, complete with a convenient lid that keeps food hot, clean and safe during transport.

Stackability makes serving even easier, allowing staff to transport 4-5 bento boxes at a time, enhancing speed of service for guests.





ML-86-W
Tray
7.6 qt 15.75" L x 12" W x 2.75" H
6 ea



LID-ML-86-W
Lid for ML-86-
16.25" L x 12.25" W
3 ea



ML-86-BK
Tray
7.6 qt
7.6 qt 15.75" L x 12" W x 2.75" H
6 ea



LID-ML-86-BK
Lid for ML-86-
16.25" L x 12.25" W
3 ea



ML-120-W
Entrée Tray
9.25" L x 9" W x 1.25" H
12 ea



ML-121-W
Tray
16 oz
9.25" L x 4.5" W x 1.25" H
12 ea



ML-121-BK
Tray
16 oz
9.25" L x 4.5" W x 1.25" H
12 ea



ML-122-BK
Side Dish
6 oz
4.5" L x 1.25" H
12 ea



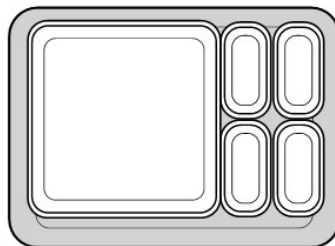
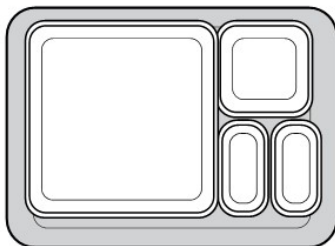
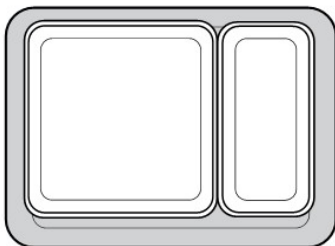
ML-122-W
Side Dish
6 oz
4.5" L x 1.25" H
12 ea



ML-123-BK
Side Dish
4 oz
3" L x 4.75" W x 1.25" H
12 ea



ML-123-W
Side Dish
4 oz
3" L x 4.75" W x 1.25" H
12 ea



NEW Actualite Porcelain

With seven new pieces added to the Actualite collection, you'll benefit from Corona's in-demand features like rolled edges, standard 5-year warranty on round pieces and stackability with bright white plating surfaces for their largest collection.



corona

Reasons to Love

- NEW pieces added to the Actualite collection, Corona's largest
- Economical and stylish option
- Plate cover is quiet during transport, unlike other metal options which are disruptive
- Plate covers stack 4 tall, enhancing speed of service and providing worry-free transport
- Silicone seal around base of plate cover creates snug fit on 11" round plates
- Colombia, South America, factory offers rapid US shipping
- Fully stocked and ready for immediate shipping and sampling

Quiet Plate Cover

Introducing a creative plastic plate cover that is very quiet during transport, features a snug fit and is designed to stack securely.

Unlike metal plate covers that clang and bang, this quiet option is the ideal piece for service during meetings and banquets, and at hospitals and senior living facilities where patients and residents may be resting.



CO-111-CL
Plastic Plate Cover
Fits 11" Plate
11.75" dia., 3" H
2 dz



4-Crown Plate Cover

Ridges on the Quiet Plate Cover fit and stack securely with all 4 of these Corona items



PA1101823312
Deep Coupe Plate
11"
1 dz



PA1101823612
Rimmed Soup Bowl
32 oz, 11.25" dia., 2" H
1 dz



PA1101902812
Rolled Edge Plate
11"
1 dz



PA1101712812
Coupe Plate
11"
1 dz



PA1101823112
Deep Coupe Plate/Bowl
9"
1 dz



PA1101823012
Soup/Cereal Bowl
15 oz
5.5" dia., 2.1" H
1 dz



PA1101825124
Stackable Bouillon Bowl
9 oz
3.7" dia., 2.3" H
2 dz



PA1101826324
Stackable Mug
9 oz
3.3" dia., 3.6" H
2 dz



PA1101826412
Stackable Mug
12 oz
3.3" dia., 4.4" H
1 dz

Actualite Banqueting Expanded by 7 Pieces
Visit www.getserveware.com/corona-porcelain to see all
Corona Porcelain items including new colors and collections



ramekins

The Unsung Icons of Stellar Sauce Service

See our complete selection of ramekins, sauce cups, monkey dishes and more and prepare to get saucy!

Nothing else serves the ketchup to your fries, the wasabi to your sushi, the syrup to your French toast with such swagger and style.

Ramekins and sauce cups are the perfect opportunity to add personality and style to your presentations.



Small Ramekins | 1 oz. – 2 oz.

Good sauce comes in small packages! Dazzle your guests with these little dippers.

SAN Plastic

- The Be-Your-Own-Sauce-Boss of ramekins: fluted, smooth, clear, opaque - the choice is yours
- Perfect for budget-conscious operations
- Dishwasher-safe
- BPA-free



SAN Smooth Ramekin
HG-015-CL
1.5 oz., 2.75" dia., 1.4" H
4 dz.



SAN Smooth Ramekin
HG-010-CL
1 oz., 2.4" dia., 1.1" H
4 dz.

Melamine

- The social butterfly of ramekins: versatile, vibrant and convivial, find melamine ramekins perfect for any gathering
- Ideal for high-volume, turn-and-burn operations
- Dishwasher-safe
- BPA-free



Melamine Smooth Ramekin
HG-020-IV/1
2 oz., 2.75" dia., 1.25" H
4 dz

See the full line here:

https://get-melamine.com/sites/default/files/Ramekins_brochure_v2.pdf

Via

Only G.E.T.'s Via barware collection provides operators with irresistible modern barware design fused with the strength and durability to withstand anything from turn-and-burn to sit-and-sip service.

With 10 hot, new pieces, including stemmed and stemless options, Via lets you pour, mix, shake and stir your way around nearly any bar menu from classic wine and beer to speakeasy-style mixed drinks.





Item	SW-2002-CL	SW-2001-CL	SW-2000-CL	SW-2009-CL
Description	14 oz Wine	16 oz Wine	18 oz Wine	18 oz Copa Gin
Rim-full	15.5 oz	19 oz	21 oz	22 oz
Max dia.	2.9"	3.25"	3.4"	3.63"
Height	8.85"	9"	9.1"	7.5"
Rack size	16 compart. w/ 4 extenders	16 compart. w/ 4 extenders	16 compart. w/ 4 extenders	16 compart. w/ 3 extenders
Case pack/cube	2 dz/0.06	2 dz/0.10	2 dz/0.11	2 dz/0.09
Weight	7.4 lbs	7.4 lbs	8.8 lbs	7 lbs
Material	Tritan	Tritan	Tritan	Tritan
BPA-free	Yes	Yes	Yes	Yes
Customization	Yes	Yes	Yes	Yes
Colors	CL	CL	CL	CL



Item	SW-2007-CL	SW-2008-CL	SW-2005-CL	SW-2006-CL	SW-2003-CL	SW-2004-CL
Description	28 oz Mixing Glass	40 oz Carafe	16 oz Pilsner	16 oz Pint	12 oz Short Tumbler	14 oz Tall Tum- bler
Rim-full	30 oz	48 oz	18 oz	18 oz	13 oz	15 oz
Max dia.	4"	3.13"	2.75"	2.9"	2.87"	2.63"
Height	6.5"	8.5"	8.38"	6.38"	4.38"	5.75"
Rack size	16 compart. w/ 3 extenders	25 compart. w/ 4 extenders	25 compart. w/ 4 extenders	25 compart. w/ 3 extenders	25 compart. w/ 1 extender	36 compart. w/ 2 extenders
Case pack/cube	2 dz/0.07	2 dz/0.09	2 dz/0.05	2 dz/0.04	2 dz/0.03	2 dz/0.03
Weight	8.4 lbs	8.4 lbs	8.4 lbs	7.2 lbs	5.6 lbs	6 lbs
Material	Tritan	Tritan	Tritan	Tritan	Tritan	Tritan
BPA-free	Yes	Yes	Yes	Yes	Yes	Yes
Customization	Yes	Yes	Yes	Yes	Yes	Yes
Colors	CL	CL	CL	CL	CL	CL

See the full line here:

https://get-melamine.com/sites/default/files/via_factsheet.pdf

Social Club

The speakeasy spirit roars to life with Social Club barware.

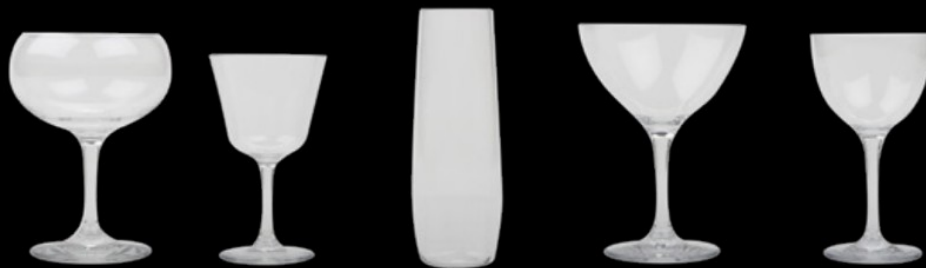
Flaunting flared edges and neat coupes, stemmed and stemless pieces, only Social Club offers vintage 20s-style barware refined enough for Jay Gatsby yet durable enough for his large parties.

Made 100% from Tritan, your benefits extend beyond durability to unrivaled clarity and scratch resistance.

New to the market are four pieces previously unavailable in Tritan food-safe plastic, which opens the door to more creative bar service: the Nick and Nora, the coupe cocktail, the stemless champagne and the 3.5 oz cocktail glass.

Showcase your colorful craft cocktails in shatterproof Social Club pieces and ignite a sense of refined mystery with a tantalizing flair for your guests.





Item	SW-2013-CL	SW-2016-CL	SW-2011-CL	SW-2014-CL	SW-2015-CL
Description	8 oz Coupe Cocktail	3.5 oz Cocktail	7 oz Stemless Champagne	6 oz Martini/Cocktail	4 oz Nick & Nora Cocktail
Rim-full	9.5 oz	5 oz	7.5 oz	9 oz	6 oz
Max. dia	3.13"	2.82"	1.85"	3.96"	2.99"
Height	5.19"	5"	5.68"	5.45"	5.6"
Rack Size	16 compart. w/ 2 extenders	25 compart. w/ 2 extenders	25 compart. w/ 2 extenders	16 compart. w/ 2 extenders	25 compart. w/ 2 extenders
Case pack/cube	2 dz/1.33	2 dz/0.69	2 dz/0.56	2 dz/1.2	2 dz/0.78
Weight	4.08 lbs	3.98 lbs	3.12 lbs	5.74 lbs	4.86 lbs
Material	Tritan	Tritan	Tritan	Tritan	Tritan
BPA-free	Yes	Yes	Yes	Yes	Yes
Customization	Yes	Yes	Yes	Yes	Yes
Colors	CL	CL	CL	CL	CL



Item	SW-2012-CL	SW-2010-CL	SW-2017-CL	SW-1446-1-CL	SW-1447-1-CL
Description	24.5 oz Copa Gin/ Margarita	14 oz Wine	5.5 oz Champagne	15 oz Wine	20 oz Balloon Wine
Rim-full	27 oz	16 oz	8 oz	16 oz	22 oz
Max. dia	3.67"	2.55"	3.17"	3.75"	4.5"
Height	8.13"	8.91"	8.4"	8.5"	8.25"
Rack Size	16 compart. w/ 4 extenders	25 compart. w/ extenders	16 compart. w/ extenders	16 compart. w/ 4 extenders	16 compart. w/ 4 extenders
Case pack/cube	2 dz/2.59	2 dz/0.06	2 dz/1.41	2 dz/1.32	2 dz/1.72
Weight	8.16 lbs	6 lbs	7.28 lbs	10 lbs	10 lbs
Material	Tritan	Tritan	Tritan	Tritan	Tritan
BPA-free	Yes	Yes	Yes	Yes	Yes
Customization	Yes	Yes	Yes	Yes	Yes
Colors	CL	CL	CL	CL	CL

To-Go Barware Flasks & Pouches

Increase your sales of specialty beverages to-go with cute and creative flasks and drink pouches. Both feature air-tight seals, keeping drinks fresh when prepped and stored cold ahead of service. Dress up your flasks and pouches with pre-made labels or partner with us to create your own look. Stylish tamper-resistant seals are also available to provide excellent peace of mind for your guests on the go.





BB-007-STR
Flask w/ Lid
7 oz
3.25" L x 1" W x 5.25" H
(6" H w/ Lid)
1 case of 96 pieces



LID-BB-007
Replacement Lids
1" dia., 0.625" H
48/case



BB-LBSM
White Matte Paper
2-Color Blank Label
3.5" L x 2" W
100 Labels/Roll



BB-TSS
Tamper-resistant seal
4" L x 0.75" W
100 Labels/Roll



**Sticker labels &
Tamper Seals
can be fully
customized!**



BB-001
8.5 oz
4.33" L x 8.25" H
100 pcs/cs



BB-002
16 oz
5.12" L x 8.9" H
100 pcs/cs



BB-003
25 oz
6.3" L x 10.25" H
100 pcs/cs

Reusable To-Go Tumblers

Disposable drinkware, lids and straws create a continuous and profound cycle of waste and spending. G.E.T. eliminates this wasteful cycle by offering operators a refillable keeper cup option made with recyclable plastic and available as a set with a reusable lid and straw!



Item	SC-16-SET-CB	SC-16-CB	SC-16-SET-BK	SC-16-BK
Description	16 oz Reusable Tumbler w/ Lid and Straw	16 oz Reusable Tumbler	16 oz Reusable Tumbler w/ Lid and Straw	16 oz Reusable Tumbler
Rim-full	18 oz	18 oz	18 oz	18 oz
Max. dia	4.25"	4.25"	4.25"	4.25"
Height	5"	5"	5"	5"
Rack Size	16 compart. w/ 2 extenders	16 compart. w/ 2 extenders	16 compart. w/ 2 extenders	16 compart. w/ 2 extenders
Case pack/cube	24 sets/2.5	2 dz/1.11	24 sets/2.5	2 dz/1.11
Weight	7.2 lbs	4.6 lbs	7.2 lbs	4.6 lbs
Material	Polypropylene	Polypropylene	Polypropylene	Polypropylene
BPA-free	Yes	Yes	Yes	Yes
Customization	Yes	Yes	Yes	Yes
Colors	CB (Cobalt Blue)	CB (Cobalt Blue)	BK (Black)	BK (Black)



Item	SC-16-SET-R	SC-16-R	SC-32-SET-R	SC-32-R
Description	16 oz Reusable Tumbler w/ Lid and Straw	16 oz Reusable Tumbler	32 oz Reusable Tumbler w/ Lid and Straw	32 oz Reusable Tumbler
Rim-full	18 oz	18 oz	34 oz	34 oz
Max. dia	4.25"	4.25"	4.6"	4.6"
Height	5"	5"	7.7"	7.7"
Rack Size	16 compart. w/ 2 extenders	16 compart. w/ 2 extenders	9 compart. w/ 3 extenders	9 compart. w/ 3 extenders
Case pack/cube	24 sets/2.5	2 dz/1.11	24 sets/3.48	2 dz/1.94
Weight	7.2 lbs	4.6 lbs	24 lbs	8.8 lbs
Material	Polypropylene	Polypropylene	Polypropylene	Polypropylene
BPA-free	Yes	Yes	Yes	Yes
Customization	Yes	Yes	Yes	Yes
Colors	R (Red)	R (Red)	R (Red)	R (Red)

See the full line here:

https://get-melamine.com/sites/default/files/reusable_double_walled_tumblers_factsheet.pdf

Jumbo Stemware

Ideal for Instagram, Jumbo Stemware provides operators with stylish, entertaining vessels to serve cocktails and enormous desserts or to create head-turning displays. And with martinis, margarita glasses and schooners, you have the variety to accommodate sweet and savory applications.

The biggest benefit, however, is safety. Other large stemware is made from glass, which is top-heavy and slippery, making shatterproof plastic construction the safer choice.





ITEM	SW-1419-1-SAN-	SW-1432-1-CL	SW-1415-1-SAN-CL
Description	48 oz. Jumbo Martini	32 oz. Jumbo Margarita	36 oz. Jumbo Margarita
Rim-full	48 oz.	32.6 oz.	40 oz.
Max dia.	9.25"	6.25"	6.25"
Height	9"	6.75"	8.5"
Rack size	peg rack w/ 4 extenders	peg rack w/ 3 extenders	peg rack w/ 3 extenders
Case pack/Cube	3 ea / 1.40	1 dz. / 1.27	1 dz. / 1.48
Weight	6.6 lbs	13 lbs	11.2 lbs
Material	SAN	SAN	SAN
BPA Free	YES	YES	YES
Customization	NO	YES	YES
Colors	CL, BK	CL	CL



ITEM	SW-1428-1-SAN-CL	SW-1550-CL
Description	36 oz. Jumbo Schooner	53 oz. Jumbo Schooner
Rim-full	38.85 oz.	62 oz.
Max dia.	5.25"	6"
Height	8"	8.5"
Rack size	9 compart w/ 4 extenders	peg rack
Case pack/Cube	1 dz. / 1.00	1 dz. / 1.90
Weight	6.5 lbs	7.2 lbs
Material	SAN	PC
BPA Free	YES	NO
Customization	YES	YES
Colors	CL	CL

Tritan Stackable Mugs

We've taken the industry's favorite Tritan mugs and tweaked the design for stackability.

Now you can get these wildly popular mugs in an even more operationally friendly design that makes it a breeze to store, transport and display.

We kept all the other top features, making these mugs as versatile as ever.



Item	TM-1317-BK	TM-1311-BK	TM-1317-IV	TM-1311-IV	TM-1317-W	TM-1311-W
Description	14 oz Mug	8 oz Mug	14 oz Mug	8 oz Mug	14 oz Mug	8 oz Mug
Rim-full	17.5 oz	11 oz	17.5 oz	11 oz	17.5 oz	11 oz
Max dia.	4.75" dia. w/ Handle	4.3" dia. w/ Handle	4.75" dia. w/ Handle	4.3" dia. w/ Handle	4.75" dia. w/ Handle	4.3" dia. w/ Handle
Height	4.1"	3.5"	4.1"	3.5"	4.1"	3.5"
Rack size	9 compart. w/ 1 extender	16 compart. w/ 1 extender	9 compart. w/ 1 extender	16 compart. w/ 1 extender	9 compart. w/ 1 extender	16 compart. w/ 1 extender
Case pack/cube	2 dz/0.89	2 dz/0.61	2 dz/0.89	2 dz/0.61	2 dz/0.89	2 dz/0.61
Weight	3.72 lb	2.76 lb	3.72 lb	2.76 lb	3.72 lb	2.76 lb
Material	Tritan	Tritan	Tritan	Tritan	Tritan	Tritan
BPA-free	Yes	Yes	Yes	Yes	Yes	Yes
Customization	Yes	Yes	Yes	Yes	Yes	Yes
Colors	BK	BK	IV	IV	W	W

Guest Dining Trays

Designed in partnership with operators, the new window service tray creates a sanitary solution that's optimal for transferring food orders from employees to guests.

The new window service tray enables a safe, simple contactless handoff of food orders at drive-thrus and other window service areas.

Drink holders placed at the back of the tray offer even weight distribution, unburdening staff and providing a smooth handoff to guests.





WST-1-BK
Window Service Tray
16.75" L x 8.7" W x 4" H
6 ea

Serving area:
Cup Holder: 3.25" Dia.
Tray Area: 6" L x 7.9" W x 2.75" Deep



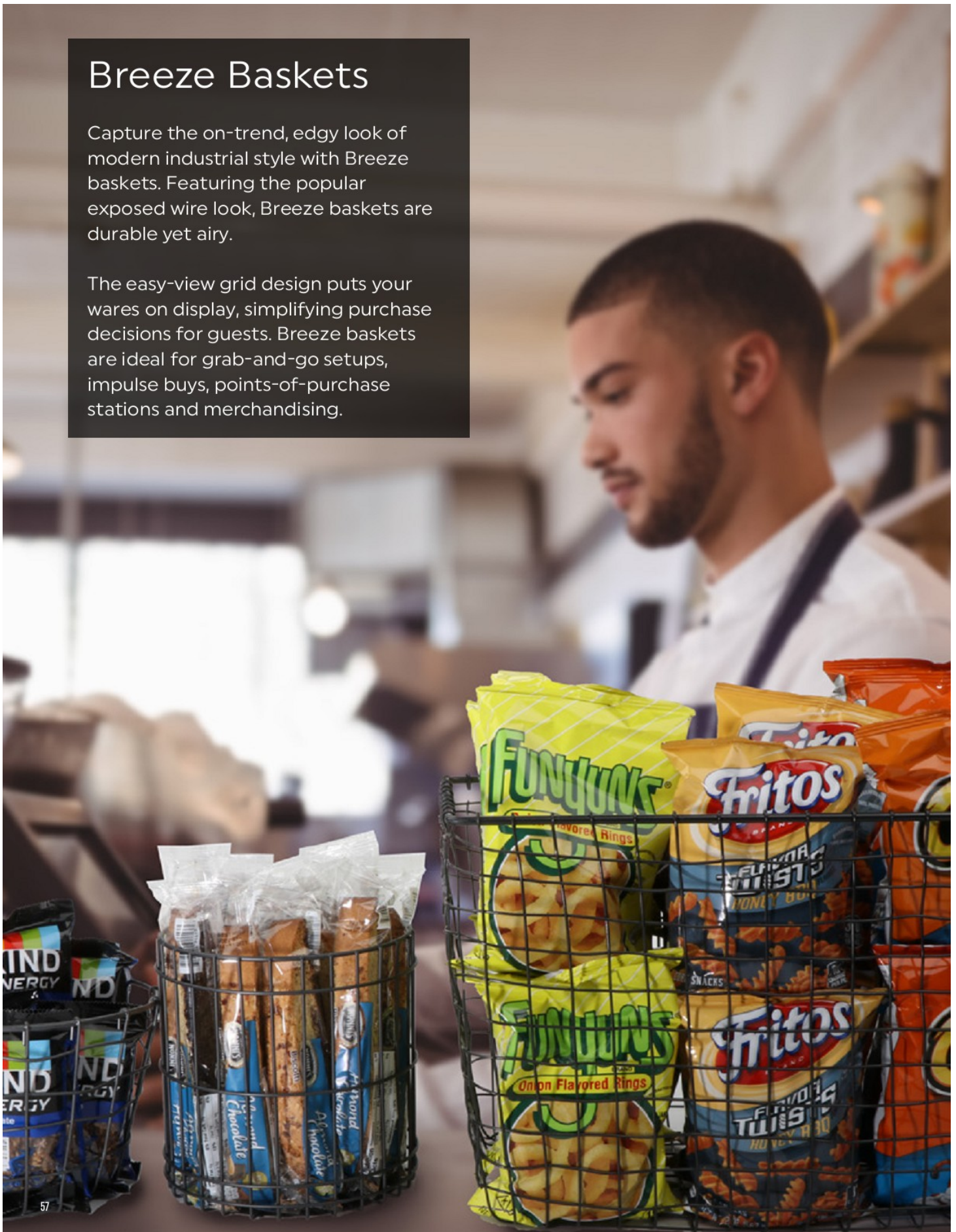
Polypropylene Fast Food Tray w/Holders

FT-20-	17" x 14"	43.2 cm x 35.6 cm	1 dz.	BK BR CB BU R OR
---------------	-----------	-------------------	-------	------------------

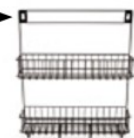
Breeze Baskets

Capture the on-trend, edgy look of modern industrial style with Breeze baskets. Featuring the popular exposed wire look, Breeze baskets are durable yet airy.

The easy-view grid design puts your wares on display, simplifying purchase decisions for guests. Breeze baskets are ideal for grab-and-go setups, impulse buys, points-of-purchase stations and merchandising.



Keyholes are compatible with pegboard backing for wall-hanging displays



WB-308-MG
Wall Hanging Basket 2 Levels
12" L x 3.5" W x 13" H
3 ea.



WB-306-MG
Condiment Basket
10" L x 6.9" W x 9" H
6 ea.



WB-309-MG
Sliding Shelf Baskets
13.7" L x 7.3" W x 10" H
3 ea.



WB-307-MG
Round Basket
6.5" dia., 6.37" H
12 ea.



WB-316-MG
Round Basket
8" dia., 5" H
12 ea.



WB-315-MG
Rectangular Basket w/
Swinging Handles
11.5" x 8.5" x 8"
12 ea.



WB-305-MG
Square Basket
11" L x 11" W x 8" H
6 ea.



WB-317-MG
Round Basket
8" dia., 8" H
12 ea.



WB-314-MG
Rectangular Basket w/
Swinging Handles
10" L x 5.5" W x 6.75" H
12 ea.



WB-313-MG
Rectangular Basket w/
Swinging Handles
14.5" L x 7.25" W x 9.25" H
12 ea.



WB-300-MG
Round Basket
11.5" dia., 14.4" H
6 ea.



WB-303-MG
Square Basket
15" L x 8" W x 10" H
4 ea.



WB-304-MG
Square Basket
14" L x 14" W x 11" H
6 ea.



WB-312-MG
Round Basket
15.75" dia., 18" H
6 ea.



WB-301-MG
Square Basket
16.5" L x 16.5" W x 25" H
6 ea.



WB-302-MG
Square Basket
19" L x 19" W x 14" H
6 ea.



WB-319-MG
Hanging Basket with
Loop Handles
13" dia., 9.5" H
20 ea.
Fits WB-310-MG



WB-311-MG
Floor Stand for Hanging Baskets
14" L x 13" W x 45" H
1 ea.
Fits WB-319-MG



WB-318-MG
Hanging Basket with
Loop Handles
11" dia., 7.75" H
30 ea.
Fits WB-311-MG



WB-311-MG
Floor Stand for Hanging Baskets
11.75" L x 10.5" W x 35.25" H
1 ea.
Fits WB-318-MG

Small

These baskets are perfect for counter-top displays near registers and along checkout lines. Protein bars, small bags of trail mix, and pens work great in these sizes.

Medium

Need something with a little more capacity? These baskets fill more area on countertops and also work great in tabletop displays. They can accommodate full-sized candy bars, bags of chips, and standard letter-sized notebooks.

Large

Ready for the big time? These baskets work best as floor displays or at the center of a tabletop display (use them on their side for an inviting modular display). These hold rolled beach towels, T-shirts, and stuffed animal souvenirs.

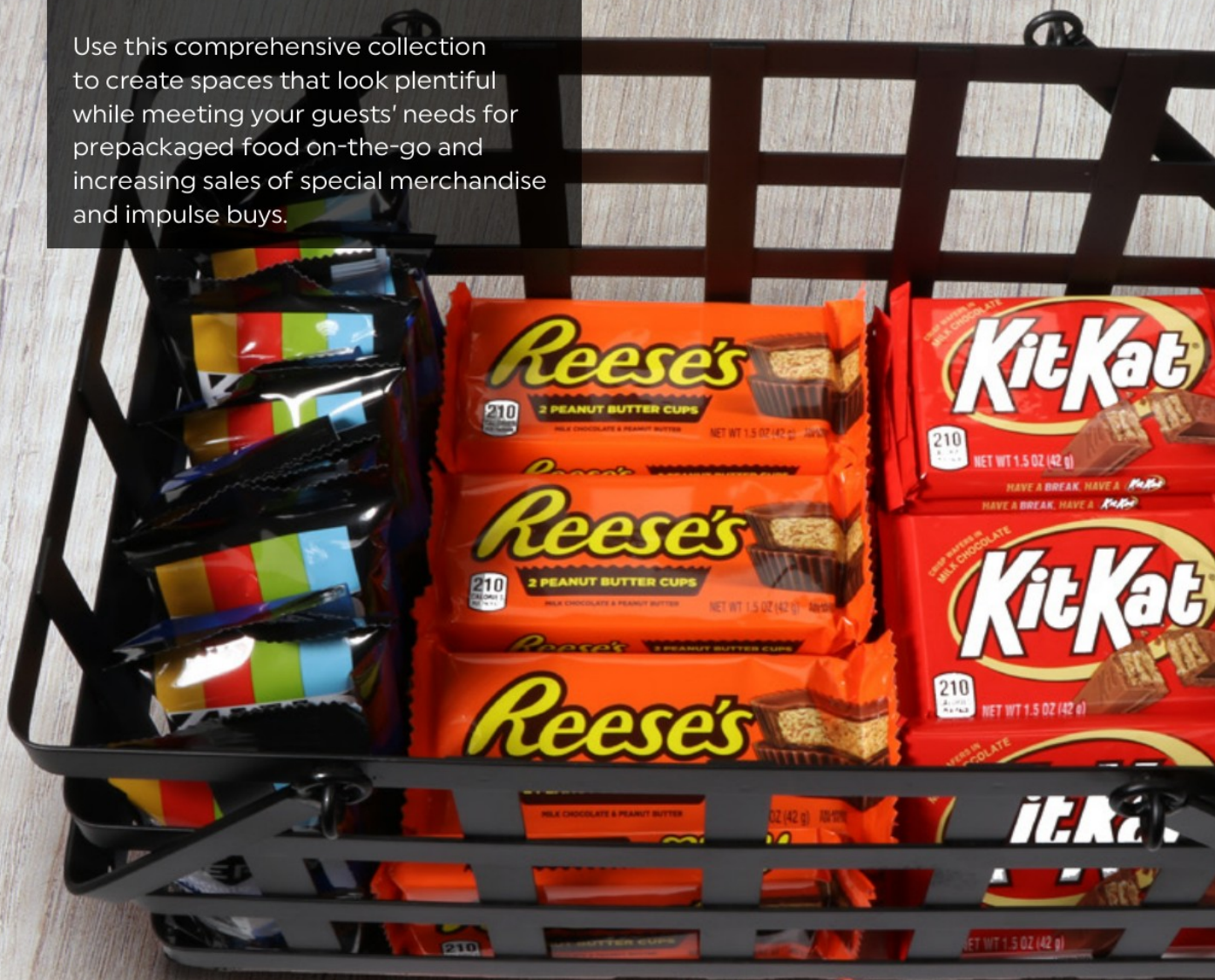
Floor Stands

Want to triple your selection without sacrificing floor space? These 3-tier stands come in two sizes to showcase goods in a trendy, stacked format.

Harvest Baskets

Bring the look of abundance to your points-of-purchase and grab-and-go stations with Harvest baskets. Woven black metal ribbons create a premium farmer's market style for an attractive way to display your wares.

Use this comprehensive collection to create spaces that look plentiful while meeting your guests' needs for prepackaged food on-the-go and increasing sales of special merchandise and impulse buys.





WB-561-BK
Rectangular Basket
11.75" L x 8" W x 4" H
32 ea



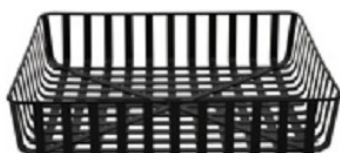
WB-560-BK
Square Basket
12" L x 4.25" H
16 ea



WB-567-BK
Rectangular Basket w/ Handles
12" L x 7.75" W x 6.25" H
16 ea



WB-566-BK
Rectangular Basket w/ Handles
18" L x 11.5" W x 8.5" H
8 ea



WB-564-BK
Square Basket
18" L x 18" W x 3.75" H
8 ea



WB-565-BK
Rectangular Basket
24" L x 18" W x 3.75" H
8 ea



WB-569-BK
Round Basket w/ Handles
9.5" dia., 7.25" H
16 ea



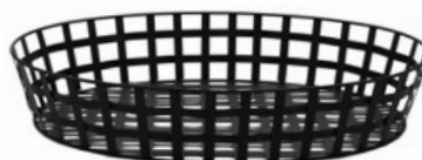
WB-568-BK
Round Basket w/ Handles
11.5" dia., 8.75" H
12 ea



WB-570-BK
Round Basket w/ Handles
12.5" dia., 9.75" H
6 ea



WB-562-BK
Oval Basket
19.5" L x 15" W x 4" H
8 ea



WB-563-BK
Oval Basket
24" L x 18" W x 4.5" H
8 ea





Attractive Wares for Comprehensive Service

When you're serving a crowd with an attendant-served buffet or self-serve style, you'll find a full selection of buffet systems, action stations and more for hot food, cold food or shelf-stable items like pickled veggies and cured meats.

Strata, the ingenious buffetware system, features purposeful design that puts the focus on your food. With smart features like enhanced safety mechanisms for canned fuel, lighter weight pieces and a brilliant storage and transport cart, your buffet service will be the talk of the town.

Other options include versatile action stations, which are ideal for display cooking and have options for flat-top or grill-top cooking.

Strata Buffetware

The Strata Cart Holds:

16 feet of banquet space

8 buffet units

200 lbs

See product details and
inspirational images
in the full brochure at
www.getserveware.com.



ST11102001
Stack & Storage Cart
30" x 22" x 25.5"



**ST11602114K**

Rectangular Chafing Dish Kit

**ST11602130**

Square Single Sauté/Cooker With Butane Stove

**ST11602118K**

Round Chafing Dish Kit

**ST11702014K**

Square Sauté/Cooker Kit

**ST11702011K**

Rectangular Grill Kit

**ST11702015K**

Square Single Warmer Kit

**ST11602129**

Rectangular Double Sauté/Cooker With Two Butane Stoves

**ST11712016K**

Square Serving Tray Kit

**ST11702012K**

Rectangular Double Sauté/Cooker Kit

**ST11209111EVK**

Rectangular Carving Station Kit polyethylene

**ST11702013K**

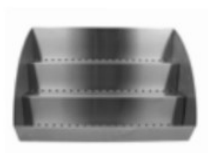
Rectangular Double Warmer Kit

**ST11209112EVK**

Square Carving Station Kit polyethylene

**ST11712014K**

Rectangular Serving Tray Kit

**ST11722001K**

Beverage Station Kit

Mondrian Cubes



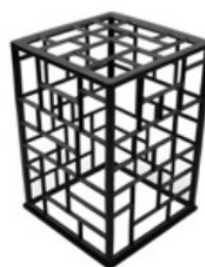
Powder Coated Black is stocked and available to ship from our Houston warehouse.
All 23 Bugambilia color options are available as special order.



MONPDC13BB
13" L x 6.75" H
Powder Coated
1 ea
Stocked

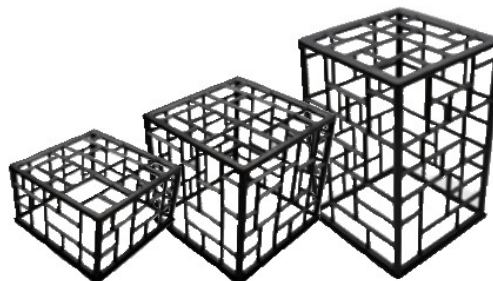


MONPDC11BB
11" L x 10.75" H
Powder Coated
1 ea
Stocked



MONPDC10BB
10" L x 10" 14.5" H
Powder Coated
1 ea
Stocked

MONPDCSETBB
Set of 3 Risers
10" L x 14.5" H; 11" L x 10.75" H; 13" L x 6.75" H
Powder Coated
1 Set
Stocked





Height Risers

AVAILABLE COLORS



» Foldable legs for easy setup and breakdown



Wood Foldable Risers

RISER-3-	3" tall, 13.8" x 7.5" Wood Riser w/Foldable Metal Legs	8 cm, 35 cm x 19 cm	1 ea.
RISER-6-	6" tall, 15.8" x 8.3" Wood Riser w/Foldable Metal Legs	15 cm, 40 cm x 21 cm	1 ea.
RISER-9-	9" tall, 19.7" x 9.8" Wood Riser w/Foldable Metal Legs	23 cm, 50 cm x 25 cm	1 ea.

Chopstix

WX01	8" tall	20.3 cm	1 ea.
WX02	12" tall	30.5 cm	1 ea.
WX03	16" tall	40.6 cm	1 ea.
WX04	21" tall	53.3 cm	1 ea.

Collapsible design



Heiss

The newest color for the Heiss collection, Antique White offers a trendy, food-friendly neutral that makes food pop.

This cozy color adds charms to any décor and speaks to the resurgence of farm-fresh ingredients and vintage recipes.

Our new 3/4 quart Heiss pots are perfect for individual servings of stews, gumbos and soups.





CA-005-AWH/BK/CC
3 qt Round Braiser
10.25" dia., 2.88" H
1 Set



CA-008-AWH/BK/CC
4.5 qt Round Braiser
12.63" dia., 2.88" H
1 Set



CA-015-AWH/BK/CC
7.5 qt Round Braiser
14.74" dia., 5.2" H
1 Set



CA-017-AWH/BK/CC
7.5 qt Rectangular Roaster
15.03" L x 10.34" W x 5.86" H
1 Set



CA-010-AWH/BK/CC
5 qt Rectangular Roaster
12.88" L x 10.88" W x 2.76" H
1 Set



CA-007-AWH/BK/CC
6.5 qt Oval Dutch Oven
12.13" L x 9.88" W x 4.25" H
1 Set



CA-012-AWH/BK/CC
4.5 qt Round Dutch Oven
9.5" dia., 4.25" H
1 Set



CA-006-AWH/BK/CC
6.5 qt Round Dutch Oven
11" dia., 4.5" H
1 Set



CA-013-GR/BK/CC
0.75 qt. Induction Ready
Round Dutch Oven with Lid
6" dia., 2.86" H
16 sets



CA-013-R/BK/CC
0.75 qt. Induction Ready
Round Dutch Oven with Lid
6" dia., 2.86" H
16 sets



CA-013-CB/BK/CC
0.75 qt. Induction Ready
Round Dutch Oven with Lid
6" dia., 2.86" H
16 sets

See the full line here:

<https://www.paperturn-view.com/?pid=MTY168910&p=315>

Heiss Accessories

Great design isn't always what you see.
Sometimes it's what you don't.

Building dramatic presentations with the subtle
design of Heiss accessories couldn't be easier.

The Heiss lid holder and knob cover add flair in
barely-there style while keeping food hot until it's
ready to serve, and increasing operational safety.





CA-LIDHLDR-5*
Wire Lid Holder
7.5" L x 4.5" W
24 ea.



KNOBCOVER-BK**
Silicone Knob Cover
1.62" dia.
1 dz.



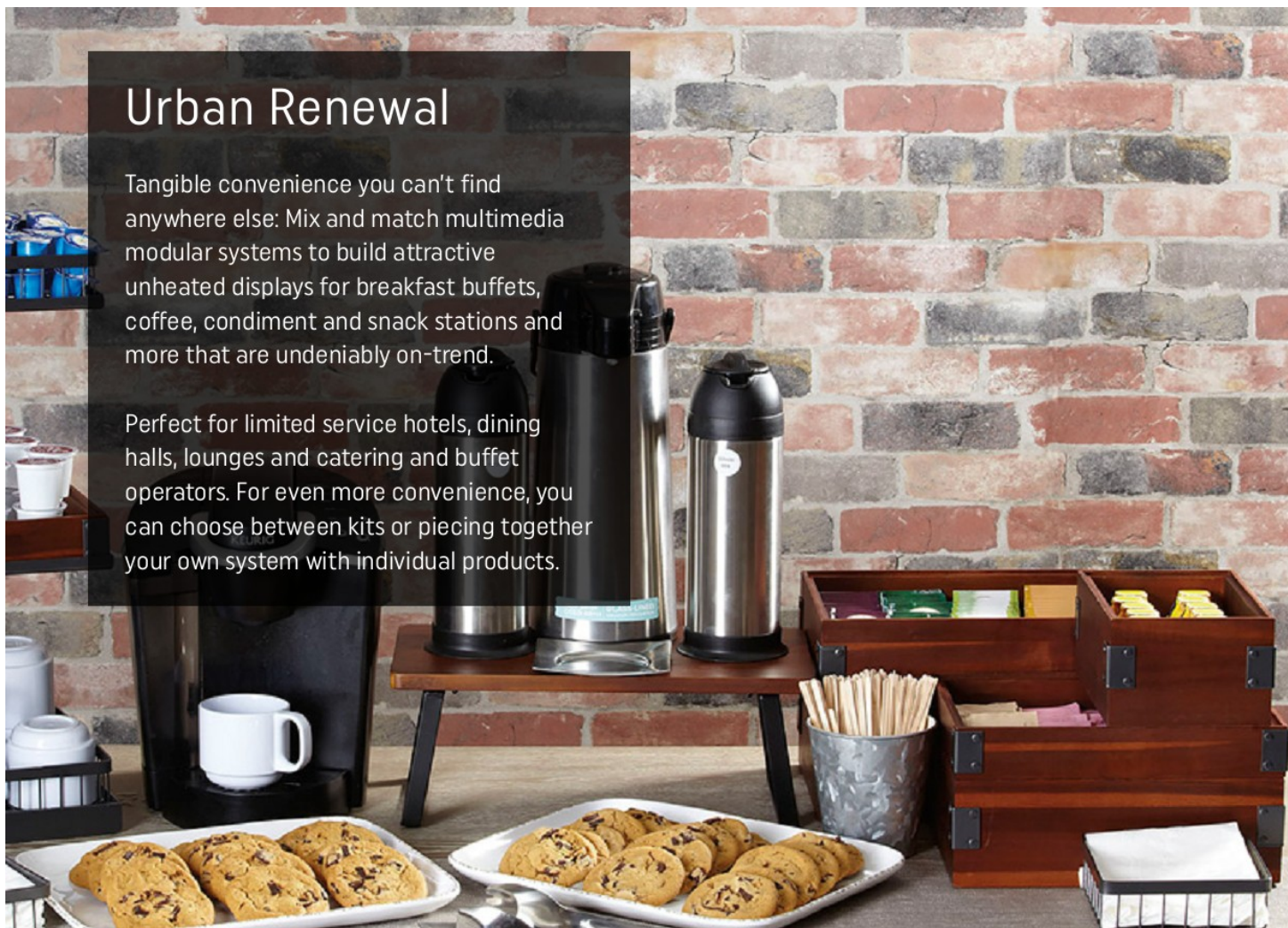
*For Heiss Cookware, does not fit Heiss Minis or CA-013-

**For Heiss Cookware, does not fit Heiss Minis

Urban Renewal

Tangible convenience you can't find anywhere else: Mix and match multimedia modular systems to build attractive unheated displays for breakfast buffets, coffee, condiment and snack stations and more that are undeniably on-trend.

Perfect for limited service hotels, dining halls, lounges and catering and buffet operators. For even more convenience, you can choose between kits or piecing together your own system with individual products.



Individual Items



IR-730-MG
Single Condiment Stand
4.5" L x 4.5" W x 4" H
12 ea.
Fits GL-444 and WB-444



IR-731-MG
Single Condiment Elevated Stand
4.5" L x 4.5" W x 5.5" H
12 ea.
Fits GL-444 and WB-444



IR-732-MG
Triple Condiment Stand
12.5" L x 4.5" W x 4" H
6 ea.
Fits GL-444 and WB-444



IR-733-MG
Triple Condiment Elevated Stand
12.5" L x 4.5" W x 5.5" H
6 ea.
Fits GL-444 and WB-444



IR-734-MG
Metal 6-Container Condiment Stand
12.5" L x 8.5" W x 3.75" H
6 ea.
Fits GL-444 and WB-444



MTS-30-MG
3 Tier Flatware Organizer
6.25" L x 4.5" W x 15.75" H
4 ea.



WB-444-UR
Wood Box
4" L x 4" W x 4" H
21 oz to Rim
48 ea.



GL-444
Glass Jar
4" L x 4" W x 4" H
26 oz to Rim
16 ea.



PL-444
Plastic Liner for Wood Box
4" L x 4" W x 4" H
21 oz to Rim
Set of 10



WB-447-UR
Wood Box
4" L x 4" W x 7" H
21 oz to Rim
48 ea.



PL-447
Plastic Liner for Wood Box
4" L x 4" W x 7" H
21 oz to Rim
Set of 10



CO-44-CL
Hinge Lid w/ Utensil Notch
4" L x 4" W x 4" H
Set of 12



CLIPS-44-CL
Replacement Hinge
Set of 20



WB-444-UR-CO44CL
Wood Square Jar
4"L x 4" W x 4" L w/ Lid &
Hinge Set
21 oz rim-full

Contains:
QTY 1: WB-444-UR
QTY 1: CO-44-CL



IR-730-MG-WB444-CO
Single Condiment Stand
w/ Wood Jar & Hinge Lid

Contains:
QTY 1: IR-730-MG
QTY 1: WB-444-UR
QTY 1: CO-44-CL



IR-731-MG-WB444-CO
Single Condiment
Elevated Stand w/ Wood
Jar & Hinge Lid

Contains:
QTY 1: IR-731-MG
QTY 1: WB-444-UR
QTY 1: CO-44-CL



IR-732-MG-WB444-CO
Triple Condiment Stand
w/ Wood Jars & Hinge
Lids

Contains:
QTY 1: IR-732-MG
QTY 3: WB-444-UR
QTY 3: CO-44-CL



IR-733-MG-WB444-CO
Triple Condiment
Elevated Stand w/ Wood
Jars & Hinge Lids

Contains:
QTY 1: IR-733-MG
QTY 3: WB-444-UR
QTY 3: CO-44-CL



IR-734-MG-WB444-CO
Metal 6-Container
Condiment Stand w/
Wood Jars & Hinge Lids

Contains:
QTY 1: IR-734-MG
QTY 6: WB-444-UR
QTY 6: CO-44-CL



MTS-30-MG-WB444-CO
3 Tier Flatware
Organizer w/ Wood Jars
& Hinge Lids

Contains:
QTY 1: MTS-30-MG
QTY 3: WB-444-UR
QTY 3: CO-44-CL



GL-444-CO44CL
Glass Square Jar
4"L x 4" W x 4" L w/ Lid &
Hinge Set
21 oz rim-full

Contains:
QTY 1: GL-444
QTY 1: CO-44-CL



IR-730-MG-GL444-CO
Single Condiment Stand
w/ Glass Jar & Hinge Lid

Contains:
QTY 1: IR-730-MG
QTY 1: GL-444
QTY 1: CO-44-CL



IR-731-MG-GL444-CO
Single Condiment
Elevated Stand w/ Glass
Jar & Hinge Lid

Contains:
QTY 1: IR-731-MG
QTY 1: GL-444
QTY 1: CO-44-CL



IR-732-MG-GL444-CO
Triple Condiment Stand
w/ Glass Jars & Hinge
Lids

Contains:
QTY 1: IR-732-MG
QTY 3: GL-444
QTY 3: CO-44-CL



IR-733-MG-GL444-CO
Triple Condiment
Elevated Stand w/ Glass
Jars & Hinge Lids

Contains:
QTY 1: IR-733-MG
QTY 3: GL-444
QTY 3: CO-44-CL



IR-734-MG-GL444-CO
Metal 6-Container
Condiment Stand w/
Glass Jars & Hinge Lids

Contains:
QTY 1: IR-734-MG
QTY 6: GL-444
QTY 6: CO-44-CL



MTS-30-MG-GL444-CO
3 Tier Flatware
Organizer w/ Glass Jars
and Hinge Lids

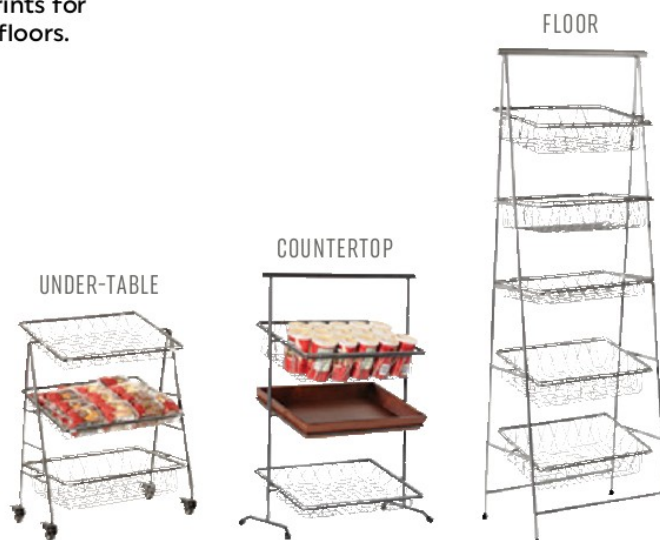
Contains:
QTY 1: MTS-30-MG
QTY 3: GL-444
QTY 3: CO-44-CL

Easily and stylishly upgrade merchandise displays with different metal and wood looks.

Vertical designs reduce display footprints for extra space on your countertops and floors.

1 CHOOSE YOUR STAND

5-tier and 3-tier styles in 3 colors



2 CHOOSE YOUR BASKETS / TRAYS

2" and 4" depths in 6 colors



AVAILABLE
BASKET
COLORS



WALNUT



URBAN RUSTIC



BAMBOO



SILVER



METAL GRAY

3 CHOOSE YOUR ACCESSORIES

Plastic liners, signage and hanging baskets



COUNTERTOP STANDS

- » Item IR-952 & IR-902
all 3 tiers are flat



BASKETS AND TRAYS SOLD SEPARATELY



- » Item IR-952T and IR-907
all 3 tiers are tilted



Rectangular 3-Tier Pane Stand

IR-952-	22.75" L x 11" W x 31.25" H
IR-902	22.75" L x 11" W x 31.25" H
IR-952T-	22.75" L x 11" W x 31.25" H
IR-907	22.75" L x 11" W x 31.25" H

1 ea.
1 ea.
1 ea.
1 ea.

AVAILABLE
STAND
COLORS



Stands fit baskets / trays:
IR-903, IR-904, WB-953, WB-954, WB-1812, BAMTRY-01, BAMTRY-02

Stands IR-902 and IR-907 are only available in (MG) Metal Gray.

UNDER-TABLE STANDS

Stand IR-2010-MG



Stand IR-2010-MG



BASKETS AND TRAYS SOLD SEPARATELY

3-Tier Merchandiser Stand w/ Wheels

IR-2010-MG 21.5" L x 12.25" W x 25.75" H 1 ea.

Stands fit baskets / trays:
IR-903, IR-904, WB-953, WB-954, BAMTRY-01, BAMTRY-02,

AVAILABLE
STAND
COLORS



Replacement Steel Swivel Wheels

WHEEL-MG 1 Set includes 2 Locking Wheels and 2 Non-Locking Wheels
6 sets

Wheels fit stands IR-900, IR-906, IR-951, IR-951T

1

FLOOR STANDS

Item IR-951 and IR-900
tiers 1, 4, and 5 are tilted

Stands fit baskets / trays:

IR-903, IR-904, WB-953, WB-954, WB-1812, BAMTRY-01, BAMTRY-02

Rectangular 5-Tier Pane Stand
IR-951- 23.5" L x 14" W x 64" H

1 ea.

AVAILABLE
STAND
COLORS

SV

SILVER

BK

BLACK

Rectangular 5-Tier Pane Stand
IR-900 23.5" L x 14" W x 64" H

1 ea.

AVAILABLE
STAND
COLORS



METAL GRAY

BASKETS AND TRAYS SOLD SEPARATELY



IR-951-SV

IR-951-SV shown with
BAMTRY-01, BAMTRY-02.



IR-951-BK

IR-951-BK shown with
WB-953-BK, WB-954-BK.

BASKETS AND TRAYS SOLD SEPARATELY



Stand IR-951T-BK

Shown w/ WB-1812WD-W,
WB-1814WD-W trays.



Stand IR-952T

Shown w/ WB-953-BK,
WB-954-BK baskets.

Item IR-951T, IR-906, and
IR-952T all 5 tiers are tilted

Stands fit baskets / trays:

IR-903, IR-904, WB-953, WB-954, BAMTRY-01, BAMTRY-02

Rectangular 5-Tier Pane Stand with Top Cross Bar
IR-951T- 23.5" L x 14" W x 64" H

1 ea.

AVAILABLE
STAND
COLORS

SV

SILVER

BK

BLACK

Rectangular 5-Tier Tilted Pane Stand with no Top Cross Bar
IR-952T- 21.5" L x 14" W x 57" H

1 ea.

Rectangular 5-Tier Flat Pane Stand with no Cross Bar
IR-952F- 21.5" L x 14" W x 57" H

1 ea.

Rectangular 5-Tier Pane Stand
IR-906 23.5" L x 14" W x 64" H

1 ea.

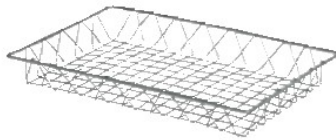
AVAILABLE
STAND
COLORS

MG

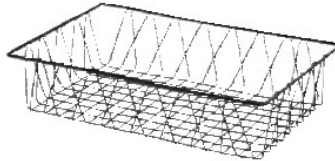
METAL GRAY

2

BASKETS / TRAYS



WB-953-SV



WB-954-BK

Rectangular Wire Basket

WB-953- 18" L x 12" W x 2" H

1 ea.

WB-954- 18" L x 12" W x 4" H

1 ea.

Fits Stands IR-900, IR-902, IR-906, IR-907,
IR-951, IR-951T, IR-952, IR-952T

Baskets WB-953, WB-954 only available in BK and SV

AVAILABLE
BASKET
COLORS

SV

SILVER

BK

BLACK



WB-1812-MG



WB-1814-MG

Rectangular Wire Basket w/Rim

WB-1812-MG 17.75" L x 11.25" W x 2" H 1 ea.**WB-1814-MG** 17.75" L x 11.25" W x 4" H 1 ea.

Fits Stands IR-900, IR-902, IR-906, IR-907,
IR-951, IR-951T, IR-952, IR-952T

AVAILABLE
BASKET
COLORS

MG

METAL GRAY



WB-1812WD-W



WB-1814WD-W

Wood Tray

WB-1812WD- 18.25" L x 12" W x 2" H 1 ea.**WB-1814WD-** 18.25" L x 12" W x 4" H 1 ea.

Fits Stands IR-900, IR-902, IR-906, IR-907,
IR-951, IR-951T, IR-952, IR-952T

AVAILABLE
BASKET
COLORS

W

WALNUT

UR

URBAN RUSTIC

3

ACCESSORIES



SGN-19



WB-HOOK-MG



WB-745-MG



WB-55-MG



ACRDIV-01 (for 2" depth)
ACRDIV-02 (for 4" depth)

Rectangular and Round Baskets w/ Hanging Hook

WB-55-MG 4.5" dia., 5.5" H, Round Basket 6 ea.**WB-745-MG** 7" L x 4.25" W x 5.5" H, Rect. Basket 6 ea.**WB-HOOK-MG** Hook for Baskets and Stands 6 ea.**SGN-19** Hanging Card Holder for Wire Baskets, holds 3.5" x 2" card 6 ea.

Fits 2" Deep Baskets and Trays

ACRDIV-01 18" L x 12" W x 4" H, 4-Comp. Acrylic Divider 1 ea.**PL-03** 17.25" L x 11.375" W x 1.5" H, Plastic Liner 48 ea.

Fits 4" Deep Baskets and Trays

ACRDIV-02 18" L x 12" W x 2" H, 4-Comp. Acrylic Divider 1 ea.**PL-05** 17.25" L x 11.375" W x 3.5" H, Plastic Liner 12 ea.

High Chairs

G.E.T.'s High Chairs & Booster Seats are Updated and Certified

G.E.T. secured certification from SGS, a CPSC-approved testing laboratory, ensuring the new high chair and booster seat design is 100% in compliance with ASTM standards.

Operators who purchase G.E.T. high chairs and booster seats can rest assured their guests' children are seated in the safest possible manner.



Walnut

Item Number	Description	QTY
HC-100-MOD-W-1	High Chair, Assembled, Walnut	1 ea.
HC-100-MOD-W-2	High Chair, Assembled, Walnut	2 ea.
HC-100-MOD-W-KD-1	High Chair, Assembly Required, Walnut	1 ea.
HC-100-MOD-W-P	High Chair, Assembled, Palletized, Unboxed, Walnut	28 ea.
HC-100-MOD-TALL-W-1	Counter Height High Chair, Assembled, Walnut 22" L x 25" W x 36" H	1 ea.
HC-100-MOD-TALL-W-2	Counter Height High Chair, Assembled, Walnut 22" L x 25" W x 36" H	2 ea.
HC-100-MOD-TALL-W-KD-1	Counter Height High Chair, Assembly Required, Walnut 22" L x 25" W x 36" H	1 ea.



Mahogany

Item Number	Description	QTY
HC-100-MOD-M-1	High Chair, Assembled, Mahogany	1 ea.
HC-100-MOD-M-2	High Chair, Assembled, Mahogany	2 ea.
HC-100-MOD-M-KD-1	High Chair, Assembly Required, Mahogany	1 ea.
HC-100-MOD-M-P	High Chair, Assembled, Palletized, Unboxed, Mahogany	28 ea.



Natural

Item Number	Description	QTY
HC-100-MOD-N-1	High Chair, Assembled, Natural	1 ea.
HC-100-MOD-N-2	High Chair, Assembled, Natural	2 ea.
HC-100-MOD-N-KD-1	High Chair, Assembly Required, Natural	1 ea.
HC-100-MOD-N-P	High Chair, Assembled, Palletized, Unboxed, Natural	28 ea.

Booster Seats

MULTIPLE STRAPS FOR EXTRA SAFETY
G.E.T. booster seats come with a t-strap harness and an extra rear strap for securing booster seats to chairs.



Walnut

BS-200-MOD-W
Booster Seat, Double Straps
1 ea.



Mahogany

BS-200-MOD-M
Booster Seat, Double Straps
1 ea.



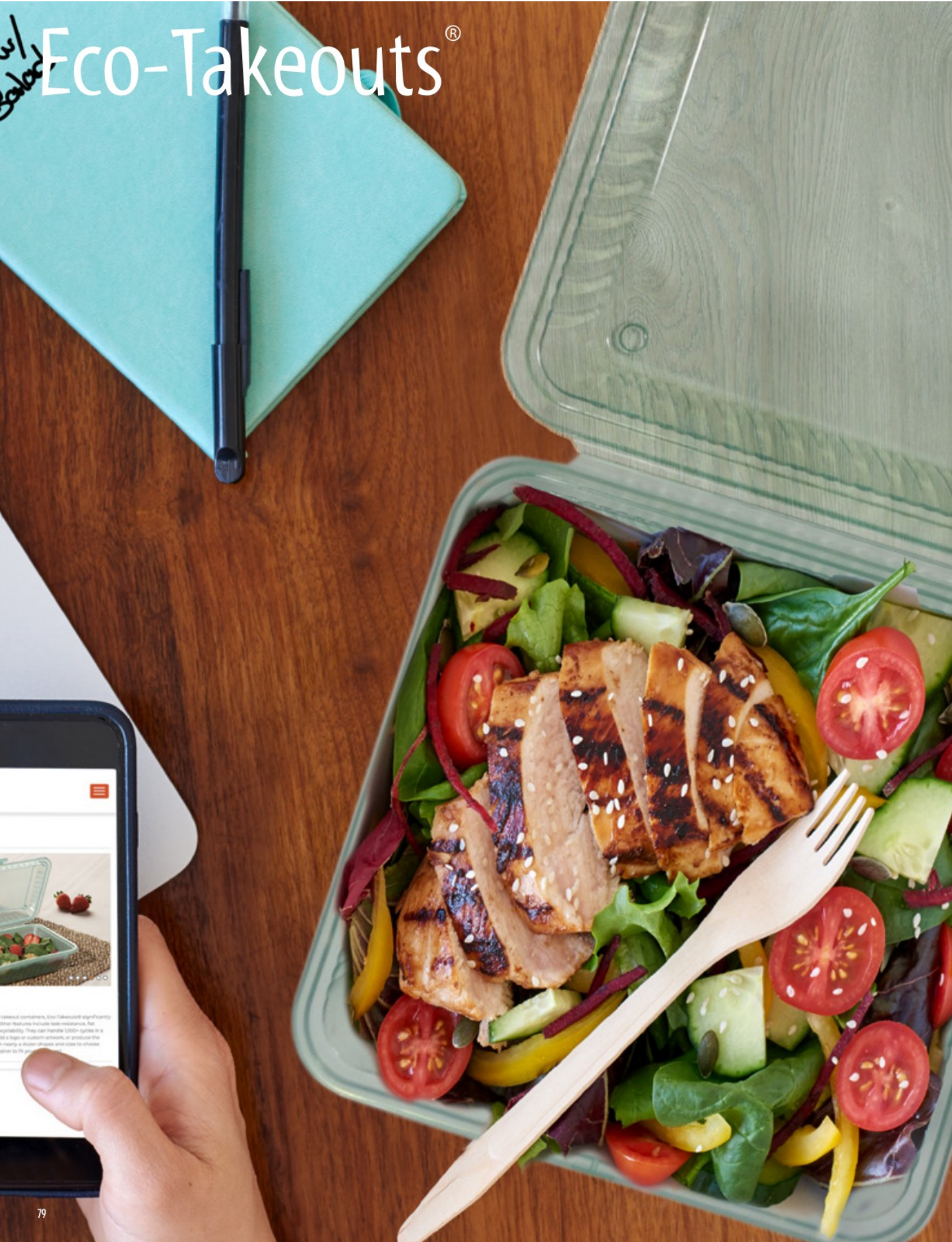
Natural

BS-200-MOD-N
Booster Seat, Double Straps
1 ea.



Straps
Replacement Fabric Straps for High Chair
1 ea.







EC-09-1-JA
3-Compartment
9" x 9", 3.5" tall
22.9 cm x 22.9 cm, 8.9 cm
1 dz.



EC-10-1-JA
Single Entrée
9" x 9", 3.5" tall
22.9 cm x 22.9 cm, 8.9 cm
1 dz.



EC-11-1-JA
Half Size
9" x 6.5" x 2.75"
22.9 cm x 16.5 cm x 7 cm
1 dz.



EC-12-1-JA
3-Compartment
9" x 9", 2.5" tall
22.9 cm x 22.9 cm, 6.4 cm
1 dz.



EC-15-2-JA
2-Compartment
10" x 8", 3" tall
25.4 cm x 20.3 cm, 7.6 cm
1 dz.



EC-16-JA
3-Compartment
9" x 9", 2" tall
22.9 cm x 22.9 cm, 5.1 cm
1 dz.



EC-17-JA
Single Entrée
9" x 9", 2" tall
22.9 cm x 22.9 cm, 5.1 cm
1 dz.



EC-18-JA
Half Size
9" x 6.5" x 2"
22.9 cm x 16.5 cm x 5.1 cm
1 dz.



EC-19-JA
Half Size
8" x 5.5", 2.75" tall
20 cm x 14 cm, 7 cm
1 dz.



EC-08-1-JA
Single Entrée
5" x 5" x 3.25"
12.7 cm x 12.7 cm x 8.3 cm
2 dz.



EC-22-JA
Rectangular Food Tray
10" x 5.5", 1.75" tall
25.4 cm x 14 cm x 4.5 cm
2 dz.



EC-25-1-JA
Single Pizza Slice
Fits slice from 16" pie
10.5" x 8.25" x 0.75"
26.7 cm x 21 cm x 1.9 cm
2 dz.



EC-07-1-JA
Soup Container
12 oz. (12 oz. rim-full),
4.25" dia., 2.75" tall
355 ml (355 ml), 10.8 cm
1 dz.



EC-13-1-JA
Soup Container
16 oz. (16 oz. rim-full),
4.25" dia., 3.75" tall
473 ml (473 ml), 10.8 cm
1 dz.



EC-07-LID-JA
Replacement Lid for
EC-07-1 and EC-13-1
1 dz.



EC-07-HAN-JA
Replacement Handle for
EC-07-1 and EC-13-1
1 dz.



EC-27-1-JA
Whole 10"-12" Pizza
14.2" L x 14" W x 2.2" H
2 dz
*Available Oct 2021



EC-20-JA
Side Dish
6 oz (6.75 oz rim full),
3.25" dia., 3" tall
2 dz.



EC-21-JA
Side Dish
12 oz (14 oz rim full)
4.25" dia., 3" tall
2 dz.



EC-23-1-JA
Soup Container
12 oz (14 oz rim full)
4.4" dia., 2.3" tall
1 dz.



EC-24-1-JA
Soup Container
16 oz (18 oz rim-full)
4.4" dia., 2.9" tall
1 dz.



EC-26-1-JA
Soup Container
32 oz. (41 oz. rim-full),
6.5" dia., 3.25" tall
2 dz.

Eco-Takeouts[®]





EC-10-1-CL
Single Entrée
9" x 9", 3.5" tall
22.9 cm x 22.9 cm, 8.9 cm
1 dz.



EC-11-1-CL
Half Size
9" x 6.5" x 2.75"
22.9 cm x 16.5 cm x 7 cm
1 dz.



EC-19-CL
Half Size
8" x 5.5", 2.75" tall
20 cm x 14 cm, 7 cm
1 dz.



EC-08-1-CL
Single Entrée
5" x 5" x 3.25"
12.7 cm x 12.7 cm x 8.3 cm
2 dz.



EC-09-1-CL
3-Compartment
9" x 9", 3.5" tall
22.9 cm x 22.9 cm, 8.9 cm
1 dz.



EC-12-1-CL
3-Compartment
9" x 9", 2.75" tall
22.9 cm x 22.9 cm, 6.4 cm
1 dz.



EC-15-2-CL
2-Compartment
10" x 8", 3" tall
25.4 cm x 20.3 cm, 7.6 cm
1 dz.



EC-25-1-CL
Single Pizza Slice
Fits slice from 16" pie
10.5" x 8.25" x 0.75"
26.7 cm x 21 cm x 1.9 cm
2 dz.



EC-07-1-CL
Soup Container
12 oz. (12 oz. rim-full),
4.25" dia., 2.75" tall
355 ml (355 ml), 10.8 cm
1 dz.



EC-13-1-CL
Soup Container
16 oz. (16 oz. rim-full),
4.25" dia., 3.75" tall
473 ml (473 ml), 10.8 cm
1 dz.



EC-07-LID-CL
Replacement Lid for
EC-07-1 and EC-13-1
1 dz.



EC-07-HAN-CL
Replacement Handle for
EC-07-1 and EC-13-1
1 dz.



EC-27-1-CL
Whole 10"-12" Pizza
14.2" L x 14" W x 2.2" H
2 dz
*Available Oct 2021



EC-20-CL
Side Dish
6 oz (6.75 oz rim full),
3.25" dia., 3" tall
2 dz.



EC-21-CL
Side Dish
12 oz (14 oz rim full)
4.25" dia., 3" tall
2 dz.



EC-23-1-CL
Soup Container
12 oz (14 oz rim full)
4.4" dia., 2.3" tall
1 dz.



EC-24-1-CL
Soup Container
16 oz (18 oz rim-full)
4.4" dia., 2.9" tall
1 dz.



EC-26-1-CL
Soup Container
32 oz. (41 oz. rim-full),
6.5" dia., 3.25" tall
2 dz.

Eco-Takeouts Luxury Black Edition

The only reusable to-go container program with an upmarket classic black look, made even better by its sustainability halo.

This five-item focused collection accommodates all popular menu items and features the same durability, cost and waste savings you love.





EC-09-1-BK
Three-compartment reusable to-go container
9" L X 3.5" H
1 dz



EC-10-1-BK
Single-compartment reusable to-go container
9" L x 3.5" H
1 dz



EC-11-1-BK
Half-size reusable to-go container
9" L x 6.5" W x 2.75" H
1 dz



EC-08-1-BK
Single-entrée to-go container
5" L x 3.25" H
2 dz



EC-23-1-BK
Soup/side dish to-go container
12 oz, 4.4" dia., 2.3" H
1 dz

A Bowl Lot of Love

From healthy to indulgent, good things come in bowls.

Eco-Takeouts is the only complete line of reusable bowls ready to help you capture those good vibes, made even better by reducing so much waste.

Hot or cold, sweet or savory, breakfast or midnight snack: If it's served in a bowl, you'll find a reusable solution for it here.

Plus, enjoy these brilliant design elements:

- Thick base protects hands from hot food
- Minimal replacement parts to manage
- Stacking and nesting capabilities
- Microwavable in 1-minute pulses



NEW! 32 oz Bowl

This 32 oz entrée bowl opens doors across the world. Explore Asia with pho, ramen, biryani, poke and more. Take a trip to Italy with saucy fresh pastas. Or visit the past with ancient grain bowls of quinoa, barley, freekeh or farro.

With a leak-proof lid, your guests never have to worry about spills.



EC-26-1-JA
Soup Container
32 oz. (41 oz. rim-full),
6.5" dia., 3.25" tall
2 dz.



EC-07-1-JA
Soup Container
12 oz. (12 oz. rim-full),
4.25" dia., 2.75" tall
355 ml (355 ml), 10.8 cm
1 dz.



EC-13-1-JA
Soup Container
16 oz. (16 oz. rim-full),
4.25" dia., 3.75" tall
473 ml (473 ml), 10.8 cm
1 dz.



EC-07-LID-JA
Replacement Lid for
EC-07-1 and EC-13-1
1 dz.



EC-07-HAN-JA
Replacement Handle for
EC-07-1 and EC-13-1
1 dz.



EC-26-1-CL
Soup Container
32 oz. (41 oz. rim-full),
6.5" dia., 3.25" tall
2 dz.



EC-07-1-CL
Soup Container
12 oz. (12 oz. rim-full),
4.25" dia., 2.75" tall
355 ml (355 ml), 10.8 cm
1 dz.



EC-13-1-CL
Soup Container
16 oz. (16 oz. rim-full),
4.25" dia., 3.75" tall
473 ml (473 ml), 10.8 cm
1 dz.



EC-07-LID-CL
Replacement Lid for
EC-07-1 and EC-13-1
1 dz.



EC-07-HAN-CL
Replacement Handle for
EC-07-1 and EC-13-1
1 dz.



EC-23-1-JA
Soup Container
12 oz (14 oz rim full)
4.4" dia., 2.3" tall
1 dz.



EC-24-1-JA
Soup Container
16 oz (18 oz rim-full)
4.4" dia., 2.9" tall
1 dz.



EC-23-1-CL
Soup Container
12 oz (14 oz rim full)
4.4" dia., 2.3" tall
1 dz.



EC-24-1-CL
Soup Container
16 oz (18 oz rim-full)
4.4" dia., 2.9" tall
1 dz.



EC-23-1-BK
Soup Container
12 oz (14 oz rim full)
4.4" dia., 2.3" tall
1 dz.

Pizza Party

Whether you're slinging single slices or prepping whole pies, you now have sustainable options to package both.

Your guests will love this option because these boxes provide a much better eating experience than flimsy paper plates or greasy-bottom cardboard.

And you won't find these options anywhere else.



Whole Pie or by the Slice

Newest to the lineup is the reusable box for a whole 10"-12" pizza. You get the cost and waste savings benefits of a reusable option, plus these thoughtful design elements:

- Tops and bottoms are the same so you can easily match parts
- Corrugated bottom for crisp crusts
- Space-saving stackability



EC-27-1-CL
Whole 10"-12" Pizza
14.2" L x 14" W x 2.2" H
2 dz

The one-of-a-kind pizza slice box also features a corrugated base for extra crispness and provides a top-notch eating experience.

- Fits standard slice from a 16" pizza
- Nests when open, stacks when closed
- Hinged lid for quick packing, saving time over other methods like wrapping in foil or using clumsy paper clamshells
- Superior heat retention over disposables



EC-25-1-CL
Single Slice Pizza
10.5" L x 8.25" W x 0.75" H
2 dz



EC-27-1-1A
Whole 10"-12" Pizza
14.2" L x 14" W x 2.2" H
2 dz



EC-25-1-1A
Single Slice Pizza
10.5" L x 8.25" W x 0.75" H
2 dz

Eco-Takeouts Hot & Cold Cup

The first beverage option created specifically for the Eco-Takeouts program not only offers a better experience, it improves safety, too:

- Sturdy lid seal
- No clumsy sleeves needed for hot drinks
- Safely microwavable in :30 pulses
- Customizable



Reusable Hot & Cold Cup

Benefits

- Significant reduction in spending and waste when compared to disposable options, helping you save money and meet sustainability goals
- The operational ease of serving either a hot or cold drink in the same cup
- An equal or better guest experience compared to disposables



EC-116-1-JA
Double Walled Cup & Lid
16 oz
3.5" dia., 5.3" H
With Lid: 3.9" dia., 6.1" H
2 dz

Features

- Commercial dishwasher safe
- Microwavable in :30 second pulses
- Can withstand 32°F to 200°F
- Double-walled for excellent temperature retention, hot or cold
- Ergonomic drinking spout with large aperture for straws and foamy drinks
- Lid has leak-proof seal
- Keep cups upright when filled with beverages, the drinking spout is uncovered
- Replacement lids and gaskets available
- Recyclable #5 plastic
- BPA-free
- Customizable



Eco Drop Bin

A simple, comprehensive solution for easily returning used Eco-Takeouts containers.

The Eco Drop Bin features a sleek design made from highly durable powder-coated steel and is fully customizable.



Eco Drop Bin

- Sleek design with option to custom decorate
- A simple, comprehensive drop-off solution
- Ideal capacity of minimum twenty-five (25) 9" x 9" containers per Eco Drop Bin
- Capacity size encourages frequent pickup for optimal sanitation and a light load for staff
- Made from durable powder-coated steel
- Can earn free Eco Drop Bins when purchasing in quantity with Eco-Takeouts containers
- Sealed along the bottom to deter pests



Keys & Replacement Keys

Each Eco Drop Bin comes with 2 keys.

Replacement keys can be ordered in sets of 2 and received within 3 days on average.

BIN-KEY
Replacement Key
2 ea

BIN-1-BK
Eco Drop Bin
27" L x 29" W x 40" H
1 ea

Accompanying Components

The Eco Drop Bin is designed for use with a square 40 gallon waste container and liner (round containers will not fit).

These containers and their liners are standard sizes and available through most dealers.



Square Waste Container
(Rounds will not fit)
23.5" L x 28.75" H
40 gallons




Evolution Lids, Plate Covers & More Reusables

NSF


More than a method to save money and reduce waste over disposable plate covers, Evolution reusable plate covers and lids, and more reusable covering options, keep food warm and sanitary and offer a much quieter experience during transport than their metal counterparts. Durable polypropylene won't dent like metal and provides a lengthy in-service life with easy care and maintenance.




Evolution Reusable Covers



CO-111-CL
Plastic Plate Cover
Fits 11" Plate
11.75" dia., 3" H
2 dz




LID-CS117-CL
Rectangular Plate Cover
12.25 L x 7.75 W x 2.37 H
2 dz




CO-107-CL
Reusable Plate Cover for WP-10
2 dz.


(10.5" Wide Rim Plate), top inset dia. 2.75", securely holds B-45 bowl




LID-B24-CL
Reusable Lid for B-24
(24 oz. Bowl)
12 dz.



LID-CS6101-CL
Reusable Lid for CS-6101
(20 oz. Bowl)
12 dz.



LID-B525-CL
Reusable Lid for B-525
(16 oz. Bowl)
24 dz.



LID-B45-CL
Reusable Lid for B-45
(10 oz. Bowl)
24 dz.

Plate Covers



AVAILABLE COLORS

CL

A



Item Number	Description	Top Inset Dia.	Fits G.E.T. Item Number	Case	Colors
CO-90-CL	Polypropylene Plate Cover for 8.25" - 9" Round Plate	5.5"	CP-530, P-1530	1 dz.	CL -
CO-91-CL	Polypropylene Plate Cover for 8.63" - 9.25" Round Plate	5.5"	WP-9, NP-9, E-9, BAM-1009	1 dz.	CL -
CO-92-CL	Polypropylene Plate Cover for 8.8" - 9.63" Round Plate	6.88"		1 dz.	CL -
CO-93-	Polypropylene Plate Cover for 9.7" - 10.4" Round Plate	7.5"		1 dz.	CL A
CO-94-	Polypropylene Plate Cover for 9.25" - 10" Round Plate	8"	BF-010	1 dz.	CL A
CO-95-CL	Polypropylene Plate Cover for 10.4" - 11.15" Round Plate	4.5" & 8.75"	CP-532, WP-10, BAM-1010	1 dz.	CL -
CO-100-	Polypropylene Plate Cover for 7.9" - 8.8" Round Plate	4.18"		1 dz.	CL A
CO-101-	Polypropylene Plate Cover for 10.6" - 11.4" Round Plate	4.5" & 6.5"	B-1611	1 dz.	CL A
CO-102-CL	Polypropylene Plate Cover for 11.25" - 12" Round Plate	4.75" & 7"		1 dz.	CL -
CO-103-CL	Polypropylene Plate Cover for 10.75" - 11.8" Round Plate	7.25"	WP-12, BAM-1012	1 dz.	CL -
CO-105-A	Polypropylene Plate Cover for 11.25" - 12.13" Round Plate	4.75" & 7"		1 dz.	- A



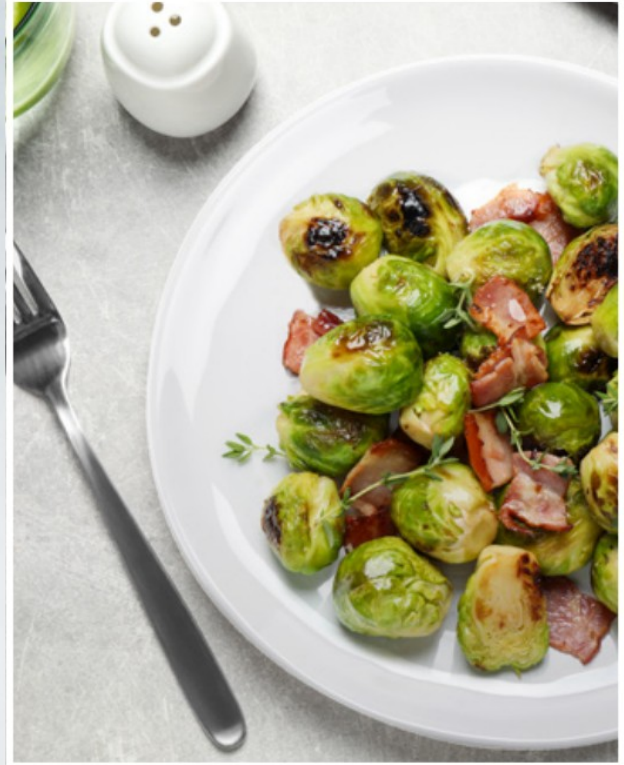
Designed To Serve

To help operators who seek only the best in fashion-forward design, operational durability and attentive customer service create memorable guest experiences while lowering total operating costs by setting the dining supplies standard for dinnerware, drinkware and displayware.

WWW.GETSERVEWARE.COM

Item: CATALOGNEWPRODUCTS21

Tabletop



Display



Buffet & Banqueting

