

Amerikooler LLC.
575 E 10th Avenue
Hialeah, FL 33010 USA
T: 305-884-8384
www.amerikooler.com

To Whom It May Concern:

Amerikooler walk-in coolers and freezers are manufactured in compliance with applicable regulatory and sanitation standards, including certification to NSF International requirements and listings by Underwriters Laboratories where applicable. Units are designed and constructed to meet applicable provisions of the International Code Council codes, including the International Building Code (IBC) and the International Energy Conservation Code (IECC), as adopted by local jurisdictions.

Amerikooler panels fabricate modularly panels and doors designed to spec per order. These panels are designed for fast and easy assembly, disassembly, expansion and replacement with 4" Extruded Polystyrene (XPS Grey) rigid foam insulation. All panel Insulation is 4" thick, consisting of specially formulated DuPont™ Styrofoam™ Brand Panel Core 20 ST100 Freezer XPS GREY (Extruded Foam Insulation, specifically designed for walk-in cooler industry use. XPS is a high performance, void free, high density, closed cell insulation that performs as well or better than foamed in place (FIP) insulation panels of the same thickness in every category and complies with (ASTM C578) standards

Thermal Resistance: Amerikooler meets or exceeds (ASTM C518) standards for; Cooler wall, ceiling, door, and floor panels are R-28.8, this exceeds the minimum required R-25. Freezer wall, ceiling, and door panels are R-32, meeting the minimum required R-32. Freezer floor panels are R-28, meeting the minimum required R-28. All panel insulation comes standard with a 50 Year R-value warranty included from Dupont.

- Thermal Conductivity: (K factor) is 0.13 BTU/hr./sq. ft., per degrees/Fahrenheit/inch (ASTM C518) and 10 CFR 431 sub-Part R Appendix B
- 100% Hydrophobic: Water Absorption (ASTM C272), Water Vapor Permeance (ASTM E96), Compressive Strength (ASTM D1621)
- 100% Recyclable: Certified by third party environmental product declaration (EPD) through ULSpot® to be manufactured with 20% pre-consumer recycled content and is fully recyclable.

Certified by third party environmental product declaration (EPD) through ULSpot® to be produced with reduced greenhouse gas (GHG) emissions, lowered global warming potential (GWP) and lower embedded carbon profile (ECP). (Document #: 224531-4150/234614-4150). Compliant with International Code Council Evaluation Service Report (ICC-ESR 4755) and (ICC-2142) with LEED certification for environmental product declaration (EPD) for blowing agents, no HCFCs or CFCs Insulation ignition: Self ignition temperature rating at 809.6°F (432°C) (ASTM D1929), Flash ignition temperature rating at 716°F (380°C) (ASTM D 1929).

Finished panel: burning characteristics comply with (ASTM E84) and (UL 723) with flame spread of 15 or less and a smoke developed of 450 or less. Amerikooler panels are tested in accordance with ASTM E-84 and meet the following criteria:

- Class A: Flame Spread 0-25; smoke-developed 0-450
- Class B: Flame Spread 26-75; smoke-developed 0-450
- Class C: Flame Spread 76-200; smoke-developed 0-450.

Amerikooler walk-ins are designed to comply with applicable energy codes, including the U.S. Department of Energy (DOE) regulations for walk-in coolers and freezers under 10 CFR 431, as well as IECC and ASHRAE 90.1 requirements where adopted.

Doors: Kason 0027 Safeguard® deadbolt keyed, padlock capable, pull handle latch with Interior safety lock release handle in polished or brushed chrome finish. Deadbolt is secured using cylinder lock or padlock, or both. Standard, twist-off glow in the dark inside release knob prevents lock-ins. Two 1/4 turn inside release options meet ADA requirements for fast exit. Kason 1346 Performer™ lift-off adjustable super cam-rise spring assisted hinges in polished or brushed chrome finish. Strap adjusts horizontally, providing door lift and rotation to compensate for sag over time, cam-rise technology assists closing and reduces gasket wear, even with uneven floors. 1346 has 40% more rise than traditional on-rise hinges to magnify the benefit. Flange has a removable cap, allowing lift-off of door without removing hinges. Meets NSF/ANSI Standard 2 for food equipment components. Kason 1825 is mounted with pre-wired PRV narrow jamb heated pressure relief vent on freezer doors. Lightweight, springless valves provide greater air flow at lower pressure than spring-loaded valves. Port installs through 2 1/2" (63.5mm) diameter hole with minimal wiring.

Kason 1095 Spring actuated door closer. Operates by direct force adding to natural swing momentum of closing door. Designed to overcome slowing action of gaskets and air pressure. Provides fast, full closure for heavy walk-in doors. Easy installation; simply snaps onto concealed mounting plate. Rubber roller ensures quiet operation. 24 DTL Digital LED thermometer with on/off pilot light switch. illuminated light switch allows operators to turn on the walk-in light easily. Kason 1807L Vapor-proof LED light fixture centered on interior door jamb. Low profile high impact Lexan lens with anti-glare technology. Wall-mount design directs light into aisle for better visibility of product on shelves. Junction box with 12 cubic inches of wiring volume with ground boss provided. Minimal heat generation will lower utility cost. Exceed Federal Energy Act requirements, rated for 50,000+ hours of life. Doors are NSF certified and, where applicable, UL listed. Each door is equipped with an interior safety release mechanism and is engineered to provide a positive seal to minimize air infiltration.

Amerikooler walk-in coolers and freezers are manufactured to provide reliable thermal performance while meeting applicable sanitation, safety, and energy efficiency standards. Supporting documentation, including certification listings and technical data sheets are attached as additional reference documents.

Should you require additional information, please contact Amerikooler directly.



Respectfully,
Juan Madariaga



President
Amerikooler LLC.



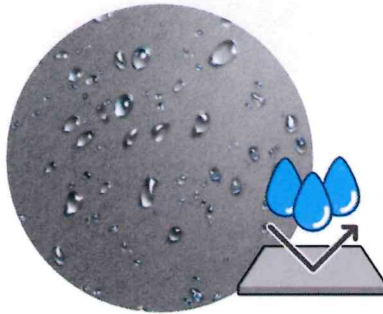
New AK-XPS4 Grey Insulation



Performance

50 Year Thermal Warranty

AK-XPS Grey offers consistent thermal performance, durability, ease-of-install and weather resistance superior to other insulation types.



Weatherproof

Insulating Shield

Dense uniformity of XPS Insulation stands the test of time by protecting against moisture saturation, temperature differentials and even heat resistance.



Sustainability

Looking To The Future

Reformulated Styrofoam™ Brand XPS Grey (ST-100) helps reduce global warming potential (GWP) and embodied carbon without lowering performance.

For The Most Energy-Efficient, Long Lasting, And Durable Walk-In Coolers And Freezers, Choose Amerikooler XPS Grey

The next step in insulation

XPS Grey has been engineered with the expertise of building science leaders from DUPONT to provide highly efficient continuous insulation. With reduced greenhouse gas (GHG) emissions, reduced embodied carbon profile, and reduced global warming potential (GWP), XPS Grey is 100% recyclable without losing its properties.

Amerikooler is the optimal choice for long term durability and environmental consciousness. We're helping to save the earth, one panel at a time!



CERTIFICATIONS



Certified by verified Environmental Product Declarations (EPD) through ULSpot®



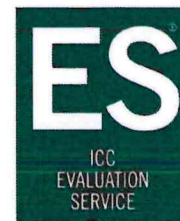
Certified by EPD through ULSpot® to contain an average of 20% pre-consumer recycled content.



U.S. Green Building Council's Leadership in Energy and Environmental Design (LEED®) Certification



Covered under ICC-ESR 2142 for non-HFC regulated states in the U.S.



Compliant in select U.S. states Code Reports ICC-ESR 4755 in the U.S.



Compliant to ASTM C578 guidelines for specifications and physical property requirements.

INNOVATION AND EXCELLENCE SINCE 1985

1.800.627.5665

575 East 10th Avenue, Hialeah Florida 33010 USA

www.amerikooler.com



amerikooler®

TAKING COOL FURTHER™
Walk-In Coolers and Freezers

New AK-XPS4 Grey Insulation

URETHANE FOAMED-IN-PLACE INSULATION EXPANDED POLYSTYRENE BEAD INSULATION AK-XPS4 BLUE / GREY EXTRUDED POLYSTYRENE INSULATION

	VS		VS	
Cell Insulation Contains Voids		Cell Insulation Contains Minor Voids		Void Free Cell Insulation
Inconsistent Foam Density		Regular Foam Density		Ultra Uniform Density
Deteriorates Over Time		Extremely High Smoke Rating		Non Deteriorating
Inconsistent R-Values		Low R-Values		Maintains Consistent R-Values
No Thermal Warranty		No Thermal Warranty		50 Year Thermal Warranty
Potential Unseen Air Pockets		Low Structural Quality		4" Thick Insulation Panels
Semi Water Resistant		Fully hydrophobic (Water Repelling)		Fully hydrophobic (Water Repelling)
Not EISA Complaint		Not EISA Complaint		EISA Complaint

INNOVATION AND EXCELLENCE SINCE 1985

DuPont™ Styrofoam™ Brand Panel Core 20 Freezer XPS Foam Insulation

High Performance Insulation for Walk-In Coolers and Freezers

FEATURES/BENEFITS

Description

DuPont™ Styrofoam™ Brand Panel Core 20 Freezer Extruded Polystyrene (XPS) Foam Insulation* was designed specifically for the walk-in cooler industry meeting specific regulations for this high performance market. It consists of a closed-cell, high performance core material featuring a proprietary extrusion process facilitating precise control of parameters like density, cell size and cell orientation. This process yields foam boards that can stand up to the most demanding and extensive array of composite panel applications.

Styrofoam™ Brand Panel Core 20 Freezer is supplied in sheets that have been carefully engineered and planed to precise tolerances for an exceptional bonding surface. The closed-cell structure of Styrofoam™ Brand Panel Core 20 resists absorption of water, which helps maintain panel integrity and insulating properties in low temperature applications and other environments with high humidity and moisture conditions. And though the insulation bonds well with adhesives, less adhesive is absorbed by the foam - meaning less glue is required for effective, long-lasting adhesion of facer materials.

Available Sizes

Styrofoam™ Brand Panel Core 20 Freezer Insulation is available with straight edge treatment in nominal board thicknesses of 4", board lengths up to 216" and board widths up to 50" for the walk-in cooler market. Not all product sizes are available in all regions.

Ease of Use

Styrofoam™ Brand Panel Core 20 Freezer Insulation is strong, yet lightweight and easy to fabricate into various sizes and shapes to meet specific design needs. Styrofoam™ Brand Panel Core 20 sheets:

- Have been carefully engineered and planed to precise tolerances
- Provide an exceptional bond surface
- Resist water absorption
- Help maintain panel integrity and insulating properties in low-temperature, high-humidity and high-moisture conditions
- Bonds well with adhesives but does not absorb them, resulting in less wasted glue

Sustainable Solutions

Styrofoam™ Brand Panel Core 20 Freezer Insulation uses BluEdge™ technology. It is hydrochlorofluorocarbon (HCFC) free** with zero ozone depletion potential. Styrofoam™ Brand insulation products produced in North America contain an average of 20% pre-consumer recycled content certified by UL Environment Inc.

PROPERTIES

Styrofoam™ Brand Panel Core 20 Freezer Insulation exhibits physical properties as indicated in Table 1 when tested as represented. Review all instructions and (Material) Safety Data Sheet ((M)SDS) before use. Please contact DuPont at 1-866-583-2583 when additional guidance is required for writing specifications that include this product.

* Styrofoam™ Brand Panel Core 20 is a former product of The Dow Chemical Company

** manufactured without hydrochlorofluorocarbon

**TABLE 1: Physical Properties of Styrofoam™ Brand Panel Core 20 Freezer XPS Foam Insulation**

Test Method	Property	Typical Value	Units
ASTM D1622	Density	1.8	lb/ft ³
ASTM D1621	Compressive Strength ¹	20	psi, min., vertical
ASTM D1623	Tensile Strength	50	lb/in ² , min., vertical
ASTM C273	Shear Strength	25	lb/in ² , min.
ASTM C273	Shear Modulus	300	lb/in ² , min.
ASTM C203	Flexural Strength	40	lb/in ² , min., extruded
ASTM C203	Flexural Modulus	1,500	lb/in ² , min., extruded
ASTM C272	Water Absorption	0.1	% by vol., max.
ASTM E96	Water Vapor Permeance ⁴	1.5	perm, max.
R-Value²			
ASTM C518	per inch (25 mm), °F-ft ² -h/Btu, fresh @ 55°F (13°C) min.	7.2 **	-
ASTM C518	per inch (25 mm), °F-ft ² -h/Btu, fresh @ 20°F (-7°C) min.	8.0 **	-
Surface burning characteristics³			
ASTM E84	Flame Spread Index	15	-
	Smoke Developed Index	165	-

¹ Vertical compressive strength measured at 10 percent deformation or at yield, whichever occurs first.

² R means resistance to heat flow. The higher the R-value, the greater the insulating power.

³ This numerical flame spread rating is not intended to reflect hazards presented by this or any other material under actual fire conditions.

⁴ Actual water vapor permeance for 1" thick material. Value decreases as thickness increases.

* Properties shown are representative values for 1" thick material.

** Per DOE-10 CFR Appendix B to Subpart R of Part 431. For foam produced as board stock "final chemical form" means after extrusion and ready for assembly into a panel or after assembly into a panel.

TESTING

Applicable Standards

Styrofoam™ Brand Panel Core 20 Freezer Insulation complies with ASTM C578 Type X.

Contact your local DuPont sales representative or local authorities for state and local building code requirements and related acceptance.

Code Compliances

Styrofoam™ Brand Panel Core 20 Insulation complies with the following code(s):

- UL Classified, See Classification Certificate D369

Warranty

In the United States, a 50-year thermal limited warranty is available on Styrofoam™ Brand insulation products 1.5 inches and greater. For thickness less than 1.5 inches, other warranties may apply. Visit building.dupont.com/warranties or contact your DuPont representative for details.

HANDLING

WARNING: For Professional Use Only. Read and follow the entire Handling section and the Safety Data Sheets (SDSs, formerly MSDSs or Material Safety Data Sheets) carefully before use. The information below is designed to protect the user and allow for safe use and handling of Styrofoam™ Brand products. Follow all applicable federal, state, local and employer regulations.

Precautionary Statements

- Styrofoam™ Brand Panel Core 20 Freezer Insulation is combustible; protect from high heat sources. A protective barrier or thermal barrier may be required as specified in the appropriate building code.
- Like all cellular polymers, this product will degrade upon prolonged exposure to sunlight. A covering may be used to block ultraviolet radiation and prevent degradation. Other coverings to protect the foam from the elements and to meet applicable fire regulations may also be required.
- Due to the critical technical design aspects of many of its applications, DuPont recommends that qualified designers or consultants design your system.

- For more information on codes and compliances, consult SDS, call DuPont at 1-866-583-2583 or contact your local building inspector. DuPont can also offer general guidelines and recommendations for Styrofoam™ Brand Panel Core 20.

Shelf Life and Storage

When stored outdoors, keep insulation boards tarpred or covered to protect from weather and weighted down to prevent boards from being blown around by the wind. Store above standing water.

Disposal

Dispose of any residual Styrofoam™ Brand product, coated debris, or solvent in accordance with applicable federal, state, and local government regulations.



**For more information visit us at
styrofoam.com/panelcore
or call 1-866-583-2583**

NOTICE: No freedom from any patent owned by DuPont or others is to be inferred. Because use conditions and applicable laws may differ from one location to another and may change with time, Customer is responsible for determining whether products and the information in this document are appropriate for Customer's use and for ensuring that Customer's workplace and disposal practices are in compliance with applicable laws and other government enactments. The product shown in this literature may not be available for sale and/or available in all geographies where DuPont is represented. The claims made may not have been approved for use in all countries or regions. DuPont assumes no obligation or liability for the information in this document. References to "DuPont" or the "Company" mean the DuPont legal entity selling the products to Customer unless otherwise expressly noted. **NO EXPRESS WARRANTIES ARE GIVEN EXCEPT FOR ANY APPLICABLE WRITTEN WARRANTIES SPECIFICALLY PROVIDED BY DUPONT. ALL IMPLIED WARRANTIES INCLUDING THOSE OF MERCHANTABILITY AND FITNESS FOR A PARTICULAR PURPOSE ARE EXPRESSLY EXCLUDED.** The buyer assumes all risks as to the use of the material. Buyer's exclusive remedy or any claim (including without limitations, negligence, strict liability, or tort) shall be limited to the refund of the purchase price of the material. Failure to strictly adhere to any recommended procedures shall release DuPont Specialty Products USA, LLC or its affiliates, of all liability with respect to the materials or the use thereof. The information herein is not intended for use by non-professional designers, applicators or other persons who do not purchase or utilize this product in the normal course of their business.

DuPont™ Styrofoam™ Brand Extruded Polystyrene Foam Insulation

CAUTION: This product is combustible. Protect from high heat sources. A protective barrier or thermal barrier may be required as specified in the appropriate building code. For more information, consult (Material) Safety Data Sheet ((M)SDS), call DuPont at 1-866-583-2583 or contact your local building inspector. In an emergency, call 1-989-636-4400 in the U.S. or 1-519-339-3711 in Canada.

WARNING: Rigid foam insulation does not constitute a working walkable surface or qualify as a fall protection product.

Building and/or construction practices unrelated to building materials could greatly affect moisture and the potential for mold formation. No material supplier including DuPont can give assurance that mold will not develop in any specific system.

DuPont™, the DuPont Oval Logo, and all trademarks and service marks denoted with ™, ® or © are owned by affiliates of DuPont de Nemours, Inc. unless otherwise noted. © 2019 DuPont.

43-D100112-enUS-0619 CDP

0027C SafeGuard® Deadbolt Locking Handle



© U.S. Trademark 5,760,309

- Deadbolt security for walk-ins at the economy of a locking pull handle
- Compare total cost and function of this patented deadbolt latch

Easy Operation and Use

- Finger slide seats and opens deadbolt
- Deadbolt can be locked in open position
- Unlocked door easily pulls or pushes open

Top Form and Function

- Bold styling complements all popular Kason walk-in hinges
- User-friendly design ensures ideal door function when used with Kason hinges

Assured Security and Safety

- Deadbolt is secured using cylinder lock and/or padlock
- Features tamper-resistant screw hole plugs
- Standard, twist-off glow in the dark inside release knob prevents lock-ins
- Two quarter turn inside release options to meet ADA requirements for fast and simple activation to see page **page 49**

Fast, Simple Installation

- Surface-mounts like a locking pull handle; no complex in-door installation
- Fits standard doors without modification

Saves Maintenance Costs

- Almost nothing to break or wear out assures long service life
- Locking mechanism located entirely on outside of panel resists freeze-up, even on extreme low-temp walk-ins

Offsets

- Standard latch is for flush doors but offset blocks are available to fit offset doors from 1/2" to 1-5/8"

Part No.	Description	Wall Thickness	Finish
10027C00004	Deadbolt Latch	4" (101.6 mm)	Chrome
10027C00005	Deadbolt Latch	4" (101.6 mm)	Brushed Chrome
10027C00007	Deadbolt Latch	5" (127 mm)	Brushed Chrome
10027C00008	Deadbolt Latch	5" (127 mm)	Chrome
10027C00E04	Deadbolt Latch, 1-5/8" (41.3 mm) Offset	4" (101.6 mm)	Chrome

Specifications (Latch)

Material

Die-cast Zamak handle housing, tongue and strike

Finishes

Polished chrome and brushed chrome

Packaging

4 per carton

Locking Mechanism

Accepts Master #1 UJ Padlock with 5/16" shank

Mounting

Drilled and countersunk for 1/4" (6.4 mm) fillister head screws

Specifications (Strike)

Material

Die-cast Zamak housing, brass rod, glow in the dark turn-knob, or zinc quarter turn lever with glow expansion rings

Finishes

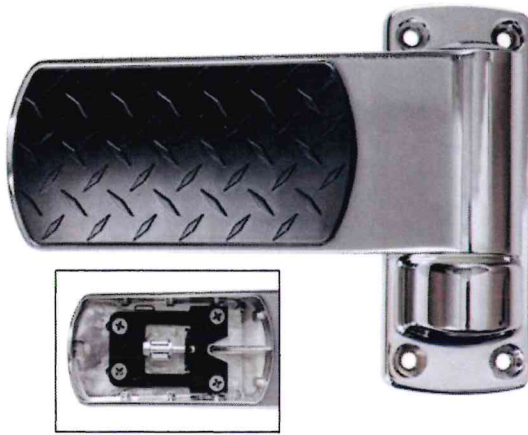
Housing same as latch

Flush offset and 4" thick wall standard. Other wall thicknesses are available. Contact Kason customer service for more information. 1-5/8" offset option listed in model number table; Available down to 1/2"

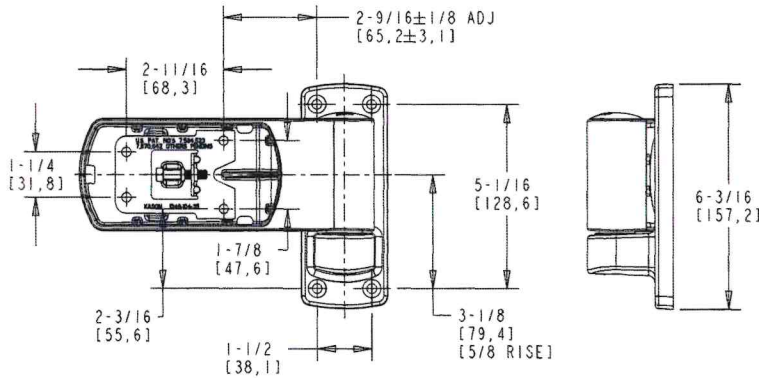
0485 Quarter Turn Low Conduction Inside Release (ADA Compliant)



COMPONENT



U.S. Patent Nos: D719,809; 7,945,996;
8,800,109; 9,140,045; 9,416,574;
9,493,973, 7,870,642 & 7,584,523



- Strap adjusts horizontally, providing door lift and rotation to compensate for sag over time
- Built-in spring action is standard
- Time-tested cam-rise technology assists closing and reduces gasket wear, even with uneven floors. 1346 has 40% more rise than traditional on-rise hinges to magnify the benefit
- Flange has a removable cap, allowing lift-off of door without removing hinges
- Left and right hand hinges use the same component parts for faster mounting and replacement
- Covers mount securely over hinge mechanism to keep out dirt and debris
- Performer 1346 meets NSF/ANSI Standard 2 for food equipment components
- Spacer shims available for strap and flange to maintain alignment of pivot centerlines when kick plates are used under the lower hinges. Proper pivot alignment eliminates binding and unwanted hinge wear and tear

Specifications

Material

Precision die-cast zinc flange with nylon cam, die-cast zinc strap, and elastomer insert cover (also available in stainless steel; see page **page 79**)

Finish

Polished chrome or brushed chrome with black accents. Custom colors and/or patterns available, based on volume commitment

Offset

Available from 0-2"

Adjustment

Each strap adjusts ±1/8" to provide 1/4"+ height adjustment. To adjust, loosen main clamping bolts, jack door using micro adjustment screw and tighten clamping bolts

Packaging

4 each

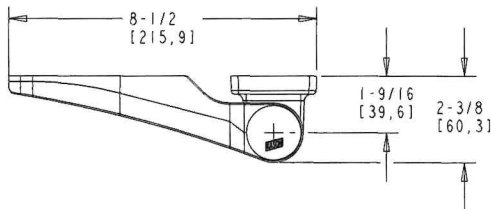
Mounting

Drilled for 1/4" (6 mm) screws

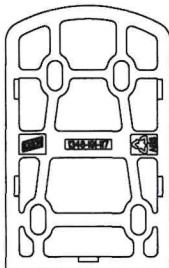
Load Rating

Refer to Kason's Walk-in Hardware catalog section, Hinge Selector Load Chart, page **page 53**, Group D, and associated footnote

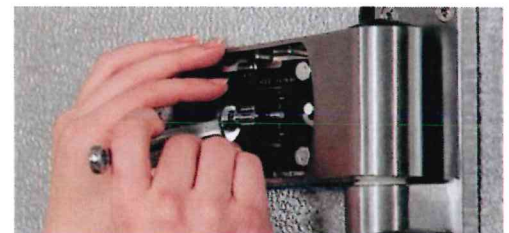
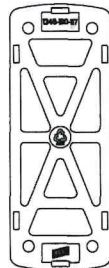
Flush



Strap Spacer

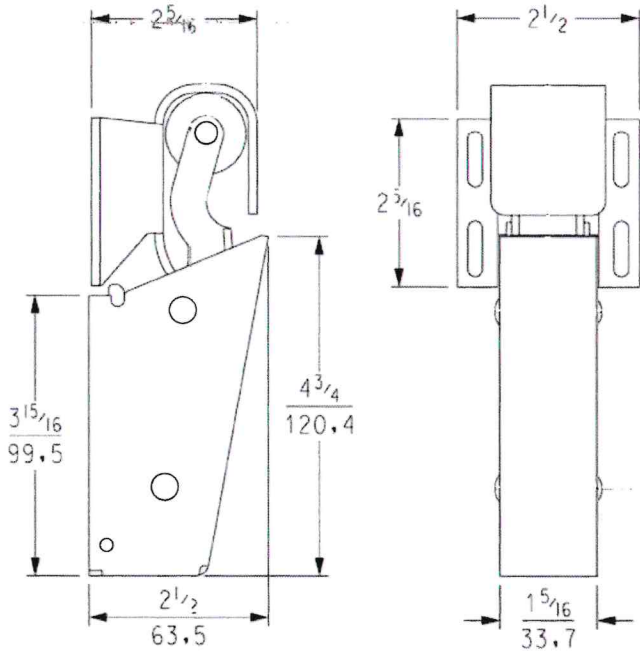


Flange Spacer



Easy adjustment by one person, open door to make adjustments





© U.S. Trademark 4,906,918
Hook sold separately.

- Operates by direct force adding to natural swing momentum of closing door
- Designed to overcome slowing action of gaskets and air pressure
- Provides fast, full closure for heavy walk-in doors
- Easy installation; simply snaps onto concealed mounting plate
- Simple spring mechanism gives long, trouble-free life
- Steel housing and bend-resistant hook assure long wear in heavy use
- Polymer roller ensures quiet operation
- Ideal complement for Kason Walk-in door hardware to provide self-closing doors

Specifications

Material

Steel housing and mounting plate. Housing and hook also available in stainless steel

Finish

Bright chrome. Available in powder coat and stainless steel

Mounting

Drilled for No. 10 (5.0 mm) screws (included)

Weight

See order information

Part No.	Description	Qty./Carton*	Wgt./Carton
11095000013	Steel Closer	24	30.0 lb (13.6 kg)
11095000093	Stainless Steel Closer	24	30.0 lb (13.6 kg)

*Closers and hooks packaged separately.

© 2026 Kason Industries, Inc.

0126 LIT 001



1825LE Intelli-Vent® Pressure Relief Port (Replacement for 1825 Port)

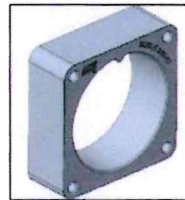
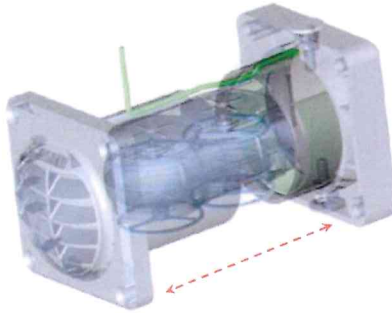


U.S. Patent No. 10,731,912; 10,739,055

Exterior View



Interior View



Spacer for 3" Wall

- Compact design to fit in tight spaces with improved flow capacity
- Dual port staged valves adjust to airflow conditions making entry/exit easier
- Heater coupled directly to louver mitigates frost accumulation
- 4" to 6" telescopic adjustment provides flexibility for multiple wall thicknesses
- High-flow capacity for walk-in coolers up to 7,000 cf and freezers up to 3,500 cf (per port)
- U.I. File No.: 57306

Part No.	Description	Qty./Carton	Wgt./Carton
11825LE0004	Pressure Relief Port, 120 VAC, 4" to 6" Wall Thickness	10	6.2 lb (2.8 kg)
11825LE0006	Pressure Relief Port, 230 VAC, 4" to 6" Wall Thickness	10	6.2 lb (2.8 kg)
11825LE0008	Pressure Relief Port, Non-Heated, 4" to 6" Wall Thickness	10	6 lb (2.7 kg)
11825LE3350117	3" Wall Spacer		

Specifications

Material

Heater Cover: Gray polycarbonate
 Heated Louver: Die-cast aluminum
 Heater Sleeve: Gray ABS
 Louver Exterior: Gray ABS
 Valve: Gray ABS
 Cap: Gray ABS
 Retaining Wheel: 300 series stainless steel
 Label: Mylar
 Screen: Aluminum
 Screws and Washers: Zinc plated steel
 Heater: Printed element encased in polymer thick film

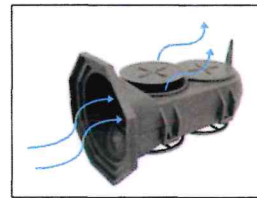
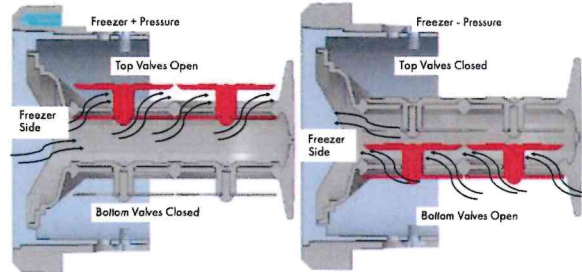
Electrical

0.05 Amp @ 120 VAC, 50/60 Hz, 5 W heater
 0.03 Amp @ 230 VAC, 50/60 Hz, 5 W heater

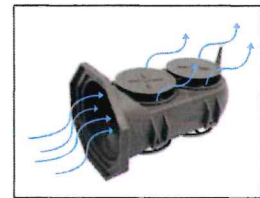
Temperature Range

-30°F to 40°F (-34°C to 4.4°C)

Kason® Intelli-Vent® Dual Airflow Design

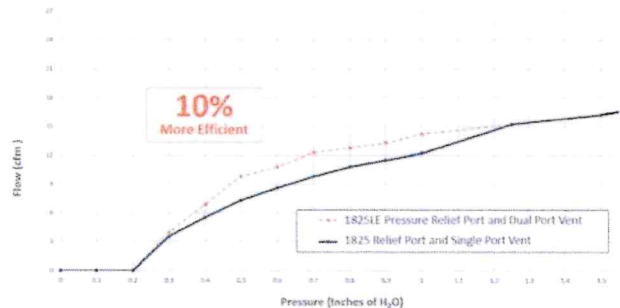


Intermediate Flow



High Flow

Airflow vs Pressure



INTRODUCING THE 24DT-SP-LT THERMOMETER & LIGHT SWITCH FOR WALK-INS



- ✓ LED Temp Display with °F/°C switch
- ✓ 1 second, 1 minute or 3 minute display update
- ✓ Light switch (15A) and SST J-Box Mount Cover
- ✓ 120V Direct Power
- ✓ Optional Battery back-up
- ✓ Save on installation costs



Now you can combine your Light Switch and Digital Thermometer in one easy to install package. The waterproof "elbow" engaged illuminated light switch allows operators to turn on the walk-in light easily, even when their hands are full. The industrial duty light switch is rated at 15A and includes optional gasket for outdoor use.

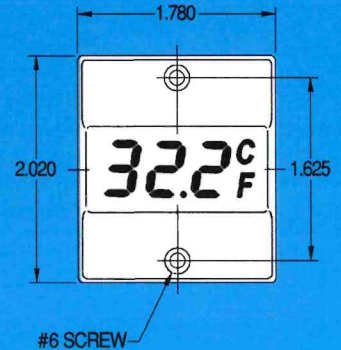
The continuation of the **evolution** in Digital Thermometry from Weiss Instruments, the leader in Temperature Measurement and Control.

Cat. No.	Description	Power	°F/°C	Update
24DT	0=Thermometer only	0=12Vac./DC 4=110Vac. 5=230Vac.	F=°F -40/230°F C=°C -40/110°C	0=1 sec. 1=1 min. 3=3 min.
Ex: 24DT-04F1	0 4 F 1 [0] - [110V] - [°F] - [1 min.]			
Cat. No.	Description	Power	°F/°C	Update
24DT	S=Switchplate	0=12Vac./DC 4=110Vac. 5=230Vac.	F=°F -40/230°F C=°C -40/110°C	0=1 sec. 1=1 min. 3=3 min.
Ex: 24DT-S4F1	S 4 F 1 [S] - [110V] - [°F] - [1 min.]			
Cat. No.	Description	Power	°F/°C	Update
24DT	L=Switchplate w/ Lighted Switch	0=12Vac./DC 4=110Vac. 5=230Vac.	F=°F -40/230°F C=°C -40/110°C	0=1 sec. 1=1 min. 3=3 min.
Ex: 24DT-L4F1	L 4 F 1 [L] - [110V] - [°F] - [1 min.]			

WEISS INSTRUMENTS INTRODUCES THE 24DT THERMOMETER



- ✓ LED Temp Display with °F/°C switch
- ✓ 1 second, 1 minute or 3 minute update
- ✓ Optional light switch and SST cover
- ✓ 120V Direct Power
- ✓ Optional battery back-up
- ✓ Popular back mounting
- ✓ Low Cost



First there was the *Ashcroft 2100E*, then came the *CPI TI-6000* followed by the *Miljoco ED175-2403 "Little Red"*. Now the ev•o•lu•tion is now complete with the introduction of the Weiss 24DT. The "smart thermometer" features leave the competition in the dark ages. Features such as disconnectable sensor power, smart updates, °F/°C switchable and no more transformers, make the 24DT the new choice in LED temperature indicators.

American Heritage Dictionary defines: ev•o•lu•tion - The gradual development of something into a more complex or better form.

Part Numbers				
Cat. No.	Description	Power	°F / °C	Update
24DT	0=Thermometer	0=12Vac./DC	F= °F -40/230 °F	0=1 Second
		4=120Vac.	C=°C -40/110 °C	1=1 Minute
		5=230Vac.		3=3 Minute
Ex: 24DT-04F1 - 0 4 F 1				
	0	120V	°F	1 Min.
Complete with 5 Ft. Sensor				



WEISS INSTRUMENTS, INC.

905 Waverly Ave., Holtsville, New York 11742

631-207-1200 • Fax 631.207.0900 • www.weissinstruments.com

Old World Craftsmanship . . . NEW WORLD TECHNOLOGY

Celebrating 125 Years • 1882 - 2007

1807L Series Walk-In Cooler/Freezer LED Fixtures

1807LW*



- Low profile high impact lens with anti-glare technology
- Wall mount design directs light into aisle for better visibility for product on shelves
- Junction box with 12 cubic inches of wiring volume with ground boss provided
- Exceeds Federal Energy Act requirements
- Rated for 50,000 hours of life
- Designed for wet location cooler/freezer environments
- Quick disconnect provided for easy replacement, or upgrade at end of life
- Certifications: UL for US and Canada, NSF, RoHS
- 3-year limited warranty on the light engine

1807LC*



Patent No.:
 US: D-748,841; D-748,317; D-728,151
 CA: 162,218; 162,219
 MX: 47,387; 47,388
 EM: 00143419-0002; 001434419-0001

Specifications

Material

Housing/Heatsink: Die-cast aluminum
 Lens: Polycarbonate

Electrical

120 V @ 50/60 Hz, 12 W, 0.1 A
 240 V @ 50/60 Hz, 13.3 W, 0.055 A
 +100 Lumens/Watt
 Color Temperature: 4000K

Temperature Rating

-20°F to 77°F (-29°C to 25°C)

Mounting

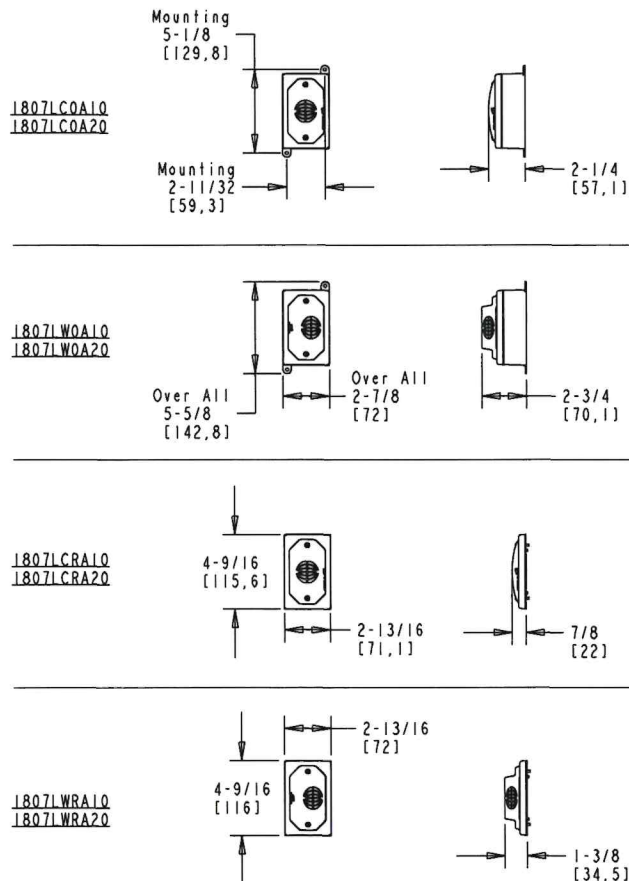
Surface mount

Safety Standards

RoHS
 NSF
 UL Listed US and Canada, File No. E333932

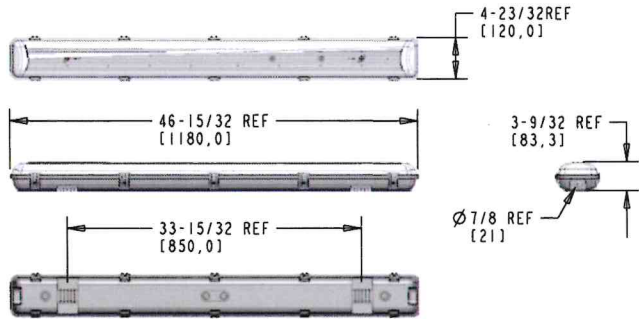
Prison Package

Tamper-resistant screw kit option available



Part No.	Description	Wgt./ Carton
11807LW0A10	LED Fixture, 120 V, 12 W, 4000K, Angled	0.75 lb (0.34 kg)
11807LC0A10	LED Fixture, 120 V, 12 W, 4000K, Domed	0.75 lb (0.34 kg)
11807LW0A20	LED Fixture, 240 V, 13.3 W, 4000K, Angled	0.75 lb (0.34 kg)
11807LC0A20	LED Fixture, 240 V, 13.3 W, 4000K, Domed	0.75 lb (0.34 kg)
11807LWRA10	LED Fixture, 120 V, 12 W, 4000K, Angled Recessed	0.35 lb (0.16 kg)
11807LCRA10	LED Fixture, 120 V, 12 W, 4000K, Domed Recessed	0.35 lb (0.16 kg)
11807LWRA20	LED Fixture, 240 V, 13.3 W, 4000K, Angled Recessed	0.35 lb (0.16 kg)
11807LCRA20	LED Fixture, 240 V, 13.3 W, 4000K, Domed Recessed	0.35 lb (0.16 kg)
91807000357	Tamper Resistant Screw Kit	





Specifications

Material

Housing: High-impact polycarbonate
Latches: Plastic/Polycarbonate

Size

Nominal Overall Dimensions:
46-15/32" L x 4-23/32" W x 3-9/32" H (1180 x 120 x 83.3 mm)

Electrical

Watts: 40 W
Volts: 120-277 V
Amps: 0.4 A @120 V
Power Factor: > 0.9
CRI: 84
Output: 4650 Lumens
116 Lumens/Watt
Color Temperature: 4000K

Certifications

UL approved for wet location
NSF listed component
IP-65

- 90-minute battery backup for walk-ins down to 32°F (0°C)
- 4650 lumens enables less fixtures to achieve desired light level
- No ultraviolet emission, does not attract insects
- Mercury free, LM-79 tested
- High-impact resistant polycarbonate enclosure
- Pre-installed Surface Mount LED Strips
- Easy retrofit for old lighting
- Rated 50,000 hour life
- 1-year limited warranty

1810LC4000-B LED Fixture Light Distribution

Height (in feet)	Average FC for Single Fixture Over Indicated Area			
	8' x 8'	12' x 12'	16' x 16'	20' x 20'
5	38	20.9	13.2	9.1
8	27.7	16.2	10.7	7.6
9	-	15.1	10.1	7.2
12	-	12.3	8.5	6.2
13	-	-	8.0	5.9
16	-	-	6.9	5.2
17	-	-	-	5.0
20	-	-	-	4.4

© 2025 Kason Industries, Inc. 1225 LIT 001



NSF International

789 N. Dixboro Road, Ann Arbor, MI 48105 USA

RECOGNIZES

Amerikooler, LLC

Hialeah, FL

AS COMPLYING WITH NSF/ANSI 7 AND ALL APPLICABLE REQUIREMENTS.
PRODUCTS APPEARING IN THE NSF OFFICIAL LISTING ARE
AUTHORIZED TO BEAR THE NSF MARK.



ANSI Accredited Program
PRODUCT CERTIFICATION
#2218
Certification Program
Accredited by the
American National
Standards Institute



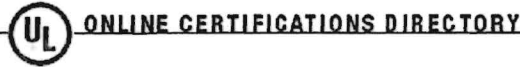
Certification Program
Accredited by the
Standards Council
of Canada

This certificate is the property of NSF International and must be returned upon request. This certificate remains valid as long as this client has products in Listing for the referenced standards. For the most current and complete Listing information, please access NSF's website (www.nsf.org).

A handwritten signature in black ink, appearing to read "S Krol".

May 22, 2017
Certificate# 02790 - 02

Sarah Krol
Global Managing Director, Food Safety Product Certification



**BLBT.R18276
Building Units**

[Page Bottom](#)

Building Units

[See General Information for Building Units](#)

AMERIKOOLER L L C
575 E 10th Ave
Hialeah, FL 33010-4639 USA

R18276

Panels consisting of foamed plastic core having metal facings on both sides.

4 in. Maximum Thickness, "Amerikooler-E"

	Core Material	Painted or Unpainted Galvanized or Galvalume or Stainless Steel or Aluminum Faced Panel
Flame spread	20#	140
Smoke developed	300#	Over 500

Flame spread and smoke developed recorded while material remained in original test position. Ignition of molten residue on the furnace floor resulted in flame classification of 180 and smoke developed classification of over 500.

4 in. Maximum Thickness, "Amerikooler-X" Painted or Unpainted Galvanized or Stainless Steel or Unpainted Galvalume or Aluminum Faced Panel		
	Core Material	Finished Panel
Flame spread	15#	50-115
Smoke developed	175#	Over 500

Flame spread and smoke developed recorded while material remained in original test position. Ignition of molten residue on the furnace floor resulted in flame classification of 125 and smoke developed classification of over 500.

[Last Updated](#) on 2017-04-27

[Questions?](#)

[Print this page](#)

[Terms of Use](#)

[Page Top](#)

© 2017 UL LLC

The appearance of a company's name or product in this database does not in itself assure that products so identified have been manufactured under UL's Follow-Up Service. Only those products bearing the UL Mark should be considered to be Certified and covered under UL's Follow-Up Service. Always look for the Mark on the product.

UL permits the reproduction of the material contained in the Online Certification Directory subject to the following conditions: 1. The Guide Information, Assemblies, Constructions, Designs, Systems, and/or Certifications (files) must be presented in their entirety and in a non-misleading manner, without any manipulation of the data (or drawings). 2. The statement "Reprinted from the Online Certifications Directory with permission from UL" must appear adjacent to the extracted material. In addition, the reprinted material must include a copyright notice in the following format: "© 2017 UL LLC".

**FDIT.E122647
Door Panel Assemblies**[Page Bottom](#)

Door Panel Assemblies[See General Information for Door Panel Assemblies](#)**AMERIKOOLER L L C**
575 E 10th Ave
Hiialeah, FL 33010-4639 USA

E122647

Walk-in door panel assemblies, Model(s) C3478, F3478[Last Updated](#) on 2017-04-27

[Questions?](#)[Print this page](#)[Terms of Use](#)[Page Top](#)

© 2017 UL LLC

The appearance of a company's name or product in this database does not in itself assure that products so identified have been manufactured under UL's Follow-Up Service. Only those products bearing the UL Mark should be considered to be Certified and covered under UL's Follow-Up Service. Always look for the Mark on the product.

UL permits the reproduction of the material contained in the Online Certification Directory subject to the following conditions: 1. The Guide Information, Assemblies, Constructions, Designs, Systems, and/or Certifications (files) must be presented in their entirety and in a non-misleading manner, without any manipulation of the data (or drawings). 2. The statement "Reprinted from the Online Certifications Directory with permission from UL" must appear adjacent to the extracted material. In addition, the reprinted material must include a copyright notice in the following format: "© 2017 UL LLC".

ASTM E 84

Standard test method for surface burning characteristics of building materials.

The flame spread Index and Smoke Developed Index values obtained by the ASTM E 84 test are used by code officials and regulatory agencies in the acceptance of interior finish materials for various applications. The most widely accepted classification system is described in the National Fire Protection Association publication NFPA 101 *Life Safety Code*

1. 2006 International Building Code

a. Section 803 Wall and Ceiling Finishes, Paragraph 803.1 General states, "Interior wall and ceiling finishes shall be classified in accordance with ASTM E- 84. Such interior finish materials shall be grouped in the following classes in accordance with their flame spread and smoke-developed indexes.

i. Class A: Flame Spread 0-25; smoke-developed 0-450

ii. Class B: Flame Spread 26-75; smoke-developed 0-450

iii. Class C: Flame Spread 76-200; smoke-developed 0-450

Class A, B, and C correspond to type I, II, and III respectively in other codes such as SBCCI, BOCA, ICBO. They do not preclude a material being otherwise classified by the authority of jurisdiction.

2. NFPA 101®, Life Safety Code®

a. Chapter 10 Interior Finish, Contents, and Furnishings, Paragraph 10.2.3 Interior Wall or Ceiling Finish Testing and Classification states, "Interior wall or ceiling finish that is required elsewhere in this Code to be Class A, Class B, or Class C shall be classified based on test results from NFPA 255, ASTM E-84, or UL 723."

CERTIFICATE OF COMPLIANCE

Certificate Number 20170728-R18276
Report Reference R18276-20170727
Issue Date 2017-JULY-28

Issued to: AMERIKOOLER L L C
575 E 10th Ave, Hialeah FL 33010-4639

**This is to certify that
representative samples of**

BUILDING UNITS

Model: "Amerikooler-X", is a building unit consisting of an extruded polystyrene foamed plastic core faced on both sides with painted or unpainted, embossed or smooth galvanized or stainless steel or unpainted, embossed or smooth galvalume.

Have been investigated by UL in accordance with the Standard(s) indicated on this Certificate.

Standard(s) for Safety: UL723, Surface Burning Characteristics for Building Materials

Additional Information: See the UL Online Certifications Directory at www.ul.com/database for additional information

Only those products bearing the UL Certification Mark should be considered as being covered by UL's Certification and Follow-Up Service.

Look for the UL Certification Mark on the product.



Bruce Mahrenholz, Director North American Certification Program
UL LLC

Any information and documentation involving UL Mark services are provided on behalf of UL LLC (UL) or any authorized licensee of UL. For questions, please contact a local UL Customer Service Representative at <http://ul.com/about/locations/>





DEPARTMENT OF REGULATORY AND ECONOMIC RESOURCES
 BOARD AND CODE ADMINISTRATION DIVISION

MIAMI-DADE COUNTY
 PRODUCT CONTROL SECTION
 11805 SW 26 Street, Room 208
 Miami, Florida 33175-2474
 T (786) 315-2590 F (786) 315-2599

www.miamidade.gov/economy

NOTICE OF ACCEPTANCE (NOA)

Amerikooler LLC
575 E 10 Avenue
Hialeah, FL 33010

SCOPE:

This NOA is being issued under the applicable rules and regulations governing the use of construction materials. The documentation submitted has been reviewed and accepted by Miami-Dade County RER- Product Control Section to be used in Miami Dade County and other areas where allowed by the Authority Having Jurisdiction (AHJ).

This NOA shall not be valid after the expiration date stated below. The Miami-Dade County Product Control Section (In Miami Dade County) and/or the AHJ (in areas other than Miami Dade County) reserve the right to have this product or material tested for quality assurance purposes. If this product or material fails to perform in the accepted manner, the manufacturer will incur the expense of such testing and the AHJ may immediately revoke, modify, or suspend the use of such product or material within their jurisdiction. RER reserves the right to revoke this acceptance if it is determined by Miami-Dade County Product Control Section that this product or material fails to meet the requirements of the applicable building code.

This product is approved as described herein and has been designed to comply with the High Velocity Hurricane Zone of the Florida Building Code.

DESCRIPTION: Walk-In Cooler / Freezer

APPROVAL DOCUMENT: Drawing No. KC23-0225, titled "Walk-In Cooler / Freezer", sheets 1 through 7 of 7, prepared by Knezevich Consulting, LLC, dated July 17, 2023, signed and sealed by J. W. Knezevich, P.E., on November 07, 2023, bearing the Miami-Dade County Product Control Revision stamp with the Notice of Acceptance number and the expiration date by the Miami-Dade County Product Control Section.

MISSILE IMPACT RATING: Large and Small Missile Impact Resistant

LABELING: Each unit shall bear a permanent label with the manufacturer's name or logo, city, state and the following statement: "Miami-Dade County Product Control Approved", unless otherwise noted herein.

RENEWAL of this NOA shall be considered after a renewal application has been filed and there has been no change in the applicable building code negatively affecting the performance of this product.

TERMINATION of this NOA will occur after the expiration date or if there has been a revision or change in the materials, use, and/or manufacture of the product or process. Misuse of this NOA as an endorsement of any product, for sales, advertising or any other purposes shall automatically terminate this NOA. Failure to comply with any section of this NOA shall be cause for termination and removal of NOA.

ADVERTISEMENT: The NOA number preceded by the words Miami-Dade County, Florida, and followed by the expiration date may be displayed in advertising literature. If any portion of the NOA is displayed, then it shall be done in its entirety.

INSPECTION: A copy of this entire NOA shall be provided to the user by the manufacturer or its distributors and shall be available for inspection at the job site at the request of the Building Official.

This NOA revises NOA #22-0914.05 and consists of this page 1, evidence submitted pages E-1 and E-2 as well as approval document mentioned above.

The submitted documentation was reviewed by **Helmy A. Makar, P.E., M.S.**



Helmy A. Makar
 02/22/24

NOA No. 23-1117.03
 Expiration Date: 11/23/2027
 Approval Date: 02/22/2024

CITY OF HOUSTON

Houston Public Works
Houston Permitting Center Division


CERTIFICATE OF APPROVAL

THIS CERTIFIES THAT AMERIKOOLER INC.
LOCATED AT HIALEAH, FL IS APPROVED BY THE CITY BUILDING OFFICIAL,
CITY OF HOUSTON UNDER THE PROVISIONS OF SECTION 1704.2.2 OF THE
HOUSTON BUILDING CODE AS A FABRICATOR OF WALK-IN COOLERS AND FREEZERS

DATE: 06/14/2023

VALID UNTIL: 06/14/2024

ANNUAL RENEWAL REQUIRED TO BE VALID AFTER DATE OF ISSUE



FOR CITY BUILDING OFFICIAL

REGISTRATION NUMBER: 694

This certificate is the property of the City of Houston and may be revoked for any of the causes set forth in the rules and procedures for approval of fabricators and certifying agencies.

 **HOUSTON**
PUBLIC WORKS

CITY OF LOS ANGELES

CALIFORNIA



KAREN BASS
MAYOR

BOARD OF
BUILDING AND SAFETY
COMMISSIONERS

JAVIER NUNEZ
PRESIDENT

ELVIN W. MOON
VICE PRESIDENT

JOSELYN GEAGA-ROSENTHAL
LAUREL GILLETTE
GEORGE HOVAGUIMIAN

DEPARTMENT OF
BUILDING AND SAFETY
201 NORTH FIGUEROA STREET
LOS ANGELES, CA 90012

OSAMA YOUNAN, P.E.
GENERAL MANAGER
SUPERINTENDENT OF BUILDING

JOHN WEIGHT
EXECUTIVE OFFICER

Amerikooler, Inc.
575 East 10th Avenue
Hialeah, FL 33010

Research Report: RR 26189
(CSI #13030)

Attn: Juan Madariaga
(800) 627-5665

Expires: March 1, 2025
Issued Date: February 1, 2023
Code: 2020 LABC

GENERAL APPROVAL – Renewal – Amerikooler, Inc. Refrigeration Panels for Walk-In Coolers and Freezers.

DESCRIPTION

The panels are manufactured utilizing 26 gauge galvanized steel skin or 22 gauge stainless steel (Type 304) with XPS Polystyrene foam core. The panels are fabricated in a thickness of 4 inches with typical width of 47 inches and connected with Interlocking male/female cam lock assembly with ABS casing, ANSI 1018 Steel Pin and Hook Utilizing an ANSI 1095 RC41047 steel pin mechanism and a ZAMAK #3 cam.

Flame spread and smoke development ratings for the panels per ASTM E84 are 15 and 450 respectively. The panel core material has a density of 2.0 pcf.

The panels are approved as structural wall and ceiling panels for interior and exterior, non-fire-rated walk-in coolers and freezers. The allowable loads for exterior panels subjected to wind loads shall be evaluated on a case by case basis.

Amerikooler, Inc. refrigeration panels for walk-in coolers and freezers described above are subjected to the following conditions:

1. The panels are approved for use in accordance with Section 2603 of the 2020 Los Angeles City Building Code and shall comply with all requirements therein.
2. Use of the panels shall be limited to locations where combustible materials/construction is permitted by the 2020 Los Angeles City Building Code.

Amerikooler, LLC

RE: Walk-In Cooler and Freezer Panels

3. Panels shall be fabricated in the shop of a licensed fabricator approved by the Los Angeles City Building Department. Each panel shall be identified by the manufacturer's name. Fabrication in unlicensed shops will invalidate this approval.
4. Materials for the panel shall be as specified in the DESCRIPTION section above. Test data by an approved testing agency shall be submitted to the Department upon request to verify materials' specifications.
5. Complete plans and design calculations bearing the stamp and signature of a civil or structural engineer or architect registered in the State of California, shall be submitted to the structural plan check engineer for approval of each job.
6. An approved fire retardant roof covering (class "A" or "B") shall be placed over the panel when used as exterior roof panels.
7. No permanent loads, equipment or storage loads shall be carried by the ceiling/roof panels with the exception for the evaporator. If evaporator is supported from the top panel, it must be accounted for in calculations for ceiling panel loads. For equipment loads, calculations demonstrating that the applied loads are less than the maximum allowable loads must be submitted to the structural plan check section for each project. The calculations must be prepared by a California registered engineer or architect.
8. A factor of safety of 3.0 is included in all the allowable loads listed below. Design of buildings utilizing the panels shall be in accordance with the requirements of the 2020 Los Angeles Building Code and the design data specified.
9. The maximum allowable ceiling spans shall be as follows:

		26 ga. Galvanized Steel Skin Transverse Span Chart									
		CEILINGS									
		Allowable Imposed Load (psf)									
Panel Thickness	Dead Load (psf)	10	20	30	40	50	60	70	80	90	100
4"	2.3	19'-3"	13'-10"	11'-5"	10'-0"	9'-0"	8'-3"	7'-8"	7'-3"	6'-10"	6'-6"



Oregon

Tina Kotek, Governor

Department of Consumer and Business Services
Building Codes Division
1535 Edgewater Street NW
P.O. Box 14470
Salem, OR 97309-0404
503-378-4133
Fax: 503-378-2322
Oregon.gov/BCD

December 22, 2025

REGISTRATION ENCLOSED

AMERIKOOLER INC
575 EAST 10TH AVE
HIALEAH FL 33010

Registration Information

Attached is your State of Oregon Registration as a PFC-Prefab Components.

Registration Ltr.dot

State of Oregon Registration

PFC-Prefab Components

Building Codes Division

PO Box 14470
Salem, OR 97309-0404
503-378-4133 FAX 503-378-2322

License number: PFC688
Effective date: 01/01/2026
Expiration date: 12/31/2026

Licensee: AMERIKOOLER INC

Address: 575 EAST 10TH AVE
HIALEAH FL 33010

NON-TRANSFERABLE



August 23, 2024

Product Compliance with 2021 International Energy Conservation Code (IECC) C403.11 Sub-Part C403.11.2 (1) (2) (3) (Walk -In Coolers and Freezers) In accordance to with Subpart R of the DOE 10 CFR 431

C403.10.2.1 (1) – Walk-in Cooler & Freezer Display Door Efficiency (Passage) Display is a 12” x 12” view window -Independent Lab test data.

- 1) Passage Door Medium Temperature (PD, M) Maximum Energy Consumption kWh/day = 0.23
- 2) Passage Door Low Temperature (PD, L) Maximum Energy Consumption kWh/day = 0.43

C403.11.2.1 (2) – Walk-in Cooler & Freezer Non-Display Door Efficiency Display - Independent Lab test data

- 3) Passage Door Medium Temperature (PD, M) Maximum Energy Consumption kWh/day = 0.18.
- 4) Passage Door Low Temperature (PD, L) Maximum Energy Consumption kWh/day = 0.16

C403.10.2.1 (3) – Walk-in Cooler & Freezer Refrigeration Systems Efficiency Requirements *

Compliance Date	Product Type	Unit Capacity Range (BTU/h)	Minimum AWEF (BTU/W-h)
January 1 st , 2020	Dedicated CDU & Packaged Systems Medium Temp Indoor	All	5.61
	Dedicated CDU & Packaged Systems Medium Temp Outdoor	All	7.6
July 10 th , 2020	Dedicated CDU & Packaged Systems Low Temp Indoor	0-6,499	1.81 to 2.39
	Dedicated CDU & Packaged Systems Low Temp Indoor	6,500 +	2.4
	Dedicated CDU & Packaged Systems Low Temp Outdoor	0-6,499	2.73 to 3.14
	Dedicated CDU & Packaged Systems Low Temp Outdoor	6,500 +	3.15
	Unit Cooler – Medium Temp	All	9
	Unit Cooler – Low Temp	0-14,999	3.91 to 4.14
	Unit Cooler – Low Temp	15,000 +	4.15

*Data from Heatcraft Refrigeration Products.

Products and Applications

- 1) Condenser Unit: Contains compressors and condenser coil.
- 2) Unit Cooler: Contains evaporator coil and air mover.
- 3) Packaged Unit : Standalone, self-contained refrigeration system.
- 4) Medium Temperature : Applications where box temperature is 32°F and above.
- 5) Low Temperature: Applications where box temperature is less than 32°F.



Additional Energy requirements stated in 10 CFR Part 431.

1. Product is provided with spring loaded automatic door closers providing 15 LB. of closing force at strike to acquire full closure with 1”.
2. Door openings are provided with Vinyl Material Strip Curtains that are NSF approved, and spring action door hinges to provide secure sealing.
3. Wall, Ceiling and Door Insulation thermal resistance of at least R -25 for coolers and R-32 for freezers per ASTM C518.
4. Floor Insulation of at least R – 28. Per ASTM C518.
5. Evaporator Motors under 1 HP and less than 460 volts use:
 - a. Electronically commutated motors (brushless DC motors) or 3-phase motors.
6. Condenser fan motor under 1 HP use:
 - a. Electronically commutated motors (brushless DC motors)
 - b. Permanent Split Capacitors motors or 3 Phase.
7. Uses LED light efficacy of 100+ Lumens / Watt.
8. Door view windows utilize:
 - a. Double -Paine glass with heated glass and gas or
 - b. Triple-pane glass with heated glass or gas filled.
9. All Freezer Doors or Coolers requiring antisweat devices are sized and provided with an internally routed door frame heater wire. The circuit is also equipped with a thermocouple that provides temperature on/off control. The power draw required to obtain optimum conditions around the door opening perimeter is designed not to exceed 7.1 W/ft for freezers and 3.0 W/ft. for coolers.

Juan Madariaga
COO

