

CHANNEL®



DON'T

CHANNEL[®]



SHELVING SOLUTIONS



DON'T

CHANNEL®



ADJUSTABLE SHELVING

Channel's adjustable shelving options offer a durable, heavy-duty rust proof and efficient solution for your storage applications.

- Standard depths are 20"D and 24"D.
- Standard height is 72"H.
- Standard widths are: 36", 42", 48", 54" & 60"
- Purchased per shelf
- Requires a (set of 4) uprights (sold separately).

Custom Sizes Available



TA2036



TA2042



TA2048



TA2054



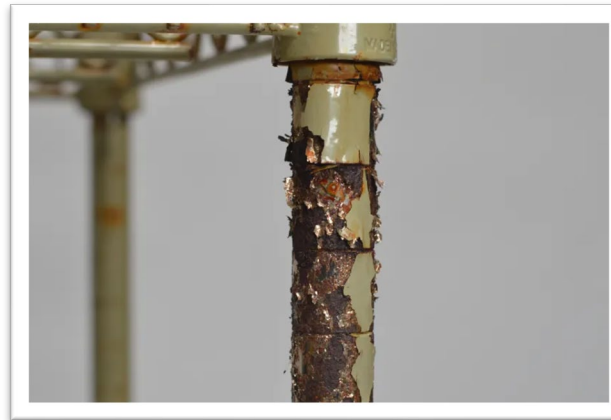
TA2060



CHANNEL®



TRADITIONAL WIRE SHELVING





CHANNEL®



Wire Shelving vs. Channel Adjustable Aluminum Shelving

	Wire	CHANNEL
Depth	18 & 24	20 & 24
Height	63 & 74	72
Heavy-Duty		✓
Aluminum Construction		✓
Coated Steel Material	✓	
Guaranteed NOT to Rust		✓
Coating will Crack and / or Peel	✓	
Difficult to Clean	✓	
Cheap Plastic Parts	✓	
Stainless Steel Set Screw		✓
Various Shelf Styles		✓
Price Competitive	✓	✓
Value Added Soluion for Customer		✓
Custom Sizes Avalable		✓



ADJUSTABLE SHELVING

Channel's adjustable shelving options offer a durable, heavy-duty rust proof and efficient solution for your storage applications.

Where and Why

- Walk-in coolers.
- Prep areas.
- Storage areas.
- Industrial applications.
- Janitorial applications.
- Residential use.

- Better organization and appearance.
- Durability & functionality.
- Heavy-Duty design.
- Guaranteed against rust
- Ease of cleaning
- Custom Sizes Available
- Better value for the customer



TA2036



TA2042



TA2048



TA2054



TA2060