



The SmartStone System[®]

**EXCLUSIVELY DESIGNED TO WORK WITH
SPRING USA:**

- HIDDEN INDUCTION RANGES
- FROST TOPS
- EXPOSED RANGES

TRIVETLESS SYSTEM - NO EXTRA PIECES
TO STOCK OR LOSE

DURABLE - STANDS UP TO THE RIGORS
OF A COMMERCIAL SETTING

NON-POROUS & NSF APPROVED- EASY
TO CLEAN AND MAINTAIN

SCRATCH RESISTANT - ONE OF THE
HARDEST MATERIALS AVAILABLE IN THE
MARKET

Spring[™]
USA

CHOOSE FROM 24 DIFFERENT SMARTSTONE[®] COLORS:



Anchor



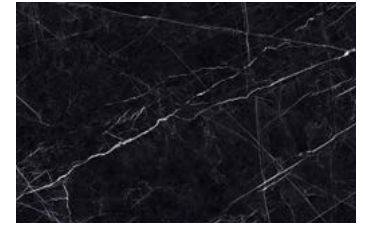
Cottage



Java



Oatmeal



Slate



Bisque



Fine White



Macchiato



Onyx



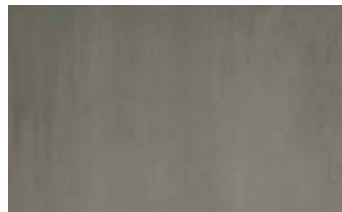
Snow



Cavern



Fossil



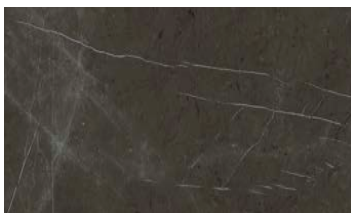
Metro



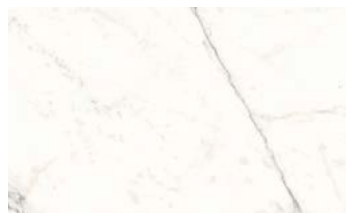
Sea Salt



Summit



Charcoal



Glacier



Mist



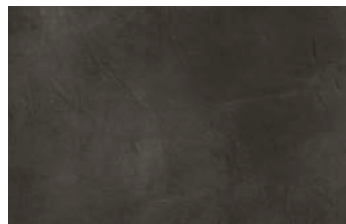
Seashell



Wolf Grey



Coastal



Horizon



Monument



Shoreline

Spring[™]
USA



The SmartStone® Collection

- All stone is offered in a 120" by 60" slab that can be cut and customized to preferred dimensions
- Stone has a thickness of 0.48"(12mm)
- Offered in a variety of finishes such as honed, pre-polished, or polished

Stone Finishes

Anchor- honed or pre-polished

Bisque- honed

Cavern-honed

Charcoal-honed or polished

Coastal-honed

Cottage-honed or polished

Fine White-polished

Fossil-honed or polished

Glacier-honed or polished

Horizon-honed

Java-honed

Macchiato-honed or polished

Metro-honed or pre-polished

Mist-honed or polished

Monument-honed or polished

Oatmeal-honed or polished

Onyx-honed

Sea Salt-honed or polished

Seashell-honed or polished

Shoreline-honed

Slate-honed or polished

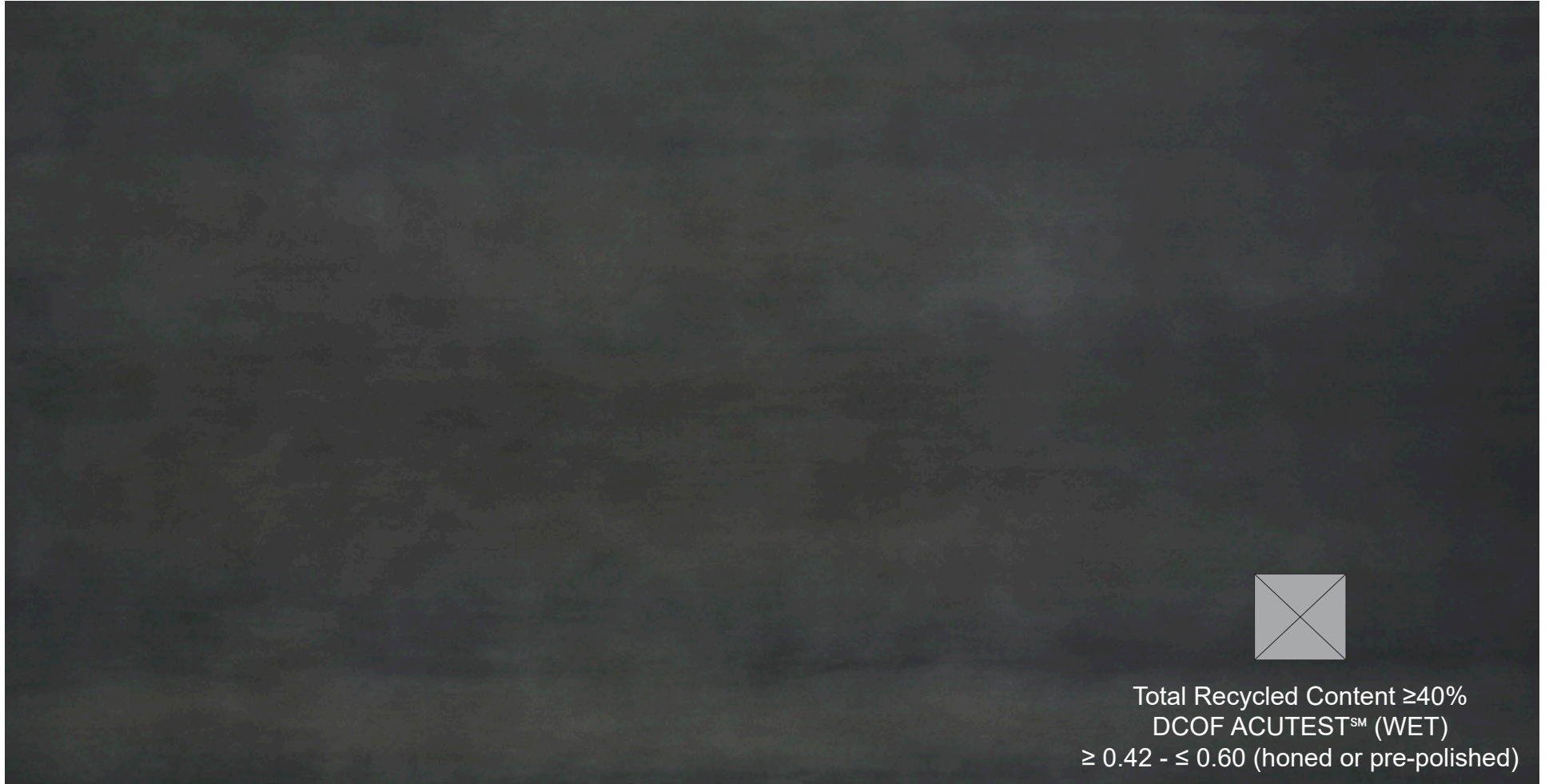
Snow-honed or polished

Summit-polished

Wolf Grey-honed

Anchor

When preparing the order, the surfaces are selected randomly, therefore the continuity of veins is not guaranteed



<u>SIZE</u>	<u>THICKNESS</u>	<u>FINISH</u>
120"x60"	0.48"	honed or pre-polished

Our products are the result of the bond between earth and fire. The continuity of veins between slabs is subject to tolerance typical of natural materials

Bisque

When preparing the order, the surfaces are selected randomly, therefore the continuity of veins is not guaranteed



Total Recycled Content $\geq 40\%$
DCOF ACUTESTSM (WET)
 $\geq 0.42 - \leq 0.60$ (honed)

<u>SIZE</u>	<u>THICKNESS</u>	<u>FINISH</u>
120"x60"	0.48"	honed

Our products are the result of the bond between earth and fire. The continuity of veins between slabs is subject to tolerance typical of natural materials

Cavern

When preparing the order, the surfaces are selected randomly, therefore the continuity of veins is not guaranteed

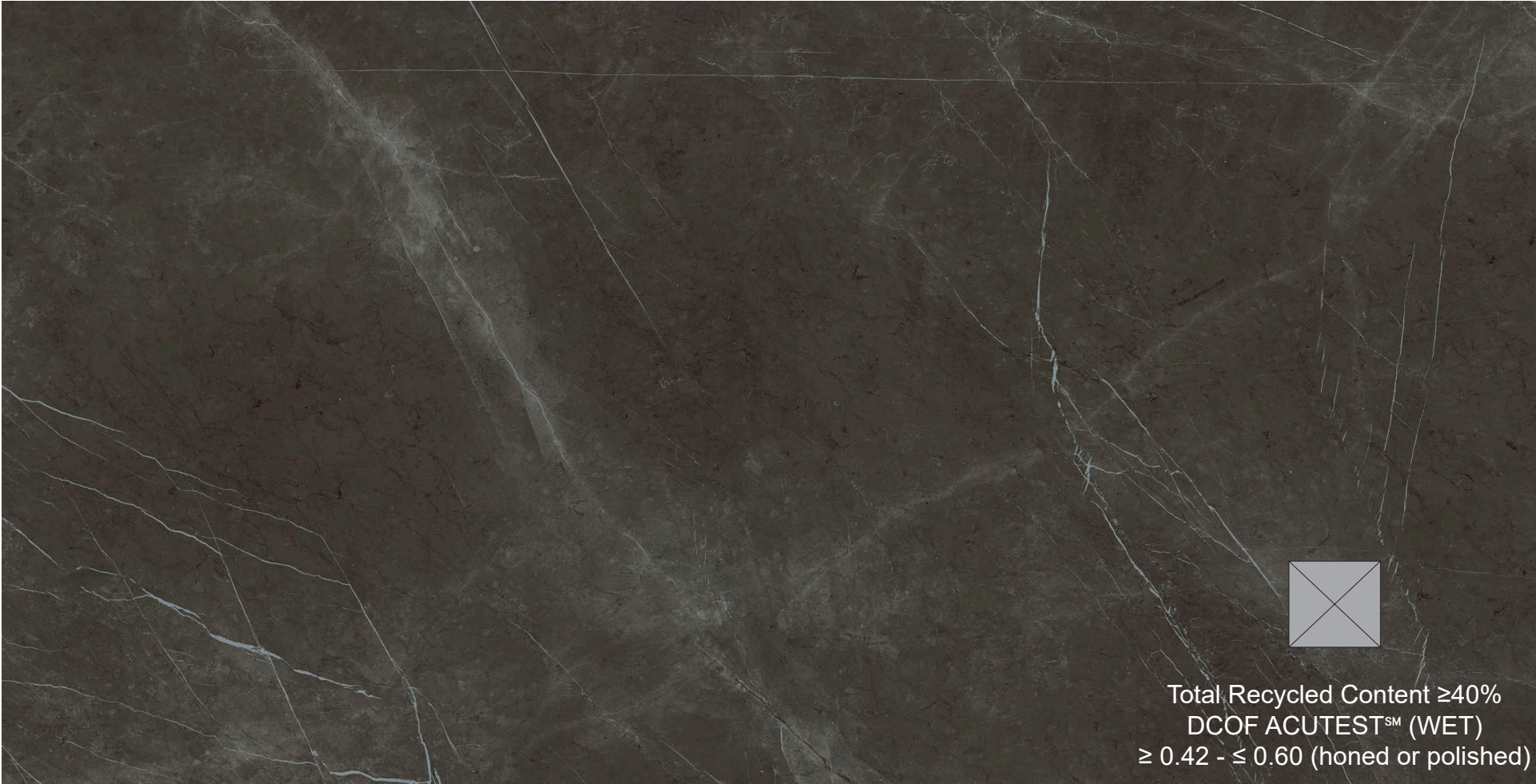


<u>SIZE</u>	<u>THICKNESS</u>	<u>FINISH</u>
120"x60"	0.48"	honed

Our products are the result of the bond between earth and fire. The continuity of veins between slabs is subject to tolerance typical of natural materials

Charcoal

When preparing the order, the surfaces are selected randomly, therefore the continuity of veins is not guaranteed



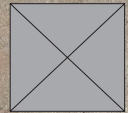
Total Recycled Content $\geq 40\%$
DCOF ACUTESTSM (WET)
 $\geq 0.42 - \leq 0.60$ (honed or polished)

<u>SIZE</u>	<u>THICKNESS</u>	<u>FINISH</u>
120"x60"	0.48"	honed or polished

Our products are the result of the bond between earth and fire. The continuity of veins between slabs is subject to tolerance typical of natural materials

Coastal

When preparing the order, the surfaces are selected randomly, therefore the continuity of veins is not guaranteed



Total Recycled Content $\geq 40\%$
DCOF ACUTESTSM (WET)
 $\geq 0.42 - \leq 0.60$ (honed)

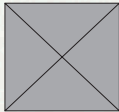
<u>SIZE</u>	<u>THICKNESS</u>	<u>FINISH</u>
-------------	------------------	---------------

120"x60"	0.48"	honed
----------	-------	-------

Our products are the result of the bond between earth and fire. The continuity of veins between slabs is subject to tolerance typical of natural materials

Cottage

When preparing the order, the surfaces are selected randomly, therefore the continuity of veins is not guaranteed



Total Recycled Content $\geq 40\%$
DCOF ACUTESTSM (WET)
 $\geq 0.42 - \leq 0.60$ (honed or polished)

<u>SIZE</u>	<u>THICKNESS</u>	<u>FINISH</u>
120"x60"	0.48"	honed or polished

Our products are the result of the bond between earth and fire. The continuity of veins between slabs is subject to tolerance typical of natural materials

Fine White

When preparing the order, the surfaces are selected randomly, therefore the continuity of veins is not guaranteed



Total Recycled Content $\geq 40\%$
DCOF ACUTESTSM (WET)
 $\geq 0.42 - \leq 0.60$ (polished)

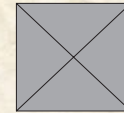
<u>SIZE</u>	<u>THICKNESS</u>	<u>FINISH</u>
-------------	------------------	---------------

120"x60"	0.48"	polished
----------	-------	----------

Our products are the result of the bond between earth and fire. The continuity of veins between slabs is subject to tolerance typical of natural materials

Fossil

When preparing the order, the surfaces are selected randomly, therefore the continuity of veins is not guaranteed



Total Recycled Content $\geq 40\%$
DCOF ACUTESTSM (WET)
 $\geq 0.42 - \leq 0.60$ (honed or polished)

<u>SIZE</u>	<u>THICKNESS</u>	<u>FINISH</u>
120"x60"	0.48"	honed or polished

Our products are the result of the bond between earth and fire. The continuity of veins between slabs is subject to tolerance typical of natural materials

Glacier

When preparing the order, the surfaces are selected randomly, therefore the continuity of veins is not guaranteed



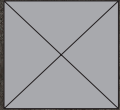
Total Recycled Content $\geq 40\%$
DCOF ACUTESTSM (WET)
 $\geq 0.42 - \leq 0.60$ (honed or polished)

<u>SIZE</u>	<u>THICKNESS</u>	<u>FINISH</u>
120"x60"	0.48"	honed or polished

Our products are the result of the bond between earth and fire. The continuity of veins between slabs is subject to tolerance typical of natural materials

Horizon

When preparing the order, the surfaces are selected randomly, therefore the continuity of veins is not guaranteed



Total Recycled Content $\geq 40\%$
DCOF ACUTESTSM (WET)
 $\geq 0.42 - \leq 0.60$ (honed)

<u>SIZE</u>	<u>THICKNESS</u>	<u>FINISH</u>
120"x60"	0.48"	honed

Our products are the result of the bond between earth and fire. The continuity of veins between slabs is subject to tolerance typical of natural materials

Java

When preparing the order, the surfaces are selected randomly, therefore the continuity of veins is not guaranteed



<u>SIZE</u>	<u>THICKNESS</u>	<u>FINISH</u>
-------------	------------------	---------------

120"x60"	0.48"	honed
----------	-------	-------

Our products are the result of the bond between earth and fire. The continuity of veins between slabs is subject to tolerance typical of natural materials

Macchiato

When preparing the order, the surfaces are selected randomly, therefore the continuity of veins is not guaranteed



<u>SIZE</u>	<u>THICKNESS</u>	<u>FINISH</u>
120"x60"	0.48"	honed or polished

Our products are the result of the bond between earth and fire. The continuity of veins between slabs is subject to tolerance typical of natural materials

Metro

When preparing the order, the surfaces are selected randomly, therefore the continuity of veins is not guaranteed



Total Recycled Content $\geq 40\%$
DCOF ACUTESTSM (WET)
 $\geq 0.42 - \leq 0.60$ (honed or pre-polished)

<u>SIZE</u>	<u>THICKNESS</u>	<u>FINISH</u>
120"x60"	0.48"	honed or pre-polished

Our products are the result of the bond between earth and fire. The continuity of veins between slabs is subject to tolerance typical of natural materials

Mist

When preparing the order, the surfaces are selected randomly, therefore the continuity of veins is not guaranteed



Total Recycled Content $\geq 40\%$
DCOF ACUTESTSM (WET)
 $\geq 0.42 - \leq 0.60$ (honed or polished)

<u>SIZE</u>	<u>THICKNESS</u>	<u>FINISH</u>
120"x60"	0.48"	honed or polished

Our products are the result of the bond between earth and fire. The continuity of veins between slabs is subject to tolerance typical of natural materials

Monument

When preparing the order, the surfaces are selected randomly, therefore the continuity of veins is not guaranteed



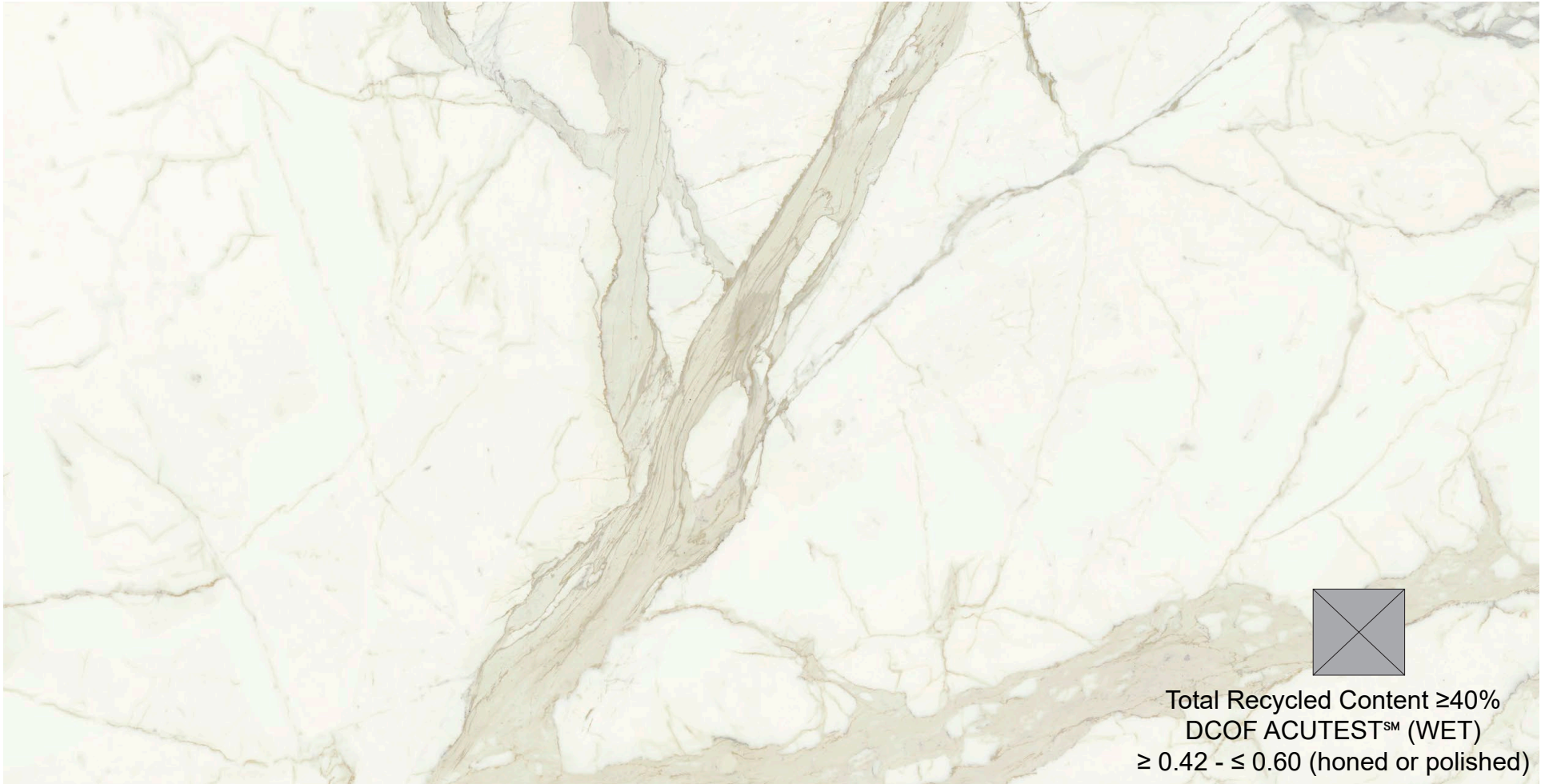
Total Recycled Content $\geq 40\%$
DCOF ACUTESTSM (WET)
 $\geq 0.42 - \leq 0.60$ (honed or polished)

<u>SIZE</u>	<u>THICKNESS</u>	<u>FINISH</u>
120"x60"	0.48"	honed or polished

Our products are the result of the bond between earth and fire. The continuity of veins between slabs is subject to tolerance typical of natural materials

Oatmeal

When preparing the order, the surfaces are selected randomly, therefore the continuity of veins is not guaranteed



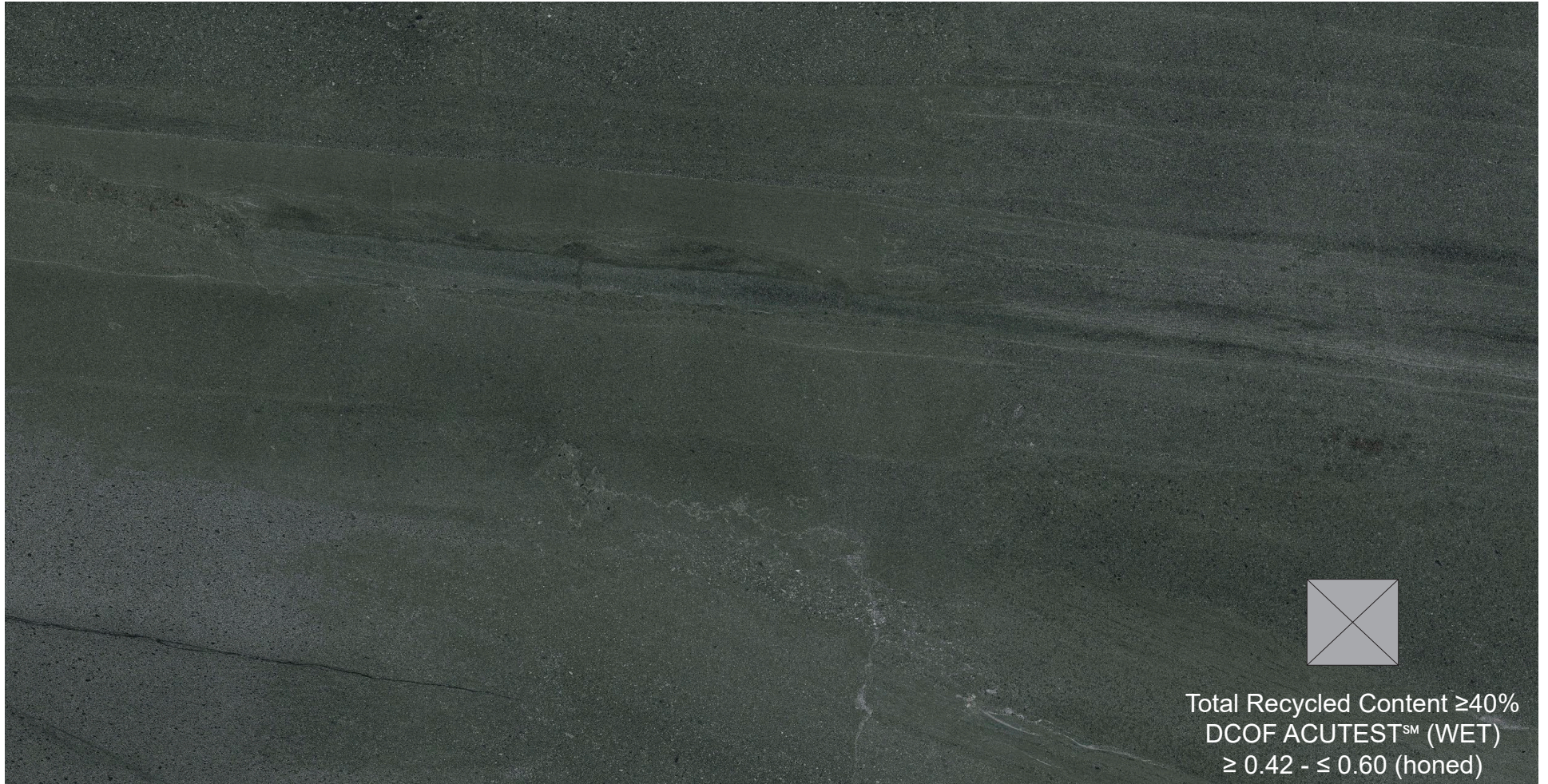
Total Recycled Content $\geq 40\%$
DCOF ACUTESTSM (WET)
 $\geq 0.42 - \leq 0.60$ (honed or polished)

<u>SIZE</u>	<u>THICKNESS</u>	<u>FINISH</u>
120"x60"	0.48"	honed or polished

Our products are the result of the bond between earth and fire. The continuity of veins between slabs is subject to tolerance typical of natural materials

Onyx

When preparing the order, the surfaces are selected randomly, therefore the continuity of veins is not guaranteed



<u>SIZE</u>	<u>THICKNESS</u>	<u>FINISH</u>
-------------	------------------	---------------

120"x60"	0.48"	honed
----------	-------	-------

Our products are the result of the bond between earth and fire. The continuity of veins between slabs is subject to tolerance typical of natural materials

Sea Salt

When preparing the order, the surfaces are selected randomly, therefore the continuity of veins is not guaranteed



Total Recycled Content $\geq 40\%$
DCOF ACUTESTSM (WET)
 $\geq 0.42 - \leq 0.60$ (honed or polished)

<u>SIZE</u>	<u>THICKNESS</u>	<u>FINISH</u>
120"x60"	0.48"	honed or polished

Our products are the result of the bond between earth and fire. The continuity of veins between slabs is subject to tolerance typical of natural materials

Seashell

When preparing the order, the surfaces are selected randomly, therefore the continuity of veins is not guaranteed



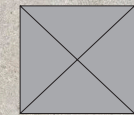
Total Recycled Content $\geq 40\%$
DCOF ACUTESTSM (WET)
 $\geq 0.42 - \leq 0.60$ (honed or polished)

<u>SIZE</u>	<u>THICKNESS</u>	<u>FINISH</u>
120"x60"	0.48"	honed or polished

Our products are the result of the bond between earth and fire. The continuity of veins between slabs is subject to tolerance typical of natural materials

Shoreline

When preparing the order, the surfaces are selected randomly, therefore the continuity of veins is not guaranteed



Total Recycled Content $\geq 40\%$
DCOF ACUTESTSM (WET)
 $\geq 0.42 - \leq 0.60$ (honed)

<u>SIZE</u>	<u>THICKNESS</u>	<u>FINISH</u>
120"x60"	0.48"	honed

Our products are the result of the bond between earth and fire. The continuity of veins between slabs is subject to tolerance typical of natural materials

Slate

When preparing the order, the surfaces are selected randomly, therefore the continuity of veins is not guaranteed

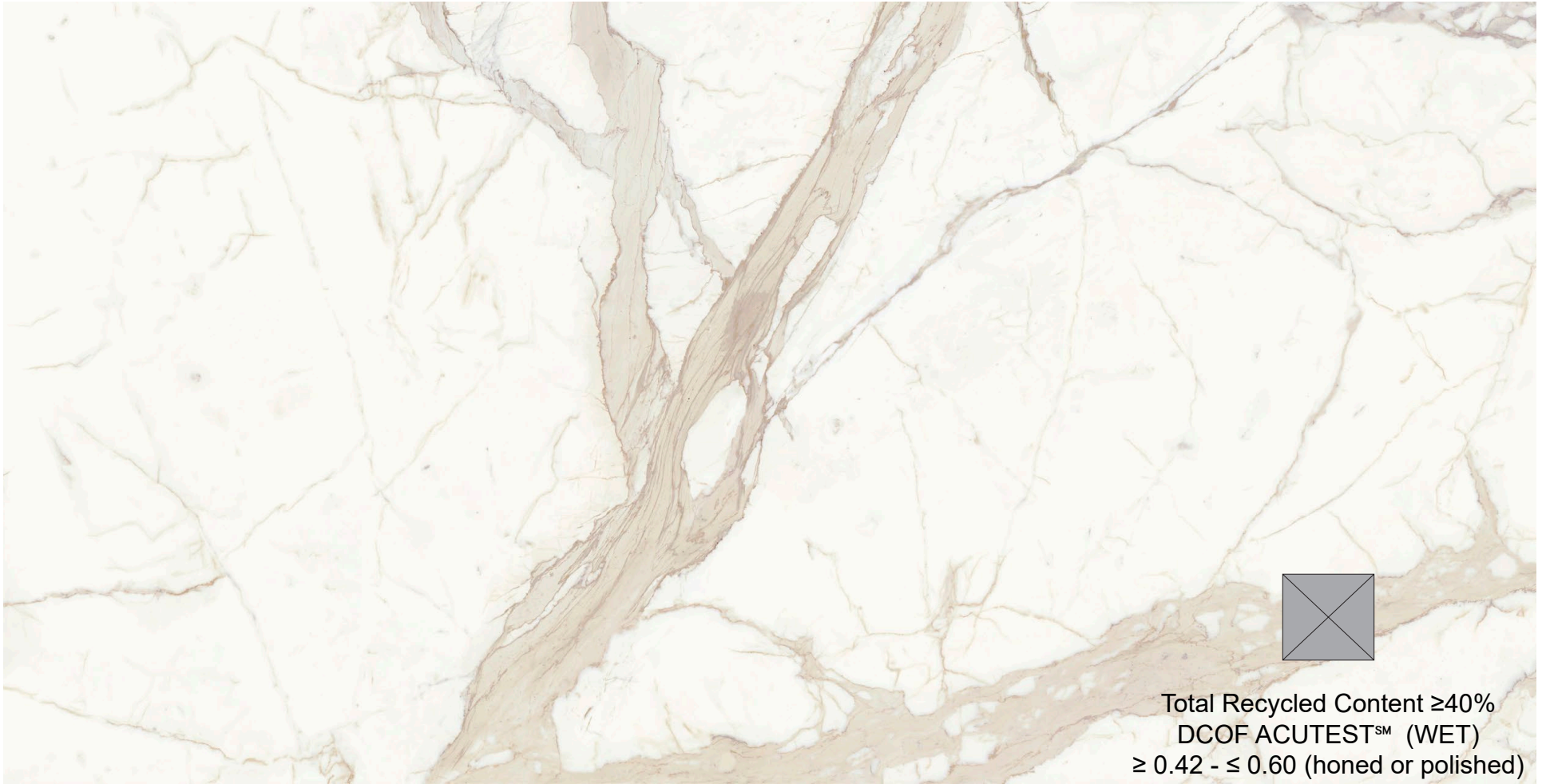


<u>SIZE</u>	<u>THICKNESS</u>	<u>FINISH</u>
120"x60"	0.48"	honed or polished

Our products are the result of the bond between earth and fire. The continuity of veins between slabs is subject to tolerance typical of natural materials

Snow

When preparing the order, the surfaces are selected randomly, therefore the continuity of veins is not guaranteed



Total Recycled Content $\geq 40\%$
DCOF ACUTESTSM (WET)
 ≥ 0.42 - ≤ 0.60 (honed or polished)

<u>SIZE</u>	<u>THICKNESS</u>	<u>FINISH</u>
120"x60"	0.48"	honed or polished

Our products are the result of the bond between earth and fire. The continuity of veins between slabs is subject to tolerance typical of natural materials

Summit

When preparing the order, the surfaces are selected randomly, therefore the continuity of veins is not guaranteed



Total Recycled Content $\geq 40\%$
DCOF ACUTESTSM (WET)
 $\geq 0.42 - \leq 0.60$ (polished)

<u>SIZE</u>	<u>THICKNESS</u>	<u>FINISH</u>
120"x60"	0.48"	polished

Our products are the result of the bond between earth and fire. The continuity of veins between slabs is subject to tolerance typical of natural materials

Wolf Grey

When preparing the order, the surfaces are selected randomly, therefore the continuity of veins is not guaranteed



<u>SIZE</u>	<u>THICKNESS</u>	<u>FINISH</u>
120"x60"	0.48"	honed

Our products are the result of the bond between earth and fire. The continuity of veins between slabs is subject to tolerance typical of natural materials

Concrete Nero Honed

When preparing the order, the surfaces are selected randomly, therefore the continuity of veins is not guaranteed



<u>SIZE</u>	<u>THICKNESS</u>	<u>FINISH</u>
127"x64"	0.48"	Natural

Our products are the result of the bond between earth and fire. The continuity of veins between slabs is subject to tolerance typical of natural materials

Create a custom table or cabinet with SmartStone®

Our expert craftsmen are committed to quality and will build a table to meet your needs.

Specify the design, choose SmartStone®, finishes and dimensions.

Then, choose to add hidden or exposed Induction Ranges, Frost Tops, or a combination.

